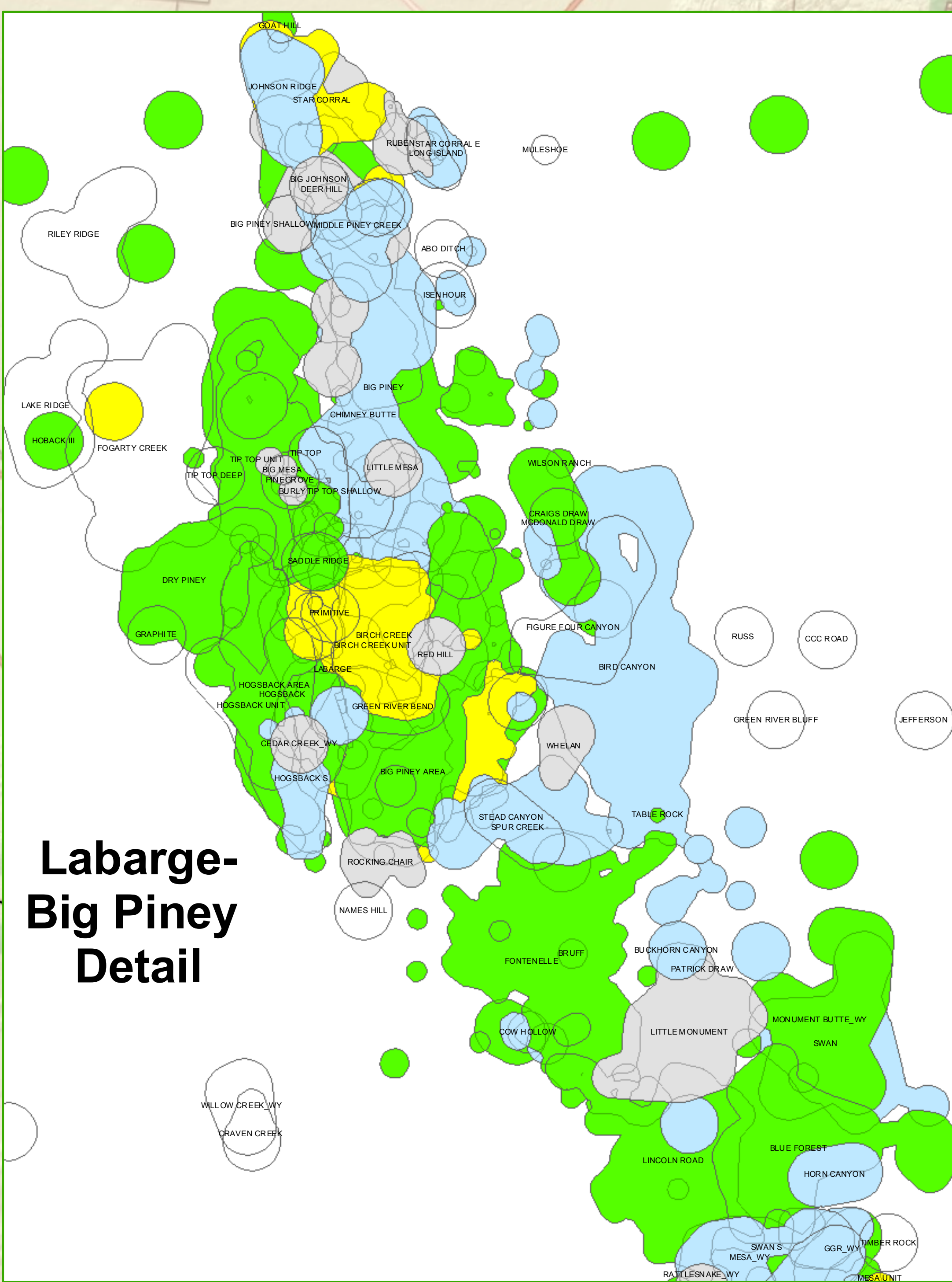


Greater Green River Basin Oil & Gas Fields By 2001 Liquids Reserve Class

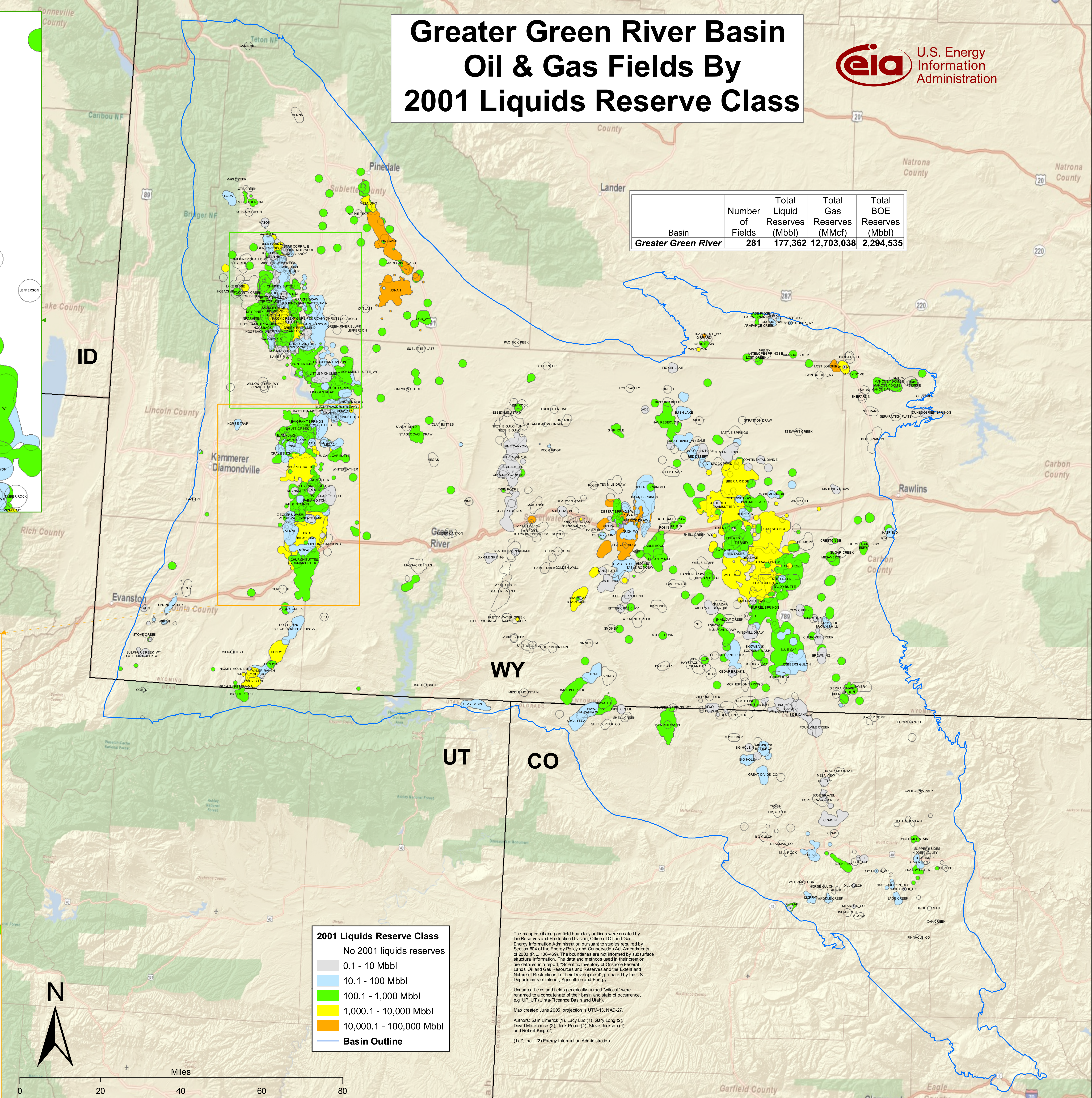
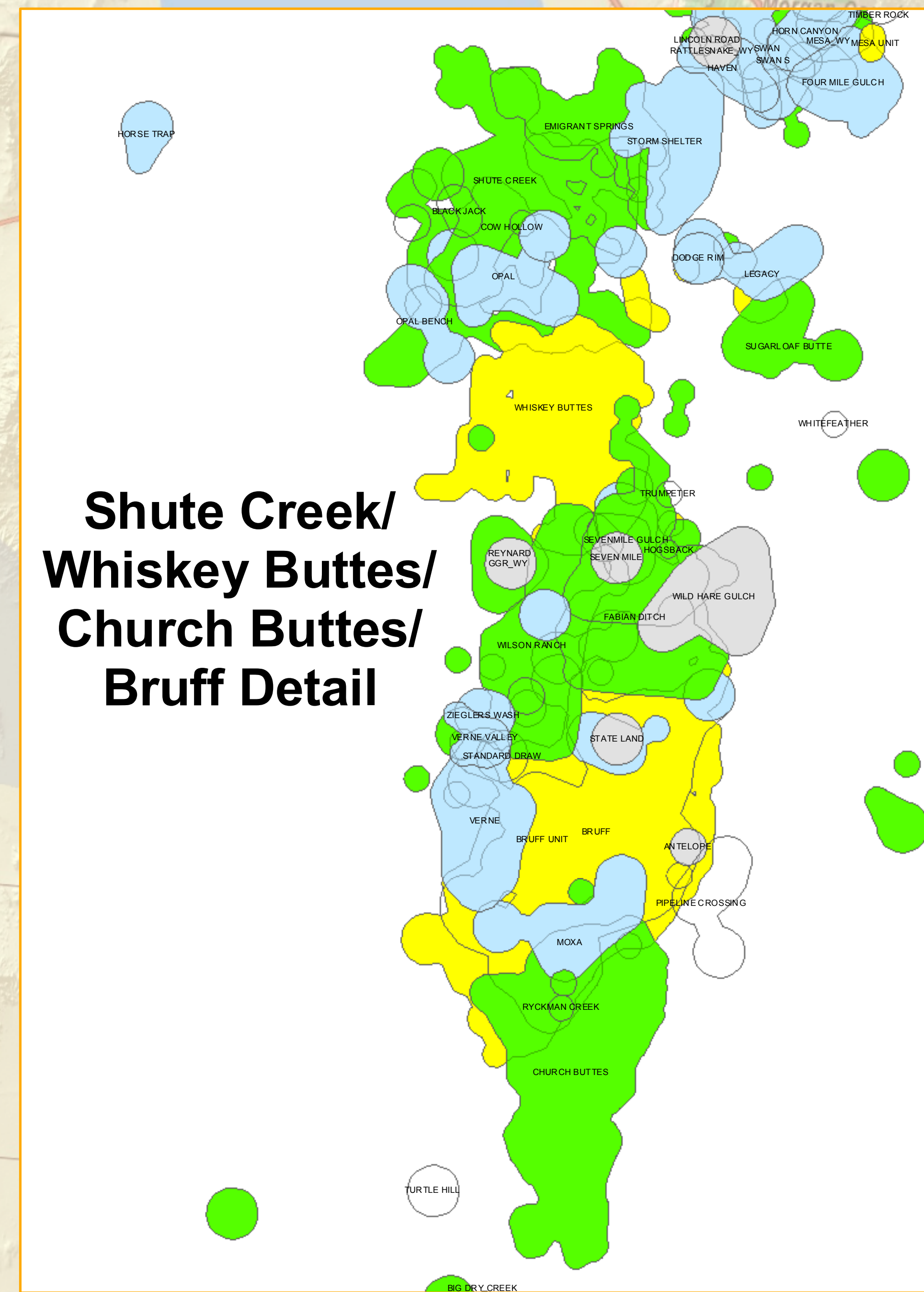


Basin	Number of Fields	Total Liquid Reserves (Mbbbl)	Total Gas Reserves (MMcf)	Total BOE Reserves (Mbbbl)
Greater Green River	281	177,362	12,703,038	2,294,535

**Labarge-
Big Piney
Detail**



**Shute Creek/
Whiskey Buttes/
Church Buttes/
Bruff Detail**



2001 Liquids Reserve Class

- No 2001 liquids reserves
- 0.1 - 10 Mbbbl
- 10.1 - 100 Mbbbl
- 100.1 - 1,000 Mbbbl
- 1,000.1 - 10,000 Mbbbl
- 10,000.1 - 100,000 Mbbbl
- Basin Outline

The mapped oil and gas field boundary outlines were created by the Reserves and Production Division, Office of Oil and Gas, Energy Information Administration pursuant to studies required by Section 604 of the Energy Policy and Conservation Act Amendments of 2000 (P.L. 106-469). The boundaries are not informed by subsurface structural information. The data and methods used in their creation are detailed in a report, "Scientific Inventory of Colorado Federal Lands Oil and Gas Resources and Reserves and the Extent and Nature of Restrictions to Their Development," prepared by the US Departments of Interior, Agriculture and Energy.

Unnamed fields and fields generically named "wildcat" were renamed to a concatenate of their basin and state of occurrence, e.g. UP_UT (Utah-Proseance Basin and Utah).

Map created June 2005; projection is UTM-13, NAD-27.

Authors: Sam Limerick (1), Lucy Luo (1), Gary Long (2), David Monrohouse (2), Jack Perin (1), Steve Jackson (1) and Robert King (2)

(1) Z. Inc. (2) Energy Information Administration



Miles
0 20 40 60 80