

Figure 8. U.S. Imports of Crude Oil and Petroleum Products, July 2008 to Present

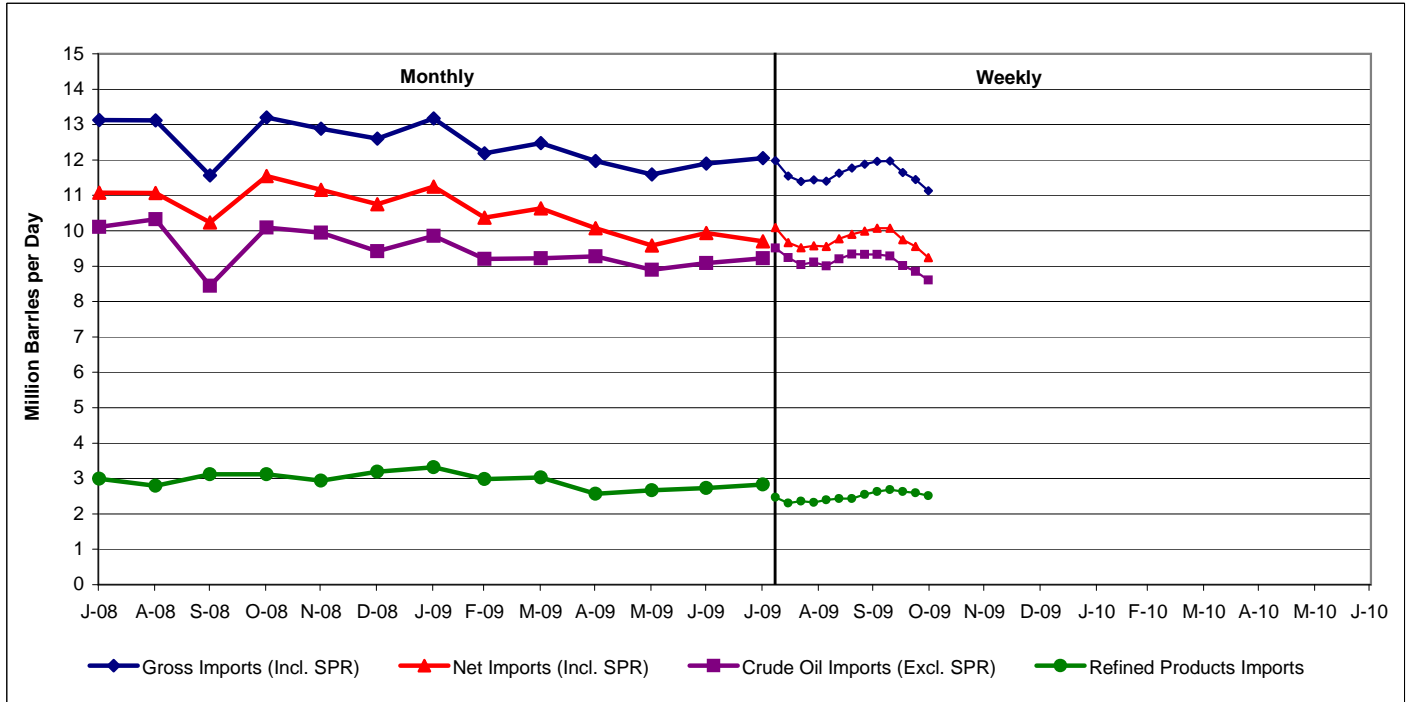


Table 8. U.S. Imports of Crude Oil and Petroleum Products, January 2008 to Present
(Thousand Barrels per Day)

Year/Product	Jan	Feb	Mar	Apr	May	Jun	Jul	Aug	Sep	Oct	Nov	Dec
2008												
Crude Oil (Excl. SPR)	10,065	9,636	9,601	9,962	9,570	9,974	10,106	10,324	8,447	10,086	9,944	9,419
SPR	0	0	0	0	0	0	0	0	0	0	0	0
Refined Products	3,486	3,024	2,962	3,352	3,238	3,380	2,992	2,793	3,115	3,116	2,937	3,188
Gross Imports (Incl. SPR)	13,568	12,660	12,598	13,331	12,902	13,398	13,124	13,118	11,562	13,202	12,881	12,607
Total Exports ¹	1,620	1,848	1,807	1,739	1,793	2,146	2,051	2,053	1,323	1,658	1,720	1,856
Net Imports (Incl. SPR)	11,949	10,812	10,791	11,593	11,109	11,252	11,073	11,064	10,239	11,545	11,160	10,751
2009												
Crude Oil (Excl. SPR)	9,852	9,205	9,219	9,276	8,898	9,082	9,227					
SPR	0	0	0	0	0	0	0					
Refined Products	3,321	2,986	3,033	2,567	2,665	2,730	2,826					
Gross Imports (Incl. SPR)	13,173	12,190	12,474	11,973	11,596	11,902	12,053					
Total Exports ¹	1,927	1,822	1,838	1,900	2,015	1,963	2,348					
Net Imports (Incl. SPR)	11,246	10,369	10,636	10,073	9,581	9,939	9,704					
Average for Four-Week Period Ending:												
2009												
	8/14	8/21	8/28	9/4	9/11	9/18	9/25	10/2	10/9	10/16	10/23	10/30
Crude Oil (Excl. SPR)	9,239	9,039	9,111	9,002	9,200	9,342	9,331	9,332	9,289	9,015	8,855	8,612
SPR	0	0	0	0	0	0	0	0	0	0	0	0
Refined Products	2,306	2,356	2,325	2,397	2,430	2,429	2,548	2,634	2,681	2,631	2,593	2,518
Gross Imports (Incl. SPR)	11,544	11,395	11,436	11,399	11,630	11,771	11,880	11,966	11,970	11,646	11,447	11,129
Total Exports ¹	1,882	1,870	1,858	1,846	1,859	1,872	1,885	1,898	1,896	1,895	1,893	1,891
Net Imports (Incl. SPR)	9,662	9,525	9,578	9,553	9,771	9,899	9,995	10,068	10,073	9,751	9,555	9,238

¹ Includes exports of crude oil and refined petroleum products. Crude oil exports are restricted to (1) crude oil derived from fields under the State waters of Alaska's Cook Inlet, (2) certain domestically produced crude oil destined for Canada, and (3) shipments to U.S. territories.

Notes: Some data are estimates. See Sources for clarification of estimated data. Data may not add to total due to independent rounding.

Source: See page 33.