

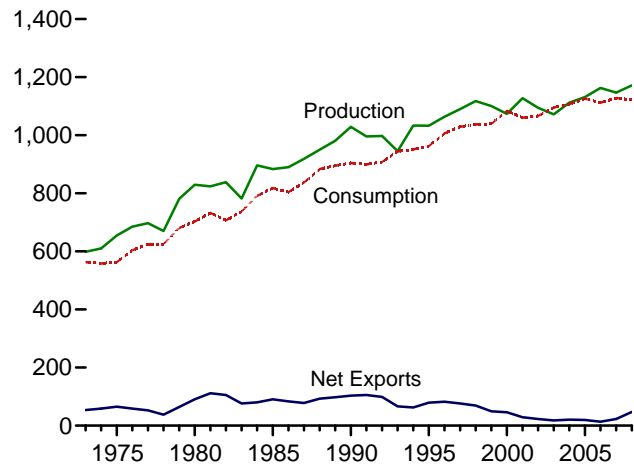
# Coal



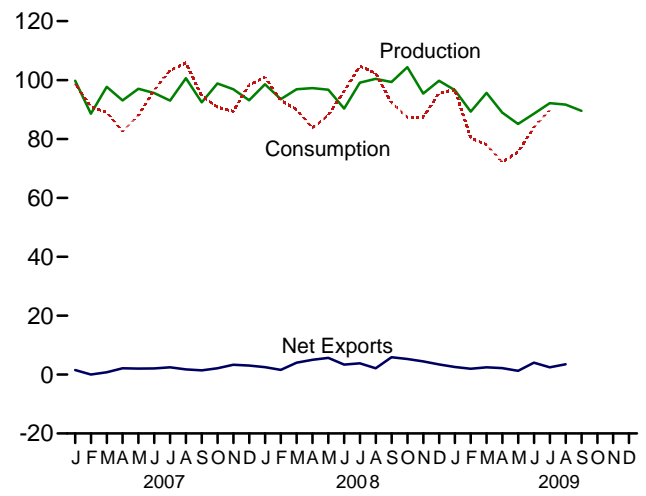
Coal yard, Curtis Bay, Maryland. Source: U.S. Department of Energy.

**Figure 6.1 Coal**  
(Million Short Tons)

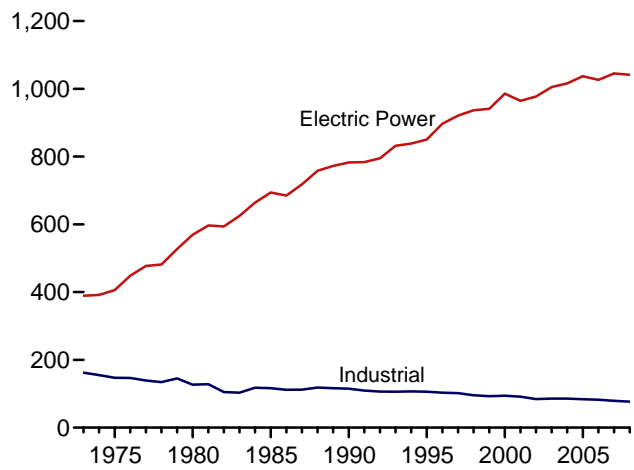
Overview, 1973-2008



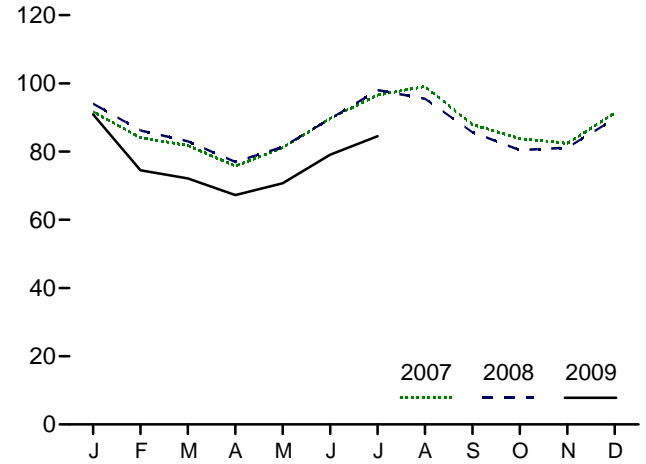
Overview, Monthly



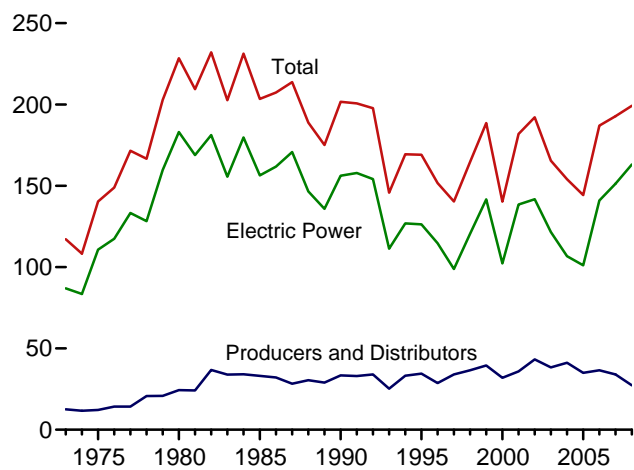
Consumption by Sector, 1973-2008



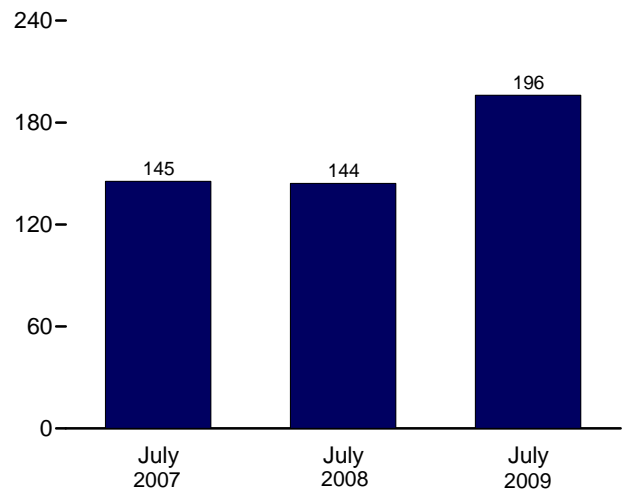
Electric Power Sector Consumption, Monthly



Stocks, End of Year, 1973-2008



Electric Power Sector Stocks, End of Month



Web Page: <http://www.eia.doe.gov/emeu/mer/coal.html>.  
Sources: Tables 6.1, 6.2, and 6.3.

**Table 6.1 Coal Overview**  
(Thousand Short Tons)

	Production <sup>a</sup>	Waste Coal Supplied <sup>b</sup>	Trade			Stock Change <sup>d</sup>	Losses and Unaccounted for <sup>e</sup>	Consumption
			Imports	Exports	Net Imports <sup>c</sup>			
<b>1973 Total</b> .....	598,568	NA	127	53,587	-53,460	( <sup>f</sup> )	<sup>f</sup> -17,476	562,584
<b>1975 Total</b> .....	654,641	NA	940	66,309	-65,369	32,154	-5,522	562,640
<b>1980 Total</b> .....	829,700	NA	1,194	91,742	-90,548	25,595	10,827	702,730
<b>1985 Total</b> .....	883,638	NA	1,952	92,680	-90,727	-27,934	2,796	818,049
<b>1990 Total</b> .....	1,029,076	3,339	2,699	105,804	-103,104	26,542	-1,730	904,498
<b>1995 Total</b> .....	1,032,974	8,561	9,473	88,547	-79,074	-275	632	962,104
<b>1996 Total</b> .....	1,063,856	8,778	8,115	90,473	-82,357	-17,456	1,411	1,006,321
<b>1997 Total</b> .....	1,089,932	8,096	7,487	83,545	-76,058	-11,253	3,678	1,029,544
<b>1998 Total</b> .....	1,117,535	8,690	8,724	78,048	-69,324	24,228	-4,430	1,037,103
<b>1999 Total</b> .....	1,100,431	8,683	9,089	58,476	-49,387	23,988	-2,906	1,038,647
<b>2000 Total</b> .....	1,073,612	9,089	12,513	58,489	-45,976	-48,309	938	1,084,095
<b>2001 Total</b> .....	1,127,689	10,085	19,787	48,666	-28,879	41,630	7,120	1,060,146
<b>2002 Total</b> .....	1,094,283	9,052	16,875	39,601	-22,726	10,215	4,040	1,066,355
<b>2003 Total</b> .....	1,071,753	10,016	25,044	43,014	-17,970	-26,659	-4,403	1,094,861
<b>2004 Total</b> .....	1,112,099	11,299	27,280	47,998	-20,718	-11,462	6,887	1,107,255
<b>2005 Total</b> .....	1,131,498	13,352	30,460	49,942	-19,482	-9,702	9,092	1,125,978
<b>2006 Total</b> .....	1,162,750	14,409	36,246	49,647	-13,401	42,642	8,824	1,112,292
<b>2007</b>								
January .....	99,784	976	2,844	4,368	-1,524	-5,583	6,081	98,738
February .....	88,580	1,038	2,656	2,685	-28	-4,877	3,497	90,970
March .....	97,677	1,250	3,285	4,086	-801	7,109	1,997	89,019
April .....	93,084	1,115	2,687	4,841	-2,154	7,902	1,602	82,540
May .....	97,038	1,039	2,691	4,747	-2,056	4,435	3,575	88,010
June .....	95,566	1,233	3,027	5,114	-2,087	-600	-1,243	96,555
July .....	93,003	1,250	3,373	5,812	-2,438	-9,987	-1,481	103,282
August .....	100,627	1,278	3,716	5,471	-1,756	-5,938	301	105,787
September .....	92,404	1,170	3,470	4,914	-1,445	1,129	-3,597	94,596
October .....	98,825	1,226	2,896	5,019	-2,123	8,357	-1,249	90,820
November .....	96,910	1,222	2,889	6,245	-3,355	5,100	366	89,311
December .....	93,138	1,279	2,812	5,861	-3,050	-1,237	-5,765	98,370
<b>Total</b> .....	<b>1,146,635</b>	<b>14,076</b>	<b>36,347</b>	<b>59,163</b>	<b>-22,816</b>	<b>5,812</b>	<b>4,085</b>	<b>1,127,998</b>
<b>2008</b>								
January .....	<sup>R</sup> 98,587	1,210	2,381	4,915	-2,535	-9,938	<sup>R</sup> 6,219	100,982
February .....	<sup>R</sup> 93,525	1,121	2,619	4,205	-1,586	-2,340	<sup>R</sup> 2,377	93,023
March .....	<sup>R</sup> 96,903	939	2,640	6,682	-4,041	5,714	<sup>R</sup> -1,906	89,993
April .....	<sup>R</sup> 97,287	1,028	2,985	7,979	-4,994	8,675	<sup>R</sup> 957	83,689
May .....	<sup>R</sup> 96,725	1,089	2,702	8,394	-5,692	4,158	<sup>R</sup> -192	88,156
June .....	<sup>R</sup> 90,319	1,134	3,295	6,695	-3,401	-6,499	<sup>R</sup> -1,700	96,251
July .....	<sup>R</sup> 99,132	1,193	2,569	6,404	-3,835	-11,176	<sup>R</sup> 2,947	104,720
August .....	<sup>R</sup> 100,428	1,165	3,144	5,264	-2,120	-4,393	<sup>R</sup> 1,560	102,306
September .....	<sup>R</sup> 99,351	1,176	2,772	8,653	-5,881	6,804	<sup>R</sup> -4,402	92,243
October .....	<sup>R</sup> 104,390	1,240	2,921	8,233	-5,312	11,122	<sup>R</sup> 1,790	87,406
November .....	<sup>R</sup> 95,405	1,206	2,988	7,460	-4,472	7,429	<sup>R</sup> -2,697	87,407
December .....	<sup>R</sup> 99,758	1,241	3,192	6,636	-3,444	-3,113	<sup>R</sup> 5,130	95,538
<b>Total</b> .....	<sup>R</sup> <b>1,171,809</b>	<b>13,743</b>	<b>34,208</b>	<b>81,519</b>	<b>-47,311</b>	<b>6,445</b>	<sup>R</sup> <b>10,082</b>	<b>1,121,714</b>
<b>2009</b>								
January .....	96,568	1,219	2,329	4,907	-2,578	-5,901	4,413	96,697
February .....	89,266	852	1,855	3,822	-1,968	3,107	4,661	80,383
March .....	95,610	959	2,141	4,605	-2,464	17,052	-965	78,019
April .....	88,944	920	1,303	3,513	-2,210	14,396	1,106	72,152
May .....	85,122	884	2,283	3,552	-1,269	11,064	-1,890	75,563
June .....	88,582	982	1,840	5,886	-4,045	-1,464	3,012	83,970
July .....	92,184	<sup>RF</sup> 1,258	2,018	4,477	-2,459	<sup>R</sup> -4,890	<sup>R</sup> 6,125	<sup>R</sup> 89,747
August .....	91,647	NA	<sup>R</sup> 1,568	<sup>R</sup> 5,056	<sup>R</sup> -3,488	NA	NA	NA
September .....	89,572	NA	NA	NA	NA	NA	NA	NA
<b>9-Month Total</b> .....	<b>817,494</b>	<b>NA</b>	<b>NA</b>	<b>NA</b>	<b>NA</b>	<b>NA</b>	<b>NA</b>	<b>NA</b>
<b>2008 9-Month Total</b> .....	<b>872,257</b>	<b>10,056</b>	<b>25,107</b>	<b>59,191</b>	<b>-34,084</b>	<b>-8,994</b>	<b>5,860</b>	<b>851,363</b>
<b>2007 9-Month Total</b> .....	<b>857,763</b>	<b>10,349</b>	<b>27,750</b>	<b>42,039</b>	<b>-14,289</b>	<b>-6,408</b>	<b>10,733</b>	<b>849,498</b>

<sup>a</sup> Beginning in 2001, includes a small amount of refuse recovery (coal recaptured from a refuse mine, and cleaned to reduce the concentration of noncombustible materials).

<sup>b</sup> Waste coal (including fine coal, coal obtained from a refuse bank or slurry dam, anthracite culm, bituminous gob, and lignite waste) consumed by the electric power and industrial sectors. Beginning in 1989, waste coal supplied is counted as a supply-side item to balance the same amount of waste coal included in "Consumption."

<sup>c</sup> Net imports equal imports minus exports. Minus sign indicates exports are greater than imports.

<sup>d</sup> A negative value indicates a decrease in stocks; a positive value indicates an increase.

<sup>e</sup> "Losses and Unaccounted for" is calculated as the sum of production, imports,

and waste coal supplied, minus exports, stock change, and consumption.

<sup>f</sup> In 1973, stock change is included in "Losses and Unaccounted for."

R=Revised. NA=Not available. F=Forecast.

Notes: • For methodology used to calculate production, consumption, and stocks, see Note 1, "Coal Production," Note 2, "Coal Consumption," and Note 3, "Coal Stocks," at end of section. • Data values preceded by "F" are derived from the Energy Information Administration's Short-Term Integrated Forecasting System.

See Note 4, "Coal Forecast Values," at end of section. • Totals may not equal sum of components due to independent rounding. • Geographic coverage is the 50 States and the District of Columbia.

Web Page: See <http://www.eia.doe.gov/emeu/mer/coal.html> for all available data beginning in 1973.

Sources: See end of section.

**Table 6.2 Coal Consumption by Sector**  
(Thousand Short Tons)

	End-Use Sectors										Electric Power Sector <sup>e,f</sup>	Total
	Residential	Commercial			Coke Plants	Industrial			Total	Transportation		
		CHP <sup>a</sup>	Other <sup>b</sup>	Total		CHP <sup>c</sup>	Non-CHP <sup>d</sup>	Total				
<b>1973 Total</b> .....	4,113	( <sup>g</sup> )	7,004	7,004	94,101	( <sup>h</sup> )	68,038	68,038	162,139	116	389,212	562,584
<b>1975 Total</b> .....	2,823	( <sup>g</sup> )	6,587	6,587	83,598	( <sup>h</sup> )	63,646	63,646	147,244	24	405,962	562,640
<b>1980 Total</b> .....	1,355	( <sup>g</sup> )	5,097	5,097	66,657	( <sup>h</sup> )	60,347	60,347	127,004	( <sup>h</sup> )	569,274	702,730
<b>1985 Total</b> .....	1,711	( <sup>g</sup> )	6,068	6,068	41,056	( <sup>h</sup> )	75,372	75,372	116,429	( <sup>h</sup> )	693,841	818,049
<b>1990 Total</b> .....	1,345	1,191	4,189	5,379	38,877	27,781	48,549	76,330	115,207	( <sup>h</sup> )	782,567	904,498
<b>1995 Total</b> .....	755	1,419	3,633	5,052	33,011	29,363	43,693	73,055	106,067	( <sup>h</sup> )	850,230	962,104
<b>1996 Total</b> .....	721	1,660	3,625	5,285	31,706	29,434	42,254	71,689	103,395	( <sup>h</sup> )	896,921	1,006,321
<b>1997 Total</b> .....	711	1,738	4,015	5,752	30,203	29,853	41,661	71,515	101,718	( <sup>h</sup> )	921,364	1,029,544
<b>1998 Total</b> .....	534	1,443	2,879	4,322	28,189	28,553	38,887	67,439	95,628	( <sup>h</sup> )	936,619	1,037,103
<b>1999 Total</b> .....	585	1,490	2,803	4,293	28,108	27,763	36,975	64,738	92,846	( <sup>h</sup> )	940,922	1,038,647
<b>2000 Total</b> .....	454	1,547	2,126	3,673	28,939	28,031	37,177	65,208	94,147	( <sup>h</sup> )	985,821	1,084,095
<b>2001 Total</b> .....	481	1,448	2,441	3,888	26,075	25,755	39,514	65,268	91,344	( <sup>h</sup> )	964,433	1,060,146
<b>2002 Total</b> .....	533	1,405	2,506	3,912	23,656	26,232	34,515	60,747	84,403	( <sup>h</sup> )	977,507	1,066,355
<b>2003 Total</b> .....	551	1,816	1,869	3,685	24,248	24,846	36,415	61,261	85,509	( <sup>h</sup> )	1,005,116	1,094,861
<b>2004 Total</b> .....	512	1,917	2,693	4,610	23,670	26,613	35,582	62,195	85,865	( <sup>h</sup> )	1,016,268	1,107,255
<b>2005 Total</b> .....	378	1,922	2,420	4,342	23,434	25,875	34,465	60,340	83,774	( <sup>h</sup> )	1,037,485	1,125,978
<b>2006 Total</b> .....	290	1,886	1,050	2,936	22,957	25,262	34,210	59,472	82,429	( <sup>h</sup> )	1,026,636	1,112,292
<b>2007</b> January .....	37	191	141	332	1,818	2,003	2,861	4,864	6,682	( <sup>h</sup> )	91,686	98,738
February .....	36	186	137	323	1,730	1,876	2,978	4,855	6,585	( <sup>h</sup> )	84,026	90,970
March .....	33	171	126	297	2,027	1,956	2,904	4,859	6,887	( <sup>h</sup> )	81,803	89,019
April .....	24	146	71	217	1,865	1,850	2,832	4,682	6,547	( <sup>h</sup> )	75,751	82,540
May .....	24	143	70	213	1,950	1,857	2,827	4,684	6,634	( <sup>h</sup> )	81,140	88,010
June .....	23	137	67	205	1,921	1,845	2,862	4,707	6,629	( <sup>h</sup> )	89,699	96,555
July .....	23	151	58	209	1,913	1,868	2,721	4,589	6,501	( <sup>h</sup> )	96,548	103,282
August .....	25	162	62	224	1,883	1,912	2,657	4,569	6,452	( <sup>h</sup> )	99,086	105,787
September .....	22	145	56	201	1,882	1,765	2,803	4,568	6,450	( <sup>h</sup> )	87,922	94,596
October .....	30	142	131	274	1,957	1,830	2,919	4,749	6,706	( <sup>h</sup> )	83,810	90,820
November .....	36	169	156	326	1,810	1,830	2,915	4,746	6,556	( <sup>h</sup> )	82,393	89,311
December .....	39	183	169	353	1,958	1,945	2,799	4,744	6,702	( <sup>h</sup> )	91,276	98,370
<b>Total</b> .....	<b>353</b>	<b>1,927</b>	<b>1,247</b>	<b>3,173</b>	<b>22,715</b>	<b>22,537</b>	<b>34,078</b>	<b>56,615</b>	<b>79,331</b>	( <sup>h</sup> )	<b>1,045,141</b>	<b>1,127,998</b>
<b>2008</b> January .....	38	196	150	346	1,834	2,009	2,703	4,712	6,546	( <sup>h</sup> )	94,052	100,982
February .....	36	184	140	324	1,792	1,966	2,706	4,672	6,464	( <sup>h</sup> )	86,199	93,023
March .....	37	188	143	331	1,910	2,000	2,688	4,688	6,598	( <sup>h</sup> )	83,027	89,993
April .....	24	156	58	214	1,864	1,924	2,703	4,627	6,490	( <sup>h</sup> )	76,962	83,689
May .....	24	156	58	214	1,911	1,978	2,643	4,621	6,532	( <sup>h</sup> )	81,386	88,156
June .....	27	176	66	242	1,805	1,915	2,697	4,612	6,417	( <sup>h</sup> )	89,565	96,251
July .....	25	178	44	223	1,915	2,041	2,501	4,542	6,457	( <sup>h</sup> )	98,015	104,720
August .....	24	174	43	217	2,034	1,982	2,551	4,533	6,567	( <sup>h</sup> )	95,498	102,306
September .....	23	166	41	207	1,818	1,965	2,536	4,501	6,319	( <sup>h</sup> )	85,694	92,243
October .....	28	162	92	253	2,208	1,950	2,525	4,475	6,883	( <sup>h</sup> )	80,442	87,406
November .....	31	176	100	275	1,626	1,882	2,467	4,349	5,974	( <sup>h</sup> )	81,127	87,407
December .....	35	198	112	311	1,353	1,955	2,251	4,205	5,558	( <sup>h</sup> )	89,635	95,538
<b>Total</b> .....	<b>351</b>	<b>2,109</b>	<b>1,047</b>	<b>3,155</b>	<b>22,070</b>	<b>23,566</b>	<b>30,970</b>	<b>54,536</b>	<b>76,606</b>	( <sup>h</sup> )	<b>1,041,603</b>	<b>1,121,714</b>
<b>2009</b> January .....	39	202	152	354	1,390	1,909	2,117	4,027	5,417	( <sup>h</sup> )	90,887	96,697
February .....	34	176	133	309	1,449	1,769	2,314	4,083	5,532	( <sup>h</sup> )	74,507	80,383
March .....	33	170	128	298	1,559	1,849	2,140	3,989	5,548	( <sup>h</sup> )	72,140	78,019
April .....	22	135	67	202	1,150	1,611	1,926	3,537	4,687	( <sup>h</sup> )	67,240	72,152
May .....	21	126	63	189	1,118	1,606	1,926	3,532	4,650	( <sup>h</sup> )	70,704	75,563
June .....	23	138	69	207	1,134	1,672	1,846	3,518	4,651	( <sup>h</sup> )	79,089	83,970
July .....	<sup>F</sup> 24	141	<sup>F</sup> 73	<sup>F</sup> 214	<sup>F</sup> 1,354	1,768	<sup>F</sup> 1,895	<sup>F</sup> 3,663	<sup>F</sup> 5,017	( <sup>h</sup> )	84,493	89,747
<b>7-Month Total</b> .....	<sup>E</sup> 197	<b>1,088</b>	<sup>E</sup> 685	<sup>E</sup> 1,773	<sup>E</sup> 9,154	<b>12,185</b>	<sup>E</sup> 14,164	<sup>E</sup> 26,348	<sup>E</sup> 35,502	( <sup>h</sup> )	<b>539,059</b>	<b>576,531</b>
<b>2008 7-Month Total</b> .....	<b>210</b>	<b>1,234</b>	<b>659</b>	<b>1,893</b>	<b>13,031</b>	<b>13,833</b>	<b>18,640</b>	<b>32,473</b>	<b>45,504</b>	( <sup>h</sup> )	<b>609,207</b>	<b>656,815</b>
<b>2007 7-Month Total</b> .....	<b>200</b>	<b>1,125</b>	<b>671</b>	<b>1,796</b>	<b>13,224</b>	<b>13,255</b>	<b>19,985</b>	<b>33,240</b>	<b>46,464</b>	( <sup>h</sup> )	<b>600,655</b>	<b>649,115</b>

<sup>a</sup> Commercial combined-heat-and-power (CHP) and a small number of commercial electricity-only plants, such as those at hospitals and universities. See Note, "Classification of Power Plants Into Energy-Use Sectors," at end of Section 7.

<sup>b</sup> All commercial sector fuel use other than that in "Commercial CHP."  
<sup>c</sup> Industrial combined-heat-and-power (CHP) and a small number of industrial electricity-only plants. See Note, "Classification of Power Plants Into Energy-Use Sectors," at end of Section 7.

<sup>d</sup> All industrial sector fuel use other than that in "Coke Plants" and "Industrial CHP."

<sup>e</sup> The electric power sector comprises electricity-only and combined-heat-and-power (CHP) plants within the NAICS 22 category whose primary business is to sell electricity, or electricity and heat, to the public.

<sup>f</sup> Through 1988, data are for consumption at electric utilities only. Beginning in 1989, data also include consumption at independent power producers.

<sup>g</sup> Included in "Commercial Other."

<sup>h</sup> Included in "Industrial Non-CHP."

E=Estimate. F=Forecast.

Notes: • CHP monthly values are from Table 7.4c; electric power sector monthly values are from Table 7.4b; all other monthly values are estimates derived from collected quarterly and annual data. See Note 2, "Coal Consumption," at end of section. • Data values preceded by "F" are derived from the Energy Information Administration's Short-Term Integrated Forecasting System. See Note 4, "Coal Forecast Values," at end of section. • Totals may not equal sum of components due to independent rounding. • Geographic coverage is the 50 States and the District of Columbia.

Web Page: See <http://www.eia.doe.gov/emeu/mer/coal.html> for all available data beginning in 1973.

Sources: See end of section.

**Table 6.3 Coal Stocks by Sector**  
(Thousand Short Tons)

	Producers and Distributors	End-Use Sectors					Electric Power Sector <sup>b,c</sup>	Total
		Residential and Commercial	Industrial			Total		
			Coke Plants	Other <sup>a</sup>	Total			
<b>1973 Year</b> .....	12,530	290	6,998	10,370	17,368	17,658	86,967	117,155
<b>1975 Year</b> .....	12,108	233	8,797	8,529	17,326	17,559	110,724	140,391
<b>1980 Year</b> .....	24,379	NA	9,067	11,951	21,018	21,018	183,010	228,407
<b>1985 Year</b> .....	33,133	NA	3,420	10,438	13,857	13,857	156,376	203,367
<b>1990 Year</b> .....	33,418	NA	3,329	8,716	12,044	12,044	156,166	201,629
<b>1995 Year</b> .....	34,444	NA	2,632	5,702	8,334	8,334	126,304	169,083
<b>1996 Year</b> .....	28,648	NA	2,667	5,688	8,355	8,355	114,623	151,627
<b>1997 Year</b> .....	33,973	NA	1,978	5,597	7,576	7,576	98,826	140,374
<b>1998 Year</b> .....	36,530	NA	2,026	5,545	7,571	7,571	120,501	164,602
<b>1999 Year</b> .....	39,475	NA	1,943	5,569	7,511	7,511	<sup>c</sup> 141,604	188,590
<b>2000 Year</b> .....	31,905	NA	1,494	4,587	6,081	6,081	102,296	140,282
<b>2001 Year</b> .....	35,900	NA	1,510	6,006	7,516	7,516	138,496	181,912
<b>2002 Year</b> .....	43,257	NA	1,364	5,792	7,156	7,156	141,714	192,127
<b>2003 Year</b> .....	38,277	NA	905	4,718	5,623	5,623	121,567	165,468
<b>2004 Year</b> .....	41,151	NA	1,344	4,842	6,186	6,186	106,669	154,006
<b>2005 Year</b> .....	34,971	NA	2,615	5,582	8,196	8,196	101,137	144,304
<b>2006 Year</b> .....	36,548	NA	2,928	6,506	9,434	9,434	140,964	186,946
<b>2007</b>								
January .....	35,986	NA	2,745	6,256	9,001	9,001	136,377	181,363
February .....	34,450	NA	2,561	6,006	8,568	8,568	133,468	176,486
March .....	34,007	NA	2,444	5,756	8,200	8,200	141,389	183,595
April .....	33,695	NA	2,417	5,728	8,145	8,145	149,657	191,498
May .....	33,107	NA	2,391	5,700	8,091	8,091	154,735	195,933
June .....	32,484	NA	2,364	5,672	8,037	8,037	154,812	195,333
July .....	31,967	NA	2,211	5,719	7,929	7,929	145,450	185,346
August .....	30,885	NA	2,091	5,765	7,856	7,856	140,668	179,409
September .....	30,090	NA	1,972	5,811	7,783	7,783	142,666	180,538
October .....	31,112	NA	1,960	5,748	7,708	7,708	150,075	188,895
November .....	32,069	NA	1,948	5,686	7,634	7,634	154,292	193,995
December .....	33,977	NA	1,936	5,624	7,560	7,560	151,221	192,758
<b>2008</b>								
January .....	28,258	F 463	1,778	5,355	7,133	7,596	146,966	182,820
February .....	30,009	F 456	1,620	5,087	6,707	7,162	143,309	180,480
March .....	32,464	448	1,462	4,818	6,280	6,728	147,002	186,194
April .....	33,569	458	1,560	4,873	6,433	6,891	154,409	194,869
May .....	32,047	468	1,658	4,928	6,586	7,055	159,926	199,027
June .....	31,395	478	1,756	4,983	6,740	7,218	153,915	192,528
July .....	29,744	490	1,828	5,058	6,886	7,376	144,231	181,352
August .....	28,019	502	1,899	5,133	7,033	7,535	141,405	176,959
September .....	30,235	514	1,971	5,208	7,179	7,693	145,835	183,763
October .....	29,478	508	2,091	5,475	7,565	8,074	157,334	194,886
November .....	28,206	503	2,211	5,741	7,952	8,455	165,654	202,315
December .....	27,311	498	2,331	6,007	8,338	8,836	163,056	199,202
<b>2009</b>								
January .....	26,404	491	2,260	5,787	8,048	8,539	158,358	193,301
February .....	25,366	485	2,190	5,568	7,758	8,243	162,799	196,408
March .....	28,875	478	2,119	5,349	7,468	7,946	176,639	213,460
April .....	31,494	480	2,000	5,264	7,263	7,744	188,618	227,856
May .....	33,406	483	1,880	5,179	7,058	7,541	197,972	238,919
June .....	31,902	485	1,760	5,093	6,853	7,339	198,215	237,455
July .....	F 28,955	F 502	F 1,813	F 5,244	F 7,056	F 7,559	196,052	232,566

<sup>a</sup> Through 1977, data are for stocks held by the manufacturing and transportation sectors. Beginning in 1978, data are for stocks held at manufacturing plants only.

<sup>b</sup> The electric power sector comprises electricity-only and combined-heat-and-power (CHP) plants within the NAICS 22 category whose primary business is to sell electricity, or electricity and heat, to the public.

<sup>c</sup> Through 1998, data are for stocks at electric utilities only. Beginning in 1999, data also include stocks at independent power producers.

NA=Not available. F=Forecast.

Notes: • Stocks are at end of period. • Electric power sector monthly values

are from Table 7.5; producers and distributors monthly values are estimates derived from collected annual data; all other monthly values are estimates derived from collected quarterly values. • Data values preceded by "F" are derived from the Energy Information Administration's Short-Term Integrated Forecasting System. See Note 4, "Coal Forecast Values," at end of section. • Totals may not equal sum of components due to independent rounding. • Geographic coverage is the 50 States and the District of Columbia.

Web Page: See <http://www.eia.doe.gov/emeu/mer/coal.html> for all available data beginning in 1973.

Sources: See end of section.

## Coal

**Note 1. Coal Production.** Preliminary monthly estimates of national coal production are the sum of weekly estimates developed by the Energy Information Administration (EIA) and published in the *Weekly Coal Production* report. When a week extends into a new month, production is allocated on a daily basis and added to the appropriate month. Weekly estimates are based on Association of American Railroads (AAR) data showing the number of railcars loaded with coal during the week by Class I and certain other railroads.

Prior to 2002, the weekly coal production model converted AAR data into short tons of coal by using the average number of short tons of coal per railcar loaded reported in the “Quarterly Freight Commodity Statistics” from the Surface Transportation Board. If an average coal tonnage per railcar loaded was not available for a specific railroad, the national average was used. To derive the estimate of total weekly production, the total rail tonnage for the week was divided by the ratio of quarterly production shipped by rail and total quarterly production. Data for the corresponding quarter of previous years were used to derive this ratio. This method ensured that the seasonal variations were preserved in the production estimates.

Beginning in 2002, the weekly coal production model uses statistical autoregressive methods to estimate national coal production as a function of railcar loadings of coal, and heating degree-days and cooling degree-days. On Thursday of each week, EIA receives from the AAR data for the previous week. The latest weekly national data for heating degree-days and cooling degree-days are obtained from the National Oceanic and Atmospheric Administration’s Climate Prediction Center. The weekly coal model is run and a national level coal production estimate is obtained. The weekly coal model is refit every quarter after preliminary coal data are available.

When preliminary quarterly data become available, the monthly and weekly estimates are adjusted to conform to the quarterly figures. The adjustment procedure uses State-level production data and is explained in EIA’s *Quarterly Coal Report*. Initial estimates of annual production published in January of the following year are based on preliminary production data covering the first nine months (three quarters) and weekly/monthly estimates for the fourth quarter. The fourth quarter estimates may or may not be revised when preliminary data become available in March of the following year, depending on the magnitude of the difference between the estimates and the preliminary data. In any event, all quarterly, monthly, and weekly production figures are adjusted to conform to the final annual production data published in the *Monthly Energy Review* in the fall of the following year.

**Note 2. Coal Consumption.** Coal consumption data are reported by major end-use sector. Forecast data (designated by an “F”) are derived from forecasted values shown

in the Energy Information Administration (EIA) *Short-Term Energy Outlook* (DOE/EIA-0202) table titled “U.S. Coal Supply and Demand: Base Case.” The monthly estimates are based on the quarterly values, which are released in March, June, September, and December. The estimates are revised quarterly as collected data become available from the data sources. Sector-specific information follows:

**Residential and Commercial—Coal** consumption by the residential and commercial sectors is reported to EIA for the two sectors combined; EIA estimates the amount consumed by the sectors individually. To create the estimates, it is first assumed that an occupied coal-heated housing unit consumes fuel at the same Btu rate as an oil-heated housing unit. Then, for the years in which data are available on the number of occupied housing units by heating source (1973–1981 and subsequent odd-numbered years), residential consumption of coal is estimated by the following steps: a ratio is created of the number of occupied housing units heated by coal to the number of occupied housing units heated by oil; that ratio is then multiplied by the Btu quantity of oil consumed by the residential sector to derive an estimate of the Btu quantity of coal consumed by the residential sector; and, finally, the amount estimated as the residential sector consumption is subtracted from the residential and commercial sectors’ combined consumption to derive the commercial sector’s estimated consumption. The 2007 share is applied to 2008 and 2009, and the other missing years’ shares are interpolated.

**Industrial Coke Plants—**Prior to 1980, monthly coke plant consumption data were taken directly from reported data. For 1980–1987, coke plant consumption estimates were derived by proportioning reported quarterly data by using the ratios of monthly-to-quarterly consumption data in 1979, the last year in which monthly data were reported. Beginning in January 1988, monthly coke plant consumption estimates are derived from the reported quarterly data by using monthly ratios of raw steel production data from the American Iron and Steel Institute. The ratios are the monthly raw steel production from open hearth and basic oxygen process furnaces as a proportion of the quarterly production from those kinds of furnaces.

**Industrial Other—**Prior to 1978, monthly consumption data for the other industrial sector (all industrial users minus coke plants) were derived by using reported data to modify baseline consumption figures from the most recent Bureau of the Census Annual Survey of Manufactures or Census of Manufactures. For 1978 and 1979, monthly estimates were derived from data reported on Forms EIA-3 and EIA-6. For 1980–1987, monthly figures were estimated by proportioning quarterly data by using the ratios of monthly-to-quarterly consumption data in 1979, the last year in which monthly data were reported on Form EIA-3. Beginning in January 1988, monthly consumption for the other industrial sector is estimated from reported quarterly data by using ratios derived from industrial production indices published by the Board of Governors of the Federal Reserve System. Indices for six major industry

groups are used as the basis for calculating the ratios: food manufacturing, which is North American Industry Classification System (NAICS) code 333; paper manufacturing, NAICS 322; chemical manufacturing, NAICS 325; petroleum and coal products, NAICS 324; non-metallic mineral products manufacturing, NAICS 327; and primary metal manufacturing, NAICS 331. The monthly ratios are computed as the monthly sum of the weighted indices as a proportion of the quarterly sum of the weighted indices by using the 1977 proportion as the weights. Prior to 2008, quarterly consumption data for the other industrial sector were derived by adding beginning stocks at manufacturing plants to current receipts and subtracting ending stocks at manufacturing plants. In this calculation, current receipts are the greater of either reported receipts from manufacturing plants (Form EIA-3) or reported shipments to the other industrial sector (Form EIA-6), thereby ensuring that agriculture, forestry, fishing, and construction consumption data were included where appropriate. Beginning in 2008, quarterly consumption totals for other industrial coal include data for manufacturing and mining only. Over time, surveyed coal consumption data for agriculture, forestry, fishing, and construction dwindled to about 20,000 to 30,000 tons annually. Therefore, in 2008, EIA consolidated its programs by eliminating agriculture, forestry, fishing, and construction as surveyed sectors.

Electric Power Sector—Monthly consumption data for electric power plants are taken directly from reported data.

**Note 3. Coal Stocks.** Coal stocks data are reported by major end-use sector. Forecast data for the most recent months (designated by an “F”) are derived from forecasted values shown in the Energy Information Administration (EIA) *Short-Term Energy Outlook* (DOE/EIA-0202) table titled “U.S. Coal Supply and Demand: Base Case.” The monthly estimates are based on the quarterly values (released in March, June, September, and December) or annual values. The estimates are revised as collected data become available from the data sources. Sector-specific information follows.

Producers and Distributors—Prior to 1998, quarterly stocks at producers and distributors were taken directly from reported data. Monthly data were estimated by using one-third of the current quarterly change to indicate the monthly change in stocks. Beginning in 1998, end-of-year stocks are taken from reported data. Monthly stocks are estimated by a model.

Residential and Commercial—Prior to 1980, stock estimates for the residential and commercial sector were taken directly from reported data. For 1980–2007, stock estimates were not collected. Beginning in 2008, quarterly stocks data are collected on Form EIA-3 (data for “Commercial and Institutional Coal Users”).

Industrial Coke Plants—Prior to 1980, monthly stocks at coke plants were taken directly from reported data. Beginning in 1980, coke plant stocks are estimated by using

one-third of the current quarterly change to indicate the monthly change in stocks. Quarterly stocks are taken directly from data reported on Form EIA-5.

Industrial Other—Prior to 1978, stocks for the other industrial sector were derived by using reported data to modify baseline figures from a one-time Bureau of Mines survey of consumers. For 1978–1982, monthly estimates were derived by judgmentally proportioning reported quarterly data based on representative seasonal patterns of supply and demand. Beginning in 1983, other industrial coal stocks are estimated as indicated above for coke plants. Quarterly stocks are taken directly from data reported on Form EIA-3 and therefore include only manufacturing industries; data for agriculture, forestry, fishing, mining, and construction stocks are not available.

Electric Power Sector—Monthly stocks data at electric power plants are taken directly from reported data.

**Note 4. Coal Forecast Values.** Data values preceded by “F” in this section are forecast values. They are derived from EIA’s Short-Term Integrated Forecasting System (STIFS). The model is driven primarily by data and assumptions about key macroeconomic variables, the world oil price, and weather. The coal forecast relies on other variables as well, such as alternative fuel prices (natural gas and oil) and power generation by sources other than fossil fuels, including nuclear and hydroelectric power. Each month, EIA staff review the model output and make adjustments, if appropriate, based on their knowledge of developments in the coal industry.

The STIFS model results are published monthly in EIA’s *Short-Term Energy Outlook*, which is accessible on the Web at <http://www.eia.doe.gov/emeu/steo/pub/contents.html>.

**Note 5. Additional Coal Information.** EIA’s *Quarterly Coal Report* provides additional information about coal data and estimation procedures.

## Table 6.1 Sources

### Production

1973–September 1977: U.S. Department of the Interior, Bureau of Mines, *Minerals Yearbook* and *Minerals Industry Surveys*.

October 1977 forward: Energy Information Administration (EIA), *Weekly Coal Production*.

### Waste Coal Supplied

1989–1997: EIA, Form EIA-867, “Annual Nonutility Power Producer Report.”

1998–2000: EIA, Form EIA-860B, “Annual Electric Generator Report—Nonutility.”

2001–2003: EIA, Form EIA-906, “Power Plant Report,” and Form EIA-3, “Quarterly Coal Consumption and Quality Report—Manufacturing Plants.”

2004–2007: EIA, Form EIA-906, “Power Plant Report,” Form EIA-920, “Combined Heat and Power Plant Report,” and Form EIA-3, “Quarterly Coal Consumption and Quality Report—Manufacturing Plants.”

2008 and 2009: EIA, Form EIA-923, “Power Plant Operations Report,” and Form EIA-3, “Quarterly Coal Consumption and Quality Report, Manufacturing and Transformation/Processing Coal Plants and Commercial and Institutional Coal Users”; and, for forecast values, EIA, Short-Term Integrated Forecasting System.

### **Imports and Exports**

U.S. Department of Commerce, Bureau of the Census, Monthly Reports IM 145 (Imports) and EM 545 (Exports).

### **Stock Change**

Calculated from data in Table 6.3.

### **Losses and Unaccounted for**

Calculated as the sum of production, imports, and waste coal supplied, minus exports, stock change, and consumption.

### **Consumption**

Table 6.2.

## **Table 6.2 Sources**

### **Residential and Commercial Total**

Coal consumption by the residential and commercial sectors combined is reported to the Energy Information Administration (EIA). EIA estimates the sectors individually using the method described in Note 2, “Consumption,” at the end of Section 6. Data for the residential and commercial sectors combined are from:

1973–1976: U.S. Department of the Interior (DOI), Bureau of Mines (BOM), *Minerals Yearbook*.

January–September 1977: DOI, BOM, Form 6-1400, “Monthly Coal Report, Retail Dealers—Upper Lake Docks.”

October 1977–1979: EIA, Form EIA-2, “Monthly Coal Report, Retail Dealers—Upper Lake Docks.”

1980–1997: EIA, Form EIA-6, “Coal Distribution Report,” quarterly.

1998–2007: DOI, Mine Safety and Health Administration, Form 7000-2, “Quarterly Mine Employment and Coal Production.”

2008 and 2009: EIA, Form EIA-3, “Quarterly Coal Consumption and Quality Report, Manufacturing and Transformation/Processing Coal Plants and Commercial and Institutional Coal Users” (data for “Commercial and Institutional Coal Users”); and, for forecast values, EIA, Short-Term Integrated Forecasting System.

### **Commercial CHP**

Table 7.4c.

### **Commercial Other**

Calculated as “Commercial Total” minus “Commercial CHP.”

### **Industrial Coke Plants**

1973–September 1977: DOI, BOM, *Minerals Yearbook* and *Minerals Industry Surveys*.

October 1977–1980: EIA, Form EIA-5/5A, “Coke and Coal Chemicals—Monthly/Annual Supplement.”

1981–1984: EIA, Form EIA-5/5A, “Coke Plant Report—Quarterly/Annual Supplement.”

1985 forward: EIA, Form EIA-5, “Coke Plant Report—Quarterly”; and, for forecast values, EIA, Short-Term Integrated Forecasting System.

### **Other Industrial Total**

1973–September 1977: DOI, BOM, *Minerals Yearbook* and *Minerals Industry Surveys*.

October 1977–1979: EIA, Form EIA-3, “Monthly Coal Consumption Report—Manufacturing Plants.”

1980–1997: EIA, Form EIA-3, “Quarterly Coal Consumption Report—Manufacturing Plants,” and Form EIA-6, “Coal Distribution Report,” quarterly.

1998–2007: EIA, Form EIA-3, “Quarterly Coal Consumption Report—Manufacturing Plants,” Form EIA-6A, “Coal Distribution Report,” annual, and Form EIA-7A, “Coal Production Report,” annual.

2008 and 2009: EIA, Form EIA-3, “Quarterly Coal Consumption and Quality Report, Manufacturing and Transformation/Processing Coal Plants and Commercial and Institutional Coal Users,” and Form EIA-7A, “Coal Production Report,” annual; and, for forecast values, EIA, Short-Term Integrated Forecasting System.

### **Other Industrial CHP**

Table 7.4c.

### **Other Industrial Non-CHP**

Calculated as “Other Industrial Total” minus “Other Industrial CHP.”

### **Transportation**

1973–1976: DOI, BOM, *Minerals Yearbook*.

January–September 1977: DOI, BOM, Form 6-1400, “Monthly Coal Report, Retail Dealers—Upper Lake Docks.”

October–December 1977: EIA, Form EIA-6, “Coal Distribution Report,” quarterly.

### **Electric Power**

Table 7.4b.

## **Table 6.3 Sources**

### **Producers and Distributors**

1973–1979: U.S. Department of the Interior (DOI), Bureau of Mines (BOM), Form 6-1419Q, “Distribution of Bituminous Coal and Lignite Shipments.”

1980–1997: Energy Information Administration (EIA), Form EIA-6, “Coal Distribution Report,” quarterly.

1998–2007: EIA, Form EIA-6A, “Coal Distribution Report,” annual.

2008 and 2009: EIA, Form EIA-7A, “Coal Production Report,” annual, and Form EIA-8A, “Coal Stocks Report,” annual; and, for forecast values, EIA, Short-Term Integrated Forecasting System.

#### **Residential and Commercial**

1973–1976: DOI, BOM, *Minerals Yearbook*.

January–September 1977: DOI, BOM, Form 6-1400, “Monthly Coal Report, Retail Dealers—Upper Lake Docks.”

October 1977–1979: EIA, Form EIA-2, “Monthly Coal Report, Retail Dealers—Upper Lake Docks.”

2008 and 2009: EIA, Form EIA-3, “Quarterly Coal Consumption and Quality Report, Manufacturing and Transformation/Processing Coal Plants and Commercial and Institutional Coal Users” (data for “Commercial and Institutional Coal Users”); and, for forecast values, EIA, Short-Term Integrated Forecasting System.

#### **Industrial Coke Plants**

1973–September 1977: DOI, BOM, *Minerals Yearbook* and *Minerals Industry Surveys*.

October 1977–1980: EIA, Form EIA-5/5A, “Coke and Coal

Chemicals—Monthly/Annual.”

1981–1984: EIA, Form EIA 5/5A, “Coke Plant Report—Quarterly/Annual Supplement.”

1985 forward: EIA, Form EIA-5, “Coke Plant Report—Quarterly”; and, for forecast values, EIA, Short-Term Integrated Forecasting System.

#### **Industrial Other**

1973–September 1977: DOI, BOM, *Minerals Yearbook* and *Minerals Industry Surveys*.

October 1977–1979: EIA, Form EIA-3, “Monthly Coal Consumption Report—Manufacturing Plants.”

1998–2007: EIA, Form EIA-3, “Quarterly Coal Consumption Report—Manufacturing Plants.”

2008 and 2009: EIA, Form EIA-3, “Quarterly Coal Consumption and Quality Report, Manufacturing and Transformation/Processing Coal Plants and Commercial and Institutional Coal Users”; and, for forecast values, EIA, Short-Term Integrated Forecasting System.

#### **Electric Power**

Table 7.5.

