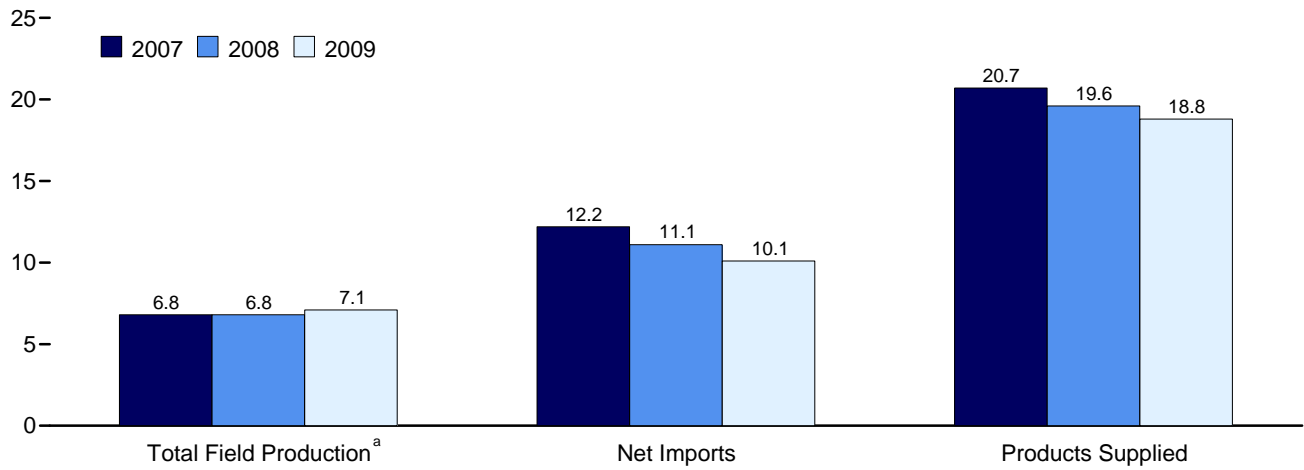
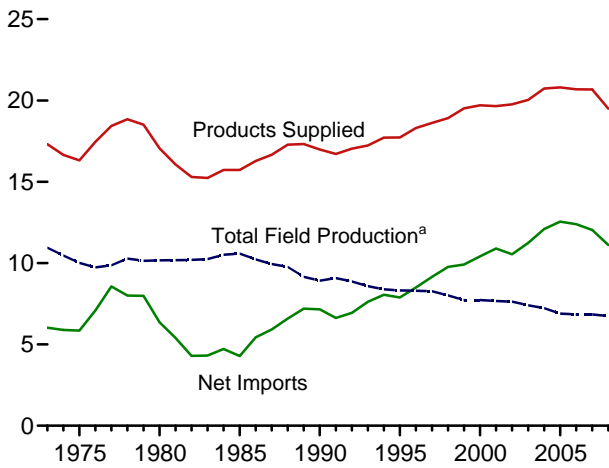


**Figure 3.1 Petroleum Overview**  
(Million Barrels per Day)

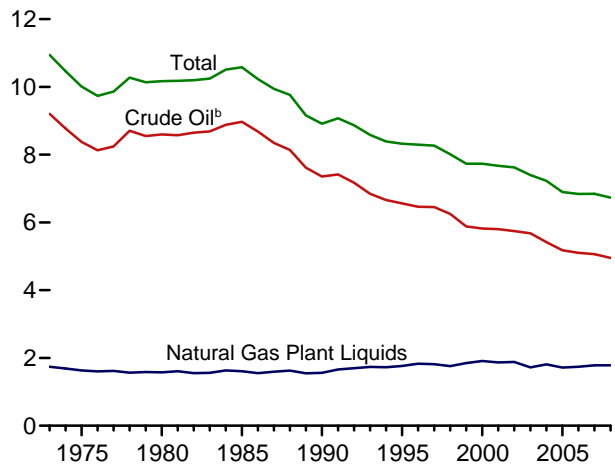
Overview, January-September



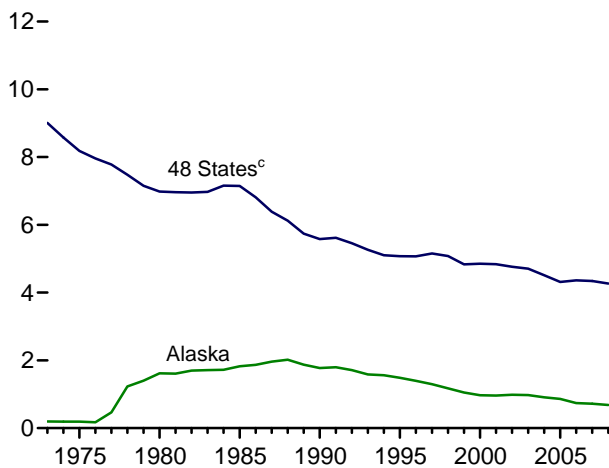
Overview, 1973-2008



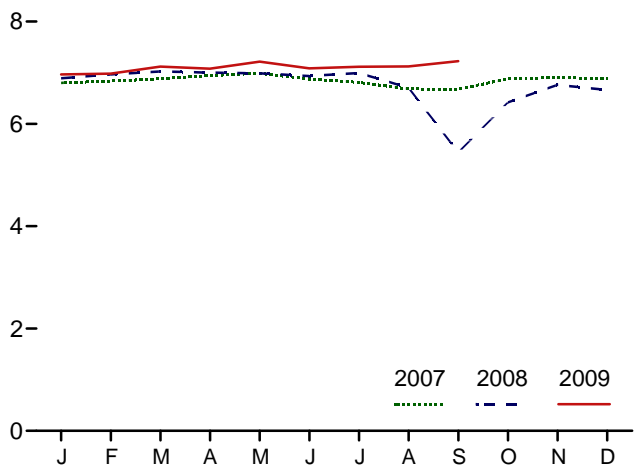
Total Field Production, 1973-2008



Crude Oil<sup>b</sup> Field Production, 1973-2008



Total Field Production<sup>a</sup>, Monthly



<sup>a</sup>Crude oil, including lease condensate, and natural gas plant liquids field production.

<sup>b</sup>Includes lease condensate.

<sup>c</sup>United States excluding Alaska and Hawaii.

Web Page: <http://www.eia.doe.gov/emeu/mer/petro.html>.

Source: Table 3.1.