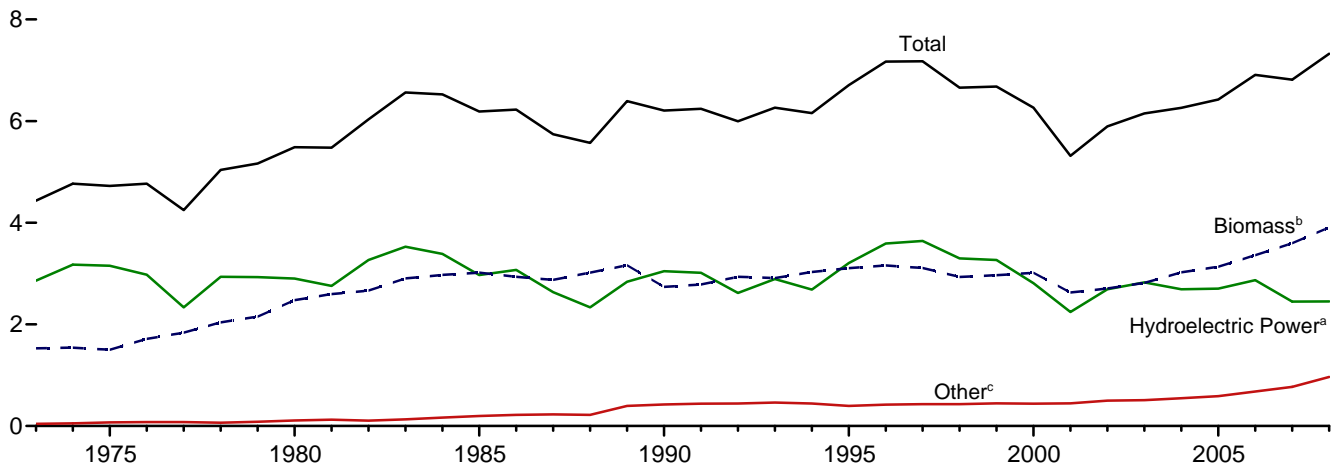
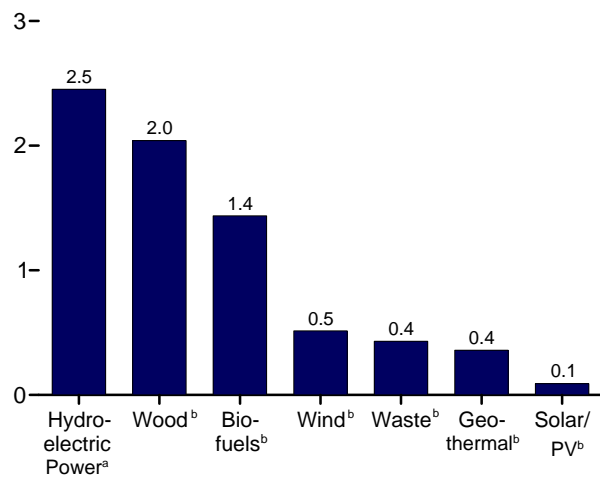


**Figure 10.1 Renewable Energy Consumption**  
(Quadrillion Btu)

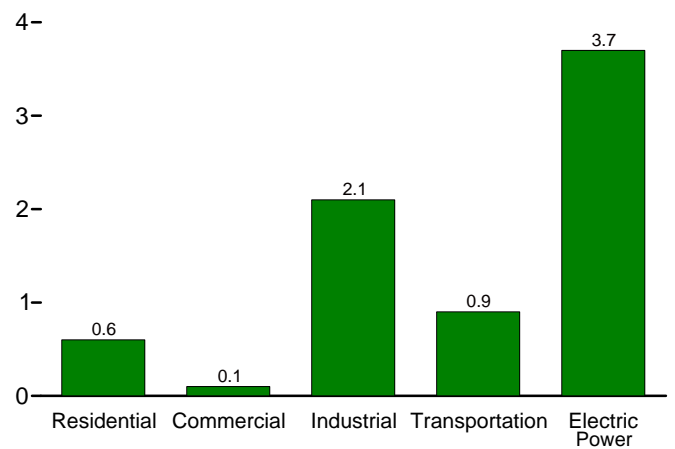
Total and Major Sources, 1973-2008



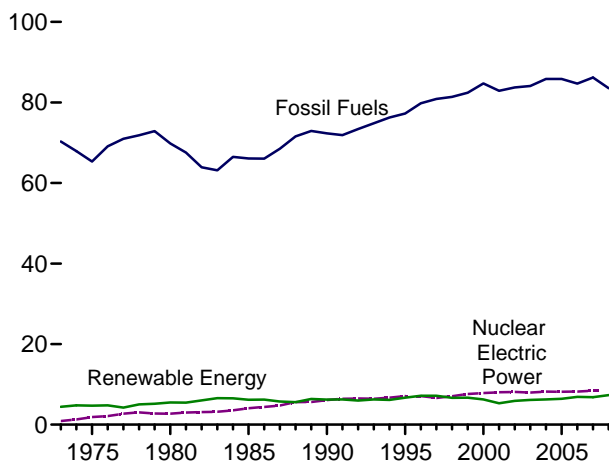
By Source, 2008



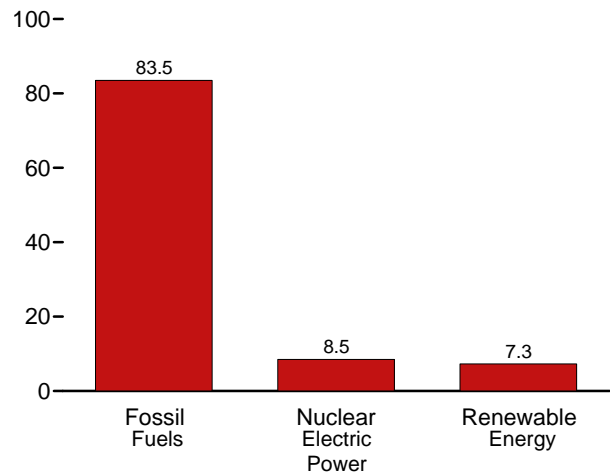
By Sector, 2008



Compared With Other Resources, 1973-2008



Compared With Other Resources, 2008



<sup>a</sup>Conventional hydroelectric power.

<sup>b</sup>See Table 10.1 for definition.

<sup>c</sup>Geothermal, solar/PV, and wind.

Web Page: <http://www.eia.doe.gov/emeu/mer/renew.html>.

Sources: Tables 1.3, 10.1, and 10.2a-c.