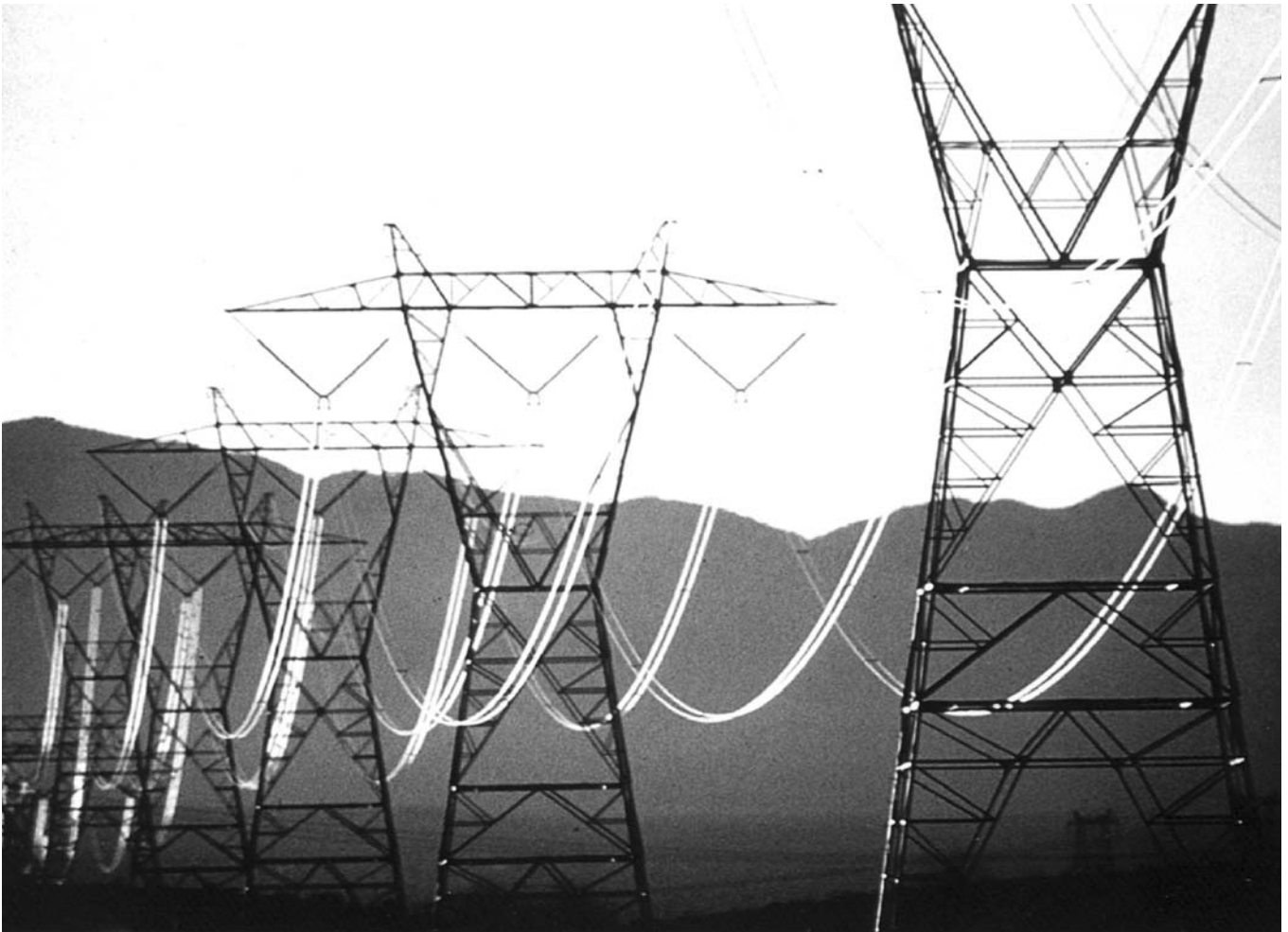


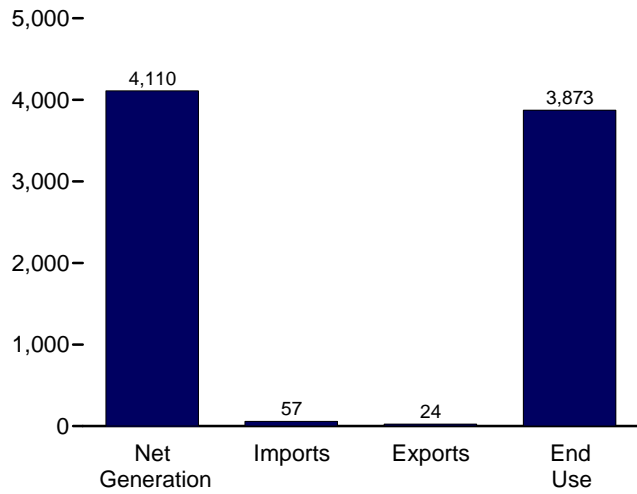
Electricity



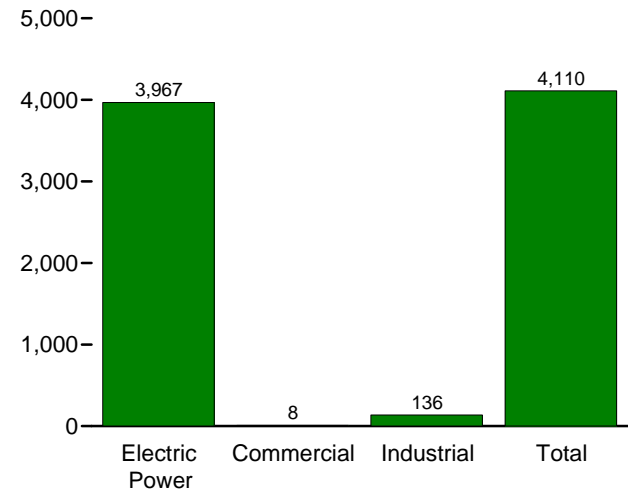
High-tension power lines and towers. Source: U.S. Department of Energy.

Figure 7.1 Electricity Overview
(Billion Kilowatthours)

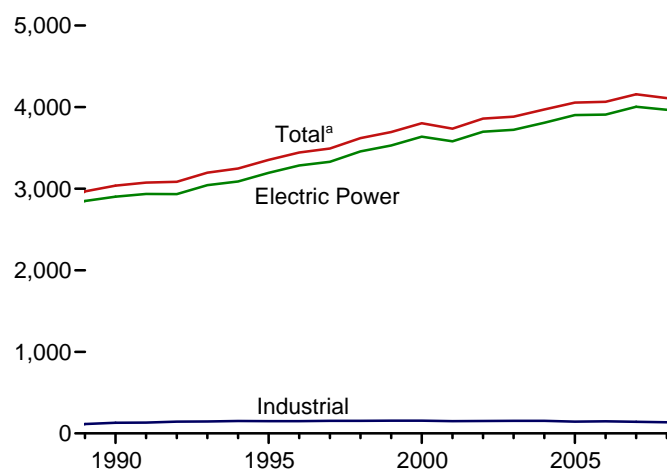
Overview, 2008



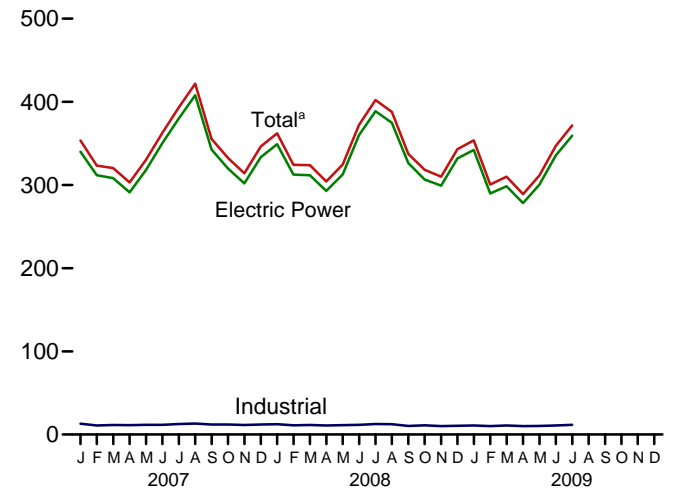
Net Generation, 2008



Net Generation by Sector, 1989-2008



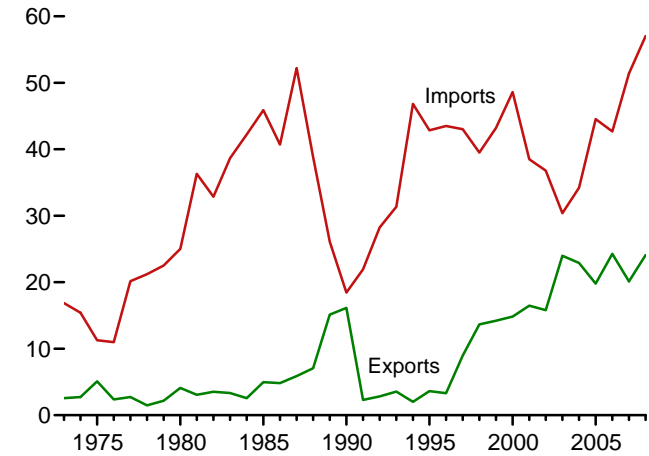
Net Generation by Sector, Monthly



End Use, 2008



Trade, 1973-2008



^aIncludes commercial sector.

^bElectricity retail sales to ultimate customers reported by electric utilities and other energy service providers.

^cSee "Direct Use" in Glossary.

Web Page: <http://www.eia.doe.gov/emeu/mer/elect.html>.
Source: Table 7.1.

Table 7.1 Electricity Overview
(Billion Kilowatthours)

	Net Generation				Trade			T&D Losses ^e and Unaccounted for ^f	End Use		
	Electric Power Sector ^a	Com- mercial Sector ^b	Indus- trial ^c	Total	Imports ^d	Exports ^d	Net Imports ^d		Retail Sales ^g	Direct Use ^h	Total
1973 Total	1,861	NA	3	1,864	17	3	14	165	1,713	NA	1,713
1975 Total	1,918	NA	3	1,921	11	5	6	180	1,747	NA	1,747
1980 Total	2,286	NA	3	2,290	25	4	21	216	2,094	NA	2,094
1985 Total	2,470	NA	3	2,473	46	5	41	190	2,324	NA	2,324
1990 Total	2,901	6	131	3,038	18	16	2	203	2,713	125	2,837
1995 Total	3,194	8	151	3,353	43	4	39	229	3,013	151	3,164
1996 Total	3,284	9	151	3,444	43	3	40	231	3,101	153	3,254
1997 Total	3,329	9	154	3,492	43	9	34	224	3,146	156	3,302
1998 Total	3,457	9	154	3,620	40	14	26	221	3,264	161	3,425
1999 Total	3,530	9	156	3,695	43	14	29	240	3,312	172	3,484
2000 Total	3,638	8	157	3,802	49	15	34	244	3,421	171	3,592
2001 Total	3,580	7	149	3,737	39	16	22	202	3,394	163	3,557
2002 Total	3,698	7	153	3,858	37	16	21	248	3,465	166	3,632
2003 Total	3,721	7	155	3,883	30	24	6	228	3,494	168	3,662
2004 Total	3,808	8	154	3,971	34	23	11	266	3,547	168	3,716
2005 Total	3,902	8	145	4,055	45	20	25	269	3,661	150	3,811
2006 Total	3,908	8	148	4,065	43	24	18	266	3,670	147	3,817
2007 January	340	1	13	354	3	2	2	26	315	^E 14	329
February	312	1	11	323	4	1	3	13	301	^E 12	313
March	308	1	11	320	4	2	2	18	292	^E 13	304
April	291	1	11	303	4	1	3	18	275	^E 12	288
May	318	1	12	330	5	1	3	28	293	^E 13	306
June	350	1	12	363	4	1	3	30	323	^E 13	336
July	380	1	13	393	6	2	4	30	353	^E 14	367
August	408	1	13	422	5	2	3	37	373	^E 15	388
September	343	1	12	355	4	2	1	6	338	^E 13	351
October	320	1	12	333	4	2	2	13	308	^E 13	321
November	302	1	12	314	4	2	3	18	286	^E 13	299
December	334	1	12	346	4	2	2	27	308	^E 13	321
Total	4,005	8	143	4,157	51	20	31	264	3,765	159	3,924
2008 January	349	1	12	362	5	2	3	26	325	^E 14	339
February	313	1	11	324	5	2	3	11	304	^E 12	317
March	312	1	12	324	5	3	2	20	293	^E 13	306
April	293	1	11	304	4	1	3	18	277	^E 12	289
May	313	1	11	325	5	3	2	27	287	^E 13	300
June	360	1	12	372	6	3	3	35	327	^E 13	340
July	389	1	13	402	6	2	4	33	359	^E 14	373
August	375	1	12	388	6	1	4	28	351	^E 14	365
September	326	1	10	337	5	2	3	7	322	^E 11	333
October	307	1	11	318	4	2	2	17	291	^E 12	303
November	299	1	10	310	3	2	1	23	277	^E 11	288
December	332	1	10	343	3	1	2	26	307	^E 12	319
Total	3,967	8	136	4,110	57	24	33	271	3,722	^E 151	3,873
2009 January	342	1	11	354	4	2	2	24	320	^E 12	332
February	290	1	10	301	4	2	2	7	285	^E 11	296
March	298	1	11	310	3	2	1	17	282	^E 12	294
April	278	1	10	289	3	1	2	16	264	^E 11	275
May	300	1	10	311	4	1	3	29	273	^E 12	285
June	336	1	11	347	5	2	3	35	303	^E 12	315
July	359	1	12	372	6	1	4	27	336	^E 13	349
7-Month Total	2,204	5	75	2,284	29	11	17	155	2,062	^E 84	2,146
2008 7-Month Total	2,328	5	81	2,414	36	15	21	170	2,174	^E 91	2,264
2007 7-Month Total	2,299	5	82	2,387	30	10	20	163	2,152	^E 92	2,244

^a Electricity-only and combined-heat-and-power (CHP) plants within the NAICS 22 category whose primary business is to sell electricity, or electricity and heat, to the public. Through 1988, data are for electric utilities only; beginning in 1989, data are for electric utilities and independent power producers.

^b Commercial combined-heat-and-power (CHP) and commercial electricity-only plants.

^c Industrial combined-heat-and-power (CHP) and industrial electricity-only plants. Through 1988, data are for industrial hydroelectric power only.

^d Electricity transmitted across U.S. borders. Net imports equal imports minus exports.

^e Transmission and distribution losses (electricity losses that occur between the point of generation and delivery to the customer). See Note 2, "Electrical System Energy Losses," at end of Section 2.

^f Data collection frame differences and nonsampling error.

^g Electricity retail sales to ultimate customers by electric utilities and, beginning in 1996, other energy service providers.

^h Use of electricity that is 1) self-generated, 2) produced by either the same entity that consumes the power or an affiliate, and 3) used in direct support of a service or industrial process located within the same facility or group of facilities that house the generating equipment. Direct use is exclusive of station use.

^E=Estimate. NA=Not available.

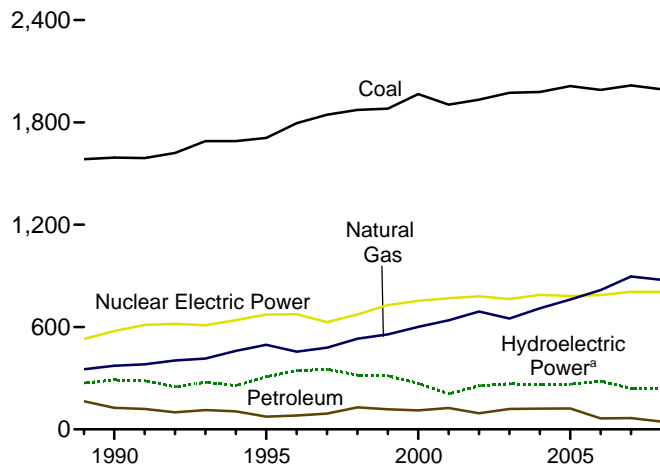
Notes: • See Note, "Classification of Power Plants Into Energy-Use Sectors," at end of section. • Totals may not equal sum of components due to independent rounding. • Geographic coverage is the 50 States and the District of Columbia.

Web Page: See <http://www.eia.doe.gov/emeu/mer/elect.html> for all available data beginning in 1973.

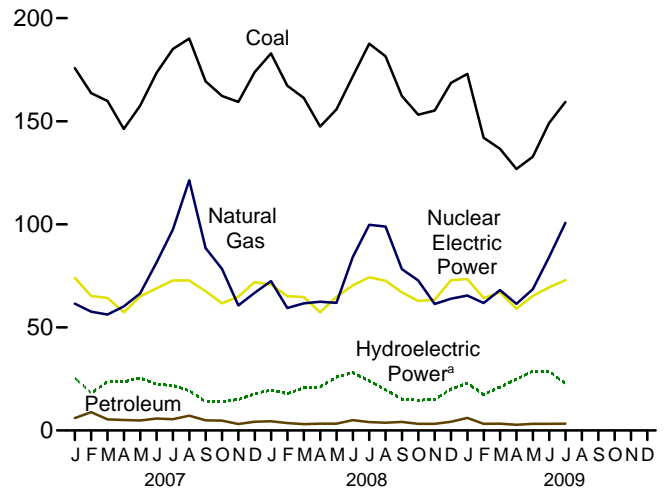
Sources: See end of section.

Figure 7.2 Electricity Net Generation
(Billion Kilowatthours)

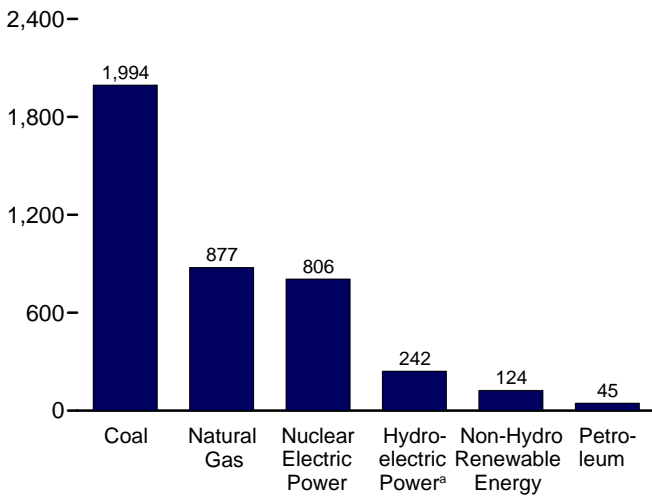
Total (All Sectors), Major Sources, 1989-2008



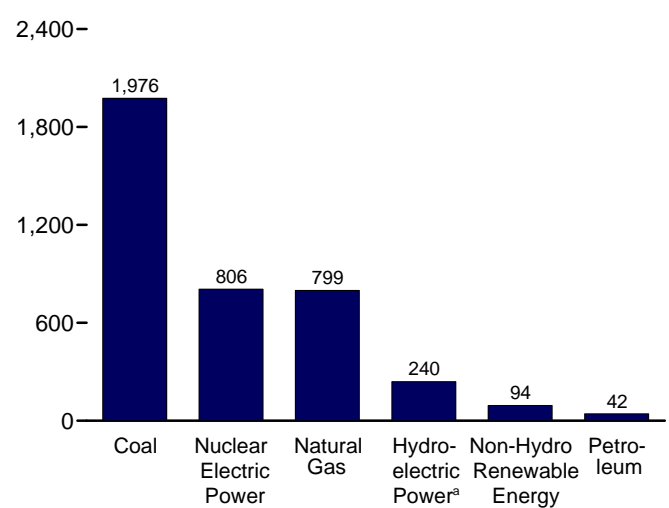
Total (All Sectors), Major Sources, Monthly



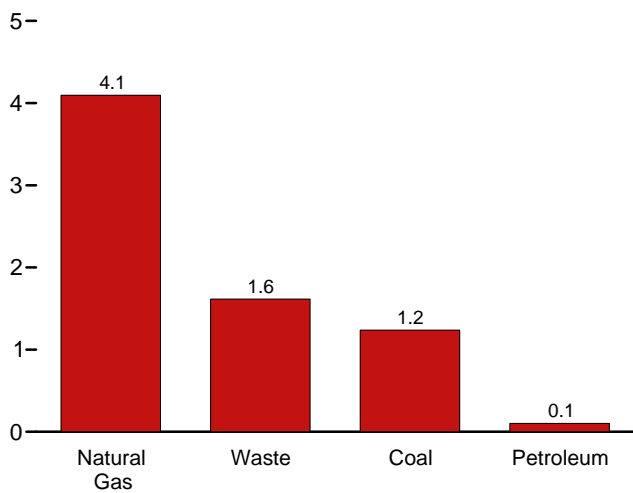
Total (All Sectors), Major Sources, 2008



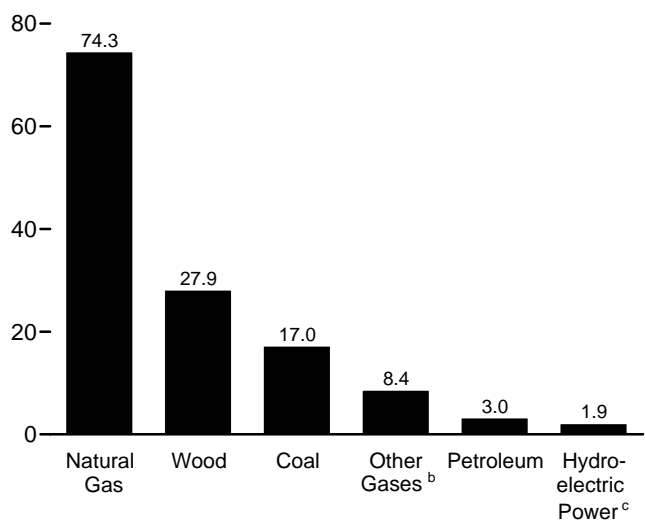
Electric Power Sector, Major Sources, 2008



Commercial Sector, Major Sources, 2008



Industrial Sector, Major Sources, 2008



^aConventional and pumped storage hydroelectric power.

^bBlast furnace gas, propane gas, and other manufactured and waste gases derived from fossil fuels.

^cConventional hydroelectric power.

Web Page: <http://www.eia.doe.gov/emeu/mer/elect.html>.
Sources: Tables 7.2a, 7.2b, and 7.2c.

Table 7.2a Electricity Net Generation: Total (All Sectors)
(Sum of Tables 7.2b and 7.2c; Million Kilowatthours)

	Fossil Fuels				Nuclear Electric Power	Hydro-electric Pumped Storage ^e	Renewable Energy					Total ⁱ	
	Coal ^a	Petroleum ^b	Natural Gas ^c	Other Gases ^d			Conventional Hydro-electric Power ^f	Biomass		Geo-thermal	Solar/PV ⁱ		Wind
								Wood ^g	Waste ^h				
1973 Total	847,651	314,343	340,858	NA	83,479	(f)	275,431	130	198	1,966	NA	NA	1,864,057
1975 Total	852,786	289,095	299,778	NA	172,505	(f)	303,153	18	174	3,246	NA	NA	1,920,755
1980 Total	1,161,562	245,994	346,240	NA	251,116	(f)	279,182	275	158	5,073	NA	NA	2,289,600
1985 Total	1,402,128	100,202	291,946	NA	383,691	(f)	284,311	743	640	9,325	11	6	2,473,002
1990 Total ^k	1,594,011	126,460	372,765	10,383	576,862	-3,508	292,866	32,522	13,260	15,434	367	2,789	3,037,827
1995 Total	1,709,426	74,554	496,058	13,870	673,402	-2,725	310,833	36,521	20,405	13,378	497	3,164	3,353,487
1996 Total	1,795,196	81,411	455,056	14,356	674,729	-3,088	347,162	36,800	20,911	14,329	521	3,234	3,444,188
1997 Total	1,845,016	92,555	479,399	13,351	628,644	-4,040	356,453	36,948	21,709	14,726	511	3,288	3,492,172
1998 Total	1,873,516	128,800	531,257	13,492	673,702	-4,467	323,336	36,338	22,448	14,774	502	3,026	3,620,295
1999 Total	1,881,087	118,061	556,396	14,126	728,254	-6,097	319,536	37,041	22,572	14,827	495	4,488	3,694,810
2000 Total	1,966,265	111,221	601,038	13,955	753,893	-5,539	275,573	37,595	23,131	14,093	493	5,593	3,802,105
2001 Total	1,903,956	124,880	639,129	9,039	768,826	-8,823	216,961	35,200	14,548	13,741	543	6,737	3,736,644
2002 Total	1,933,130	94,567	691,006	11,463	780,064	-8,743	264,329	38,665	15,044	14,491	555	10,354	3,858,452
2003 Total	1,973,737	119,406	649,908	15,600	763,733	-8,535	275,806	37,529	15,812	14,424	534	11,187	3,883,185
2004 Total	1,978,301	121,145	710,100	15,252	788,528	-8,488	268,417	38,117	15,421	14,811	575	14,144	3,970,555
2005 Total	2,012,873	122,225	760,960	13,464	781,986	-6,558	270,321	38,856	15,420	14,692	550	17,811	4,055,423
2006 Total	1,990,511	64,166	816,441	14,177	787,219	-6,558	289,246	38,762	16,099	14,568	508	26,589	4,064,702
2007 January	175,739	5,994	61,475	1,154	74,006	-572	26,045	3,536	1,371	1,296	13	2,452	353,531
February	163,603	8,884	57,622	981	65,225	-447	18,567	3,015	1,200	1,122	19	2,520	323,230
March	159,811	5,416	56,204	1,234	64,305	-458	24,163	3,106	1,373	1,204	48	3,047	320,471
April	146,250	5,080	60,153	1,163	57,301	-374	23,891	3,055	1,254	1,158	54	3,172	303,129
May	157,513	4,873	66,470	1,175	65,025	-547	26,047	3,081	1,349	1,155	84	2,952	330,203
June	173,513	5,777	81,511	1,154	68,923	-523	22,817	3,213	1,392	1,238	84	2,620	362,755
July	185,054	5,494	97,483	1,154	72,739	-595	22,478	3,434	1,443	1,250	86	2,158	393,226
August	190,135	7,187	121,338	1,132	72,751	-651	19,941	3,426	1,440	1,255	75	2,699	421,797
September	169,391	4,936	88,532	1,120	67,579	-743	14,743	3,290	1,400	1,218	68	2,867	355,394
October	162,234	4,747	78,358	1,134	61,690	-760	14,796	3,246	1,426	1,265	49	3,377	332,615
November	159,382	3,136	60,637	1,031	64,899	-662	15,682	3,273	1,425	1,211	24	3,095	314,103
December	173,830	4,215	66,808	1,022	71,983	-565	18,342	3,339	1,452	1,266	5	3,490	346,290
Total	2,016,456	65,739	896,590	13,453	806,425	-6,896	247,510	39,014	16,525	14,637	612	34,450	4,156,745
2008 January	182,899	4,437	72,415	1,064	70,736	-746	20,340	3,410	1,415	1,200	15	4,127	362,142
February	167,178	3,637	59,443	943	65,130	-403	18,323	3,139	1,275	1,071	34	3,730	324,275
March	161,281	3,058	61,654	1,112	64,716	-553	21,160	3,223	1,427	1,233	70	4,697	323,932
April	147,391	3,286	62,407	986	57,333	-132	21,306	3,041	1,505	1,217	86	5,013	304,334
May	155,703	3,310	61,888	1,010	64,826	-587	26,437	3,077	1,520	1,273	94	5,113	324,589
June	171,683	4,983	84,122	1,120	70,319	-372	28,493	3,262	1,503	1,280	129	4,977	372,443
July	187,613	4,095	99,781	1,165	74,318	-799	24,811	3,457	1,475	1,304	114	3,813	402,088
August	181,469	3,763	98,880	1,148	72,617	-648	20,385	3,493	1,464	1,285	107	3,092	387,975
September	162,248	4,149	78,305	817	67,054	-513	15,662	3,224	1,349	1,243	94	2,781	337,259
October	153,143	3,204	72,767	777	62,793	-497	15,120	3,127	1,332	1,278	58	4,309	318,232
November	155,146	3,203	61,386	690	63,408	-492	15,479	3,188	1,341	1,238	27	4,538	309,930
December	168,632	4,229	63,901	739	72,931	-498	20,567	3,145	1,480	1,237	15	5,837	343,061
Total	1,994,385	45,354	876,948	11,573	806,182	-6,238	248,085	38,789	17,086	14,859	843	52,026	4,110,259
2009 January	172,924	6,102	65,474	767	73,479	-522	23,476	3,150	1,347	1,256	5	5,431	353,690
February	142,007	3,213	61,826	751	64,227	-243	17,705	2,902	1,263	1,147	27	4,997	300,613
March	136,625	3,324	68,084	793	66,920	-315	21,394	2,985	1,445	1,254	69	6,507	310,024
April	126,840	2,783	61,446	787	59,129	-342	25,224	2,809	1,429	1,167	88	6,758	289,065
May	132,723	3,243	68,471	737	65,229	-368	29,142	2,822	1,381	1,197	98	5,755	311,411
June	149,156	3,251	84,098	864	69,435	-226	28,866	3,027	1,420	1,170	94	4,957	347,069
July	159,404	3,323	100,664	945	72,949	-439	23,225	3,238	1,470	1,225	108	4,519	371,631
7-Month Total	1,019,680	25,239	510,063	5,644	471,368	-2,455	169,032	20,933	9,755	8,417	488	38,925	2,283,503
2008 7-Month Total	1,173,748	26,806	501,709	7,401	467,379	-3,590	160,872	22,611	10,120	8,578	543	31,469	2,413,803
2007 7-Month Total	1,161,483	41,518	480,917	8,015	467,524	-3,515	164,007	22,440	9,382	8,423	389	18,922	2,386,546

^a Anthracite, bituminous coal, subbituminous coal, lignite, waste coal, and coal synfuel.

^b Distillate fuel oil, residual fuel oil, petroleum coke, jet fuel, kerosene, other petroleum, and waste oil.

^c Natural gas, plus a small amount of supplemental gaseous fuels.

^d Blast furnace gas, propane gas, and other manufactured and waste gases derived from fossil fuels.

^e Pumped storage facility production minus energy used for pumping.

^f Through 1989, hydroelectric pumped storage is included in "Conventional Hydroelectric Power."

^g Wood and wood-derived fuels.

^h Municipal solid waste from biogenic sources, landfill gas, sludge waste, agricultural byproducts, and other biomass. Through 2000, also includes non-renewable waste (municipal solid waste from non-biogenic sources, and tire-derived fuels).

ⁱ Solar thermal and photovoltaic energy.

^j Includes batteries, chemicals, hydrogen, pitch, purchased steam, sulfur, miscellaneous technologies, and, beginning in 2001, non-renewable waste (municipal solid waste from non-biogenic sources, and tire-derived fuels).

^k Through 1988, all data except hydroelectric are for electric utilities only; hydroelectric data through 1988 include industrial plants as well as electric utilities. Beginning in 1989, data are for electric utilities, independent power producers, commercial plants, and industrial plants.

NA=Not available.

Notes: • Totals may not equal sum of components due to independent rounding. • Geographic coverage is the 50 States and the District of Columbia.

Web Page: See <http://www.eia.doe.gov/emeu/mer/elect.html> for all available data beginning in 1973.

Sources: See sources for Tables 7.2b and 7.2c.

Table 7.2b Electricity Net Generation: Electric Power Sector
(Subset of Table 7.2a; Million Kilowatthours)

	Fossil Fuels				Nuclear Electric Power	Hydro-electric Pumped Storage ^e	Renewable Energy						Total ^j
	Coal ^a	Petroleum ^b	Natural Gas ^c	Other Gases ^d			Conventional Hydro-electric Power ^f	Biomass		Geo-thermal	Solar/PV ⁱ	Wind	
								Wood ^g	Waste ^h				
1973 Total	847,651	314,343	340,858	NA	83,479	(f)	272,083	130	198	1,966	NA	NA	1,860,710
1975 Total	852,786	289,095	299,778	NA	172,505	(f)	300,047	18	174	3,246	NA	NA	1,917,649
1980 Total	1,161,562	245,994	346,240	NA	251,116	(f)	276,021	275	158	5,073	NA	NA	2,286,439
1985 Total	1,402,128	100,202	291,946	NA	383,691	(f)	281,149	743	640	9,325	11	6	2,469,841
1990 Total ^k	1,572,109	118,864	309,486	621	576,862	-3,508	289,753	7,032	11,500	15,434	367	2,789	2,901,322
1995 Total	1,686,056	68,146	419,179	1,927	673,402	-2,725	305,410	7,597	17,986	13,378	497	3,164	3,194,230
1996 Total	1,771,973	74,783	378,757	1,341	674,729	-3,088	341,159	8,386	17,816	14,329	521	3,234	3,284,141
1997 Total	1,820,762	86,479	399,596	1,533	628,644	-4,040	350,648	8,680	18,485	14,726	511	3,288	3,329,375
1998 Total	1,850,193	122,211	449,293	2,315	673,702	-4,467	317,867	8,608	19,233	14,774	502	3,026	3,457,416
1999 Total	1,858,618	111,539	472,996	1,607	728,254	-6,097	314,663	8,961	19,493	14,827	495	4,488	3,529,982
2000 Total	1,943,111	105,192	517,978	2,028	753,893	-5,539	271,338	8,916	20,307	14,093	493	5,593	3,637,529
2001 Total	1,882,826	119,149	554,940	586	768,826	-8,823	213,749	8,294	12,944	13,741	543	6,737	3,580,053
2002 Total	1,910,613	89,733	607,683	1,970	780,064	-8,743	260,491	9,009	13,145	14,491	555	10,354	3,698,458
2003 Total	1,952,714	113,697	567,303	2,647	763,733	-8,535	271,512	9,528	13,808	14,424	534	11,187	3,721,159
2004 Total	1,957,188	114,678	627,172	3,568	788,528	-8,488	265,064	9,736	13,062	14,811	575	14,144	3,808,360
2005 Total	1,992,054	116,482	683,829	3,777	781,986	-6,558	267,040	10,570	13,031	14,692	550	17,811	3,902,192
2006 Total	1,969,737	59,708	734,417	4,254	787,219	-6,558	286,254	10,341	13,927	14,568	508	26,589	3,908,077
2007 January	174,253	5,574	53,809	375	74,006	-572	25,853	1,145	1,184	1,296	13	2,452	339,968
February	162,199	8,427	51,626	312	65,225	-447	18,420	845	1,037	1,122	19	2,520	311,810
March	158,273	4,988	50,026	345	64,305	-458	23,969	839	1,182	1,204	48	3,047	308,331
April	144,799	4,673	54,126	315	57,301	-374	23,694	727	1,081	1,158	54	3,172	291,254
May	155,991	4,475	59,991	316	65,025	-547	25,867	793	1,165	1,155	84	2,952	317,826
June	171,994	5,417	74,888	331	68,923	-523	22,690	888	1,209	1,238	84	2,620	350,339
July	183,483	5,142	90,157	339	72,739	-595	22,387	939	1,248	1,250	86	2,158	379,914
August	188,516	6,815	113,395	341	72,751	-651	19,865	962	1,253	1,255	75	2,699	407,865
September	167,888	4,650	81,511	322	67,579	-743	14,666	906	1,220	1,218	68	2,867	342,713
October	160,696	4,446	71,321	379	61,690	-760	14,696	868	1,228	1,265	49	3,377	319,830
November	157,936	2,835	54,031	332	64,899	-662	15,554	882	1,225	1,211	24	3,095	301,907
December	172,361	3,864	59,872	337	71,983	-565	18,180	918	1,262	1,266	5	3,490	333,586
Total	1,998,390	61,306	814,752	4,042	806,425	-6,896	245,843	10,711	14,294	14,637	612	34,450	4,005,343
2008 January	181,400	4,123	65,021	285	70,736	-746	20,118	965	1,241	1,200	15	4,127	349,063
February	165,797	3,384	52,969	239	65,130	-403	18,079	904	1,095	1,071	34	3,730	312,548
March	159,723	2,803	55,088	346	64,716	-553	20,898	930	1,250	1,233	70	4,697	311,759
April	145,918	3,065	56,286	273	57,333	-132	21,123	796	1,303	1,217	86	5,013	292,870
May	154,175	3,108	55,437	301	64,826	-587	26,255	765	1,309	1,273	94	5,113	312,659
June	170,110	4,719	77,447	320	70,319	-372	28,348	887	1,291	1,280	129	4,977	360,064
July	185,889	3,846	92,425	335	74,318	-799	24,673	983	1,268	1,304	114	3,813	388,761
August	179,840	3,520	91,605	309	72,617	-648	20,256	1,006	1,275	1,285	107	3,092	374,864
September	160,634	3,874	72,779	189	67,054	-513	15,558	943	1,175	1,243	94	2,781	326,365
October	151,617	2,965	66,326	215	62,793	-497	15,022	804	1,181	1,278	58	4,309	306,623
November	153,820	2,990	55,446	166	63,408	-492	15,365	940	1,176	1,238	27	4,538	299,165
December	167,249	3,904	57,744	218	72,931	-498	20,406	979	1,307	1,237	15	5,837	331,928
Total	1,976,173	42,301	798,574	3,196	806,182	-6,238	246,100	10,902	14,872	14,859	843	52,206	3,966,670
2009 January	171,533	5,728	59,038	218	73,479	-522	23,301	955	1,167	1,256	5	5,431	342,150
February	140,761	2,931	55,687	209	64,227	-243	17,557	911	1,117	1,147	27	4,997	289,839
March	135,303	3,072	61,526	236	66,920	-315	21,205	812	1,262	1,254	69	6,507	298,431
April	125,591	2,549	55,463	235	59,129	-342	25,028	739	1,267	1,167	88	6,758	278,255
May	131,451	2,985	62,363	229	65,229	-368	28,940	751	1,207	1,197	98	5,755	300,408
June	147,823	3,002	77,618	249	69,435	-226	28,676	927	1,242	1,170	94	4,957	335,546
July	157,952	3,099	93,713	287	72,949	-439	23,078	938	1,283	1,225	108	4,519	359,319
7-Month Total	1,010,415	23,367	465,408	1,663	471,368	-2,455	167,785	6,032	8,545	8,417	488	38,925	2,203,948
2008 7-Month Total	1,163,013	25,048	454,674	2,098	467,379	-3,590	159,493	6,229	8,758	8,578	543	31,469	2,327,725
2007 7-Month Total	1,150,993	38,696	434,623	2,332	467,524	-3,515	162,882	6,175	8,107	8,423	389	18,922	2,299,442

^a Anthracite, bituminous coal, subbituminous coal, lignite, waste coal, and coal synfuel.

^b Distillate fuel oil, residual fuel oil, petroleum coke, jet fuel, kerosene, other petroleum, and waste oil.

^c Natural gas, plus a small amount of supplemental gaseous fuels.

^d Blast furnace gas, propane gas, and other manufactured and waste gases derived from fossil fuels.

^e Pumped storage facility production minus energy used for pumping.

^f Through 1989, hydroelectric pumped storage is included in "Conventional Hydroelectric Power."

^g Wood and wood-derived fuels.

^h Municipal solid waste from biogenic sources, landfill gas, sludge waste, agricultural byproducts, and other biomass. Through 2000, also includes non-renewable waste (municipal solid waste from non-biogenic sources, and tire-derived fuels).

ⁱ Solar thermal and photovoltaic energy.

^j Includes batteries, chemicals, hydrogen, pitch, purchased steam, sulfur, miscellaneous technologies, and, beginning in 2001, non-renewable waste (municipal solid waste from non-biogenic sources, and tire-derived fuels).

^k Through 1988, data are for electric utilities only. Beginning in 1989, data are for electric utilities and independent power producers.

NA=Not available.

Notes: • The electric power sector comprises electricity-only and combined-heat-and-power (CHP) plants within the NAICS 22 category whose primary business is to sell electricity, or electricity and heat, to the public. • Totals may not equal sum of components due to independent rounding. • Geographic coverage is the 50 States and the District of Columbia.

Web Page: See <http://www.eia.doe.gov/emeu/mer/elect.html> for all available data beginning in 1973.

Sources: See end of section.

Table 7.2c Electricity Net Generation: Commercial and Industrial Sectors
(Subset of Table 7.2a; Million Kilowatthours)

	Commercial Sector ^a					Industrial Sector ^b							
	Coal ^c	Petroleum ^d	Natural Gas ^e	Biomass	Total ^g	Coal ^c	Petroleum ^d	Natural Gas ^e	Other Gases ^h	Hydroelectric Power ⁱ	Biomass		Total ^k
				Waste ^f							Wood ^j	Waste ^f	
1973 Total	NA	NA	NA	NA	NA	NA	NA	NA	NA	3,347	NA	NA	3,347
1975 Total	NA	NA	NA	NA	NA	NA	NA	NA	NA	3,106	NA	NA	3,106
1980 Total	NA	NA	NA	NA	NA	NA	NA	NA	NA	3,161	NA	NA	3,161
1985 Total	NA	NA	NA	NA	NA	NA	NA	NA	NA	3,161	NA	NA	3,161
1990 Total	796	589	3,272	812	5,837	21,107	7,008	60,007	9,641	2,975	25,379	949	130,830
1995 Total	998	379	5,162	1,519	8,232	22,372	6,030	71,717	11,943	5,304	28,868	900	151,025
1996 Total	1,051	369	5,249	2,176	9,030	22,172	6,260	71,049	13,015	5,878	28,354	919	151,017
1997 Total	1,040	427	4,725	2,342	8,701	23,214	5,649	75,078	11,814	5,685	28,225	882	154,097
1998 Total	985	383	4,879	2,335	8,748	22,337	6,206	77,085	11,170	5,349	27,693	880	154,132
1999 Total	995	434	4,607	2,393	8,563	21,474	6,088	78,793	12,519	4,758	28,060	686	156,264
2000 Total	1,097	432	4,262	1,985	7,903	22,056	5,597	78,798	11,927	4,135	28,652	839	156,673
2001 Total	995	438	4,434	1,007	7,416	20,135	5,293	79,755	8,454	3,145	26,888	596	149,175
2002 Total	992	431	4,310	1,053	7,415	21,525	4,403	79,013	9,493	3,825	29,643	846	152,580
2003 Total	1,206	423	3,899	1,289	7,496	19,817	5,285	78,705	12,953	4,222	27,988	715	154,530
2004 Total	1,340	499	3,969	1,562	8,270	19,773	5,967	78,959	11,684	3,248	28,367	797	153,925
2005 Total	1,353	375	4,249	1,657	8,492	19,466	5,368	72,882	9,687	3,195	28,271	733	144,739
2006 Total	1,310	235	4,355	1,599	8,371	19,464	4,223	77,669	9,923	2,899	28,400	572	148,254
2007 January	120	27	318	131	669	1,367	394	7,348	779	180	2,390	56	12,894
February	120	44	309	109	641	1,283	412	5,686	669	138	2,169	53	10,779
March	115	24	323	128	659	1,423	404	5,855	889	183	2,266	63	11,481
April	100	16	319	127	639	1,350	391	5,708	848	185	2,327	45	11,236
May	108	9	341	138	680	1,414	390	6,137	859	168	2,287	46	11,697
June	112	11	374	136	707	1,407	349	6,249	823	121	2,325	47	11,709
July	116	8	419	146	763	1,455	344	6,907	815	89	2,494	49	12,550
August	127	13	434	136	774	1,492	358	7,510	791	76	2,463	50	13,157
September	113	7	364	134	684	1,389	278	6,657	798	76	2,383	46	11,997
October	107	7	374	142	706	1,431	294	6,663	755	97	2,376	56	12,080
November	115	6	335	139	667	1,332	295	6,270	699	123	2,390	61	11,528
December	119	17	347	133	686	1,350	334	6,590	686	154	2,419	57	12,018
Total	1,371	189	4,257	1,599	8,273	16,694	4,243	77,580	9,411	1,590	28,287	631	143,128
2008 January	110	14	382	126	699	1,390	299	7,011	780	216	2,443	49	12,381
February	98	10	344	113	622	1,283	244	6,129	704	238	2,234	67	11,104
March	77	6	353	125	634	1,482	249	6,213	766	251	2,290	52	11,538
April	95	5	310	149	642	1,378	216	5,811	713	171	2,244	53	10,821
May	96	4	304	153	640	1,431	199	6,147	710	175	2,311	58	11,290
June	114	9	315	155	677	1,459	256	6,360	800	139	2,373	56	11,702
July	122	10	354	145	709	1,603	238	7,001	830	131	2,472	61	12,618
August	112	7	372	143	709	1,517	237	6,903	839	125	2,485	46	12,402
September	106	7	353	136	678	1,508	268	5,173	628	102	2,279	38	10,216
October	99	7	334	116	624	1,426	232	6,107	562	95	2,321	35	10,984
November	97	9	314	126	608	1,229	203	5,626	524	110	2,245	39	10,157
December	112	14	359	128	677	1,270	310	5,799	521	155	2,165	44	10,456
Total	1,237	102	4,095	1,616	7,920	16,975	2,950	74,279	8,377	1,910	27,862	598	135,668
2009 January	106	28	352	125	671	1,286	345	6,084	549	165	2,194	55	10,870
February	87	10	328	101	582	1,159	272	5,811	542	141	1,989	45	10,191
March	91	9	343	133	654	1,231	243	6,215	557	177	2,170	51	10,938
April	82	11	333	126	632	1,166	223	5,650	552	185	2,068	36	10,178
May	85	13	320	143	646	1,187	245	5,788	509	192	2,069	31	10,357
June	90	10	322	141	642	1,243	239	6,157	615	180	2,099	37	10,881
July	104	10	355	141	685	1,348	213	6,597	658	143	2,298	45	11,627
7-Month Total	645	92	2,353	910	4,512	8,619	1,780	42,301	3,981	1,185	14,887	300	75,043
2008 7-Month Total	711	57	2,364	966	4,624	10,025	1,700	44,672	5,303	1,323	16,367	396	81,454
2007 7-Month Total	790	139	2,403	915	4,757	9,700	2,684	43,891	5,682	1,064	16,257	360	82,347

^a Commercial combined-heat-and-power (CHP) and commercial electricity-only plants.

^b Industrial combined-heat-and-power (CHP) and industrial electricity-only plants.

^c Anthracite, bituminous coal, subbituminous coal, lignite, waste coal, and coal synfuel.

^d Distillate fuel oil, residual fuel oil, petroleum coke, jet fuel, kerosene, other petroleum, and waste oil.

^e Natural gas, plus a small amount of supplemental gaseous fuels.

^f Municipal solid waste from biogenic sources, landfill gas, sludge waste, agricultural byproducts, and other biomass. Through 2000, also includes non-renewable waste (municipal solid waste from non-biogenic sources, and tire-derived fuels).

^g Includes a small amount of conventional hydroelectric power, other gases, wood, and other, which are not separately displayed.

^h Blast furnace gas, propane gas, and other manufactured and waste gases derived from fossil fuels.

ⁱ Conventional hydroelectric power.

^j Wood and wood-derived fuels.

^k Includes batteries, chemicals, hydrogen, pitch, purchased steam, sulfur, miscellaneous technologies, and, beginning in 2001, non-renewable waste (municipal solid waste from non-biogenic sources, and tire-derived fuels).

NA=Not available.

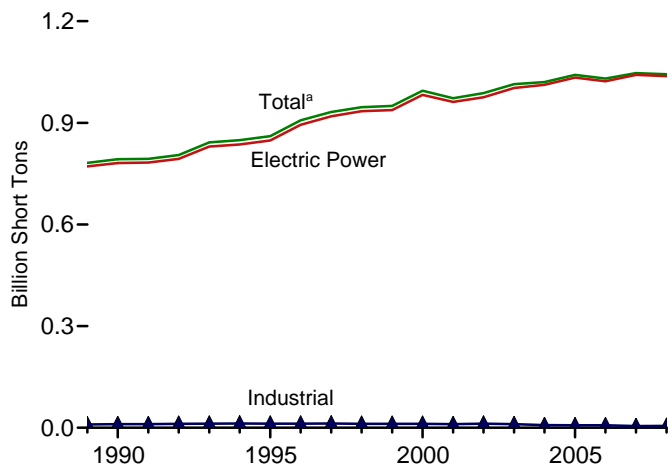
Notes: • See Note, "Classification of Power Plants Into Energy-Use Sectors," at end of section. • Totals may not equal sum of components due to independent rounding. • Geographic coverage is the 50 States and the District of Columbia.

Web Page: See <http://www.eia.doe.gov/emeu/mer/elect.html> for all available data beginning in 1973.

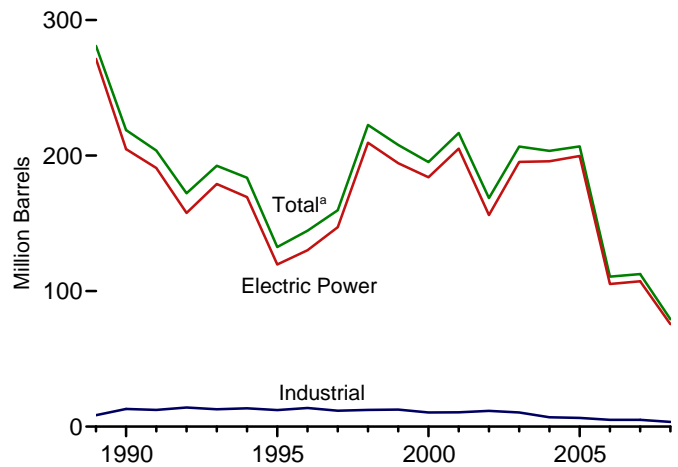
Sources: See end of section.

Figure 7.3 Consumption of Selected Combustible Fuels for Electricity Generation

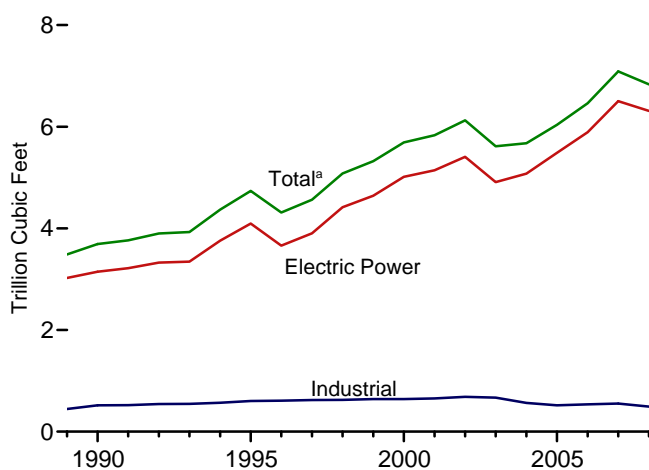
Coal by Sector, 1989-2008



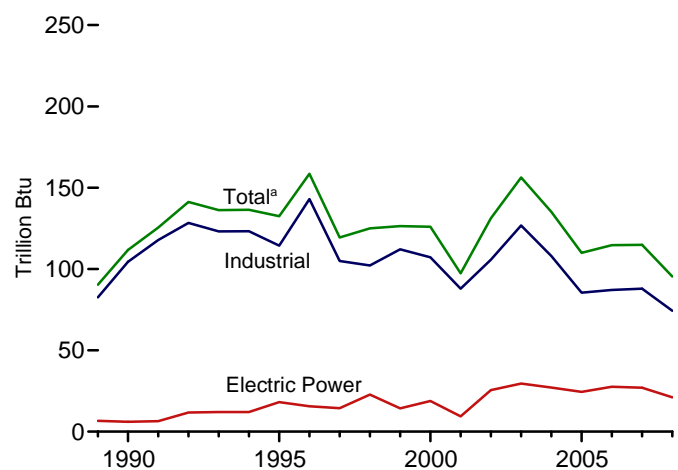
Petroleum by Sector, 1989-2008



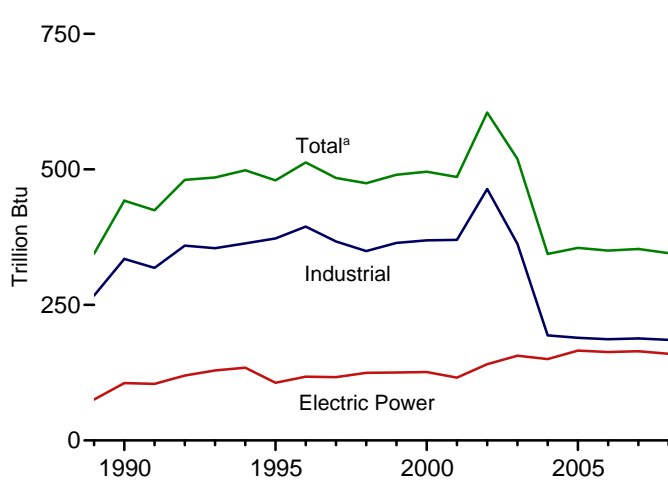
Natural Gas by Sector, 1989-2008



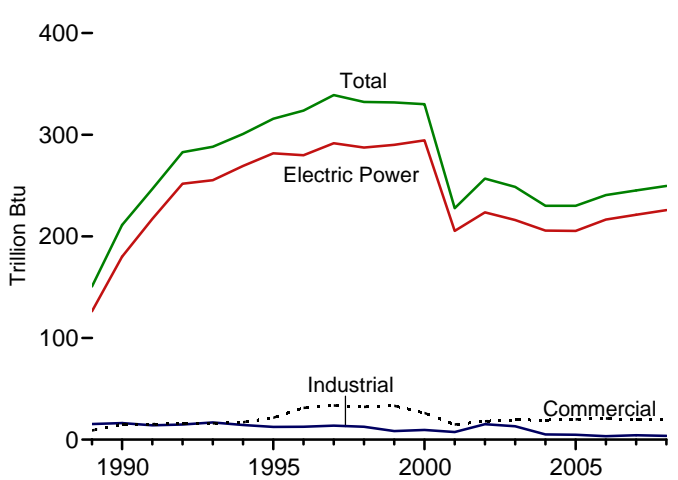
Other Gases^b by Sector, 1989-2008



Wood by Sector, 1989-2008



Waste by Sector, 1989-2008



^aIncludes commercial sector.

^bBlast furnace gas, propane gas, and other manufactured and waste gases derived from fossil fuels.

Web Page: <http://www.eia.doe.gov/emeu/mer/elect.html>.

Sources: Tables 7.3a, 7.3b, and 7.3c.

**Table 7.3a Consumption of Combustible Fuels for Electricity Generation:
Total (All Sectors) (Sum of Tables 7.3b and 7.3c)**

	Coal ^a	Petroleum					Natural Gas ^f	Other Gases ^g	Biomass		Other ⁱ
		Distillate Fuel Oil ^b	Residual Fuel Oil ^c	Other Liquids ^d	Petroleum Coke ^e	Total ^e			Wood ^h	Waste ⁱ	
		Thousand Short Tons	Thousand Barrels			Thousand Short Tons			Thousand Barrels	Billion Cubic Feet	
1973 Total	389,212	47,058	513,190	NA	507	562,781	3,660	NA	1	2	NA
1975 Total	405,962	38,907	467,221	NA	70	506,479	3,158	NA	(s)	2	NA
1980 Total	569,274	29,051	391,163	NA	179	421,110	3,682	NA	3	2	NA
1985 Total	693,841	14,635	158,779	NA	231	174,571	3,044	NA	8	7	NA
1990 Total ^k	792,457	18,143	190,652	437	1,914	218,800	3,692	112	442	211	36
1995 Total	860,594	19,615	95,507	680	3,355	132,578	4,738	133	480	316	42
1996 Total	907,209	20,252	106,055	1,712	3,322	144,626	4,312	159	513	324	37
1997 Total	931,949	20,309	118,741	237	4,086	159,715	4,565	119	484	339	36
1998 Total	946,295	25,062	172,728	549	4,860	222,640	5,081	125	475	332	36
1999 Total	949,802	25,951	158,187	974	4,552	207,871	5,322	126	490	332	41
2000 Total	994,933	31,675	143,381	1,450	3,744	195,228	5,691	126	496	330	46
2001 Total	972,691	31,150	165,312	855	3,871	216,672	5,832	97	486	228	160
2002 Total	987,583	23,286	109,235	1,894	6,836	168,597	6,126	131	605	257	191
2003 Total	1,014,058	29,672	142,518	2,947	6,303	206,653	5,616	156	519	249	193
2004 Total	1,020,523	20,163	142,088	2,856	7,677	203,494	5,675	135	344	230	183
2005 Total	1,041,448	20,651	141,518	2,968	8,330	206,785	6,036	110	355	230	173
2006 Total	1,030,556	13,174	58,473	2,174	7,363	110,634	6,462	115	350	241	172
2007 January	91,776	1,445	5,770	207	585	10,349	476	10	33	20	14
February	84,100	2,502	9,671	412	470	14,934	442	8	28	18	13
March	81,932	1,262	5,333	299	475	9,270	433	10	29	20	14
April	75,918	973	5,028	255	466	8,584	471	10	27	19	13
May	81,309	1,036	4,462	261	506	8,288	528	10	28	20	14
June	89,846	1,243	5,561	219	579	9,916	648	10	29	21	14
July	96,727	1,202	5,559	201	519	9,556	782	10	31	21	14
August	99,245	1,720	7,585	268	540	12,271	992	10	30	21	15
September	88,089	985	4,830	206	493	8,484	705	10	30	21	14
October	83,995	1,147	4,555	211	446	8,143	626	10	29	21	14
November	82,495	955	2,172	175	431	5,456	469	9	29	21	13
December	91,363	1,213	3,307	204	528	7,362	517	9	31	22	15
Total	1,046,795	15,683	63,833	2,917	6,036	112,615	7,089	115	353	245	168
2008 January	94,173	1,705	3,250	274	515	7,805	548	9	30	21	12
February	86,290	1,192	2,618	203	473	6,377	450	8	28	18	11
March	83,185	864	2,266	193	418	5,415	474	9	30	23	14
April	77,139	857	2,566	160	425	5,707	479	8	27	21	13
May	81,572	863	2,736	160	409	5,802	489	8	27	21	13
June	89,785	1,388	4,735	218	499	8,836	678	9	29	22	14
July	98,234	1,041	3,832	149	439	7,215	798	10	31	21	14
August	95,726	852	3,196	150	475	6,574	781	10	31	21	14
September	85,895	935	3,889	199	438	7,213	614	7	28	20	12
October	80,624	702	2,273	134	474	5,481	561	7	27	19	12
November	81,245	763	2,535	148	415	5,518	472	6	28	20	12
December	89,721	1,269	3,682	271	416	7,303	489	6	28	22	13
Total	1,043,589	12,431	37,578	2,259	5,396	79,246	6,833	95	345	250	154
2009 January	90,986	1,899	5,907	357	428	10,304	497	6	29	20	12
February	74,574	1,153	2,337	223	392	5,673	466	6	25	18	11
March	72,268	1,221	1,995	250	495	5,941	517	7	26	21	13
April	67,370	784	1,655	180	435	4,797	472	7	24	20	13
May	70,841	1,098	2,205	194	440	5,697	535	6	25	21	14
June	79,198	1,009	2,370	145	437	5,707	666	7	27	21	14
July	84,650	952	2,540	143	448	5,876	795	8	31	21	14
7-Month Total	539,888	8,116	19,009	1,492	3,075	43,995	3,947	46	187	142	92
2008 7-Month Total	610,378	7,910	22,003	1,357	3,177	47,158	3,916	60	202	148	91
2007 7-Month Total	601,608	9,663	41,384	1,854	3,600	70,898	3,780	69	204	139	97

^a Anthracite, bituminous coal, subbituminous coal, lignite, waste coal, and coal synfuel.

^b Fuel oil nos. 1, 2, and 4. For 1973-1979, data are for gas turbine and internal combustion plant use of petroleum. For 1980-2000, electric utility data also include small amounts of kerosene and jet fuel.

^c Fuel oil nos. 5 and 6. For 1973-1979, data are for steam plant use of petroleum. For 1980-2000, electric utility data also include a small amount of fuel oil no. 4.

^d Jet fuel, kerosene, other petroleum liquids, and waste oil.

^e Petroleum coke is converted from short tons to barrels by multiplying by 5.

^f Natural gas, plus a small amount of supplemental gaseous fuels.

^g Blast furnace gas, propane gas, and other manufactured and waste gases derived from fossil fuels.

^h Wood and wood-derived fuels.

ⁱ Municipal solid waste from biogenic sources, landfill gas, sludge waste, agricultural byproducts, and other biomass. Through 2000, also includes non-renewable waste (municipal solid waste from non-biogenic sources, and

tire-derived fuels).

^j Batteries, chemicals, hydrogen, pitch, purchased steam, sulfur, miscellaneous technologies, and, beginning in 2001, non-renewable waste (municipal solid waste from non-biogenic sources, and tire-derived fuels).

^k Through 1988, data are for electric utilities only. Beginning in 1989, data are for electric utilities, independent power producers, commercial plants, and industrial plants.

NA=Not available. (s)=Less than 0.5 trillion Btu.

Notes: • Data are for fuels consumed to produce electricity. Data also include fuels consumed to produce useful thermal output at a small number of electric utility combined-heat-and-power (CHP) plants. • Totals may not equal sum of components due to independent rounding. • Geographic coverage is the 50 States and the District of Columbia.

Web Page: See <http://www.eia.doe.gov/emeu/mer/elect.html> for all available data beginning in 1973.

Sources: See sources for Tables 7.3b and 7.3c.

Table 7.3b Consumption of Combustible Fuels for Electricity Generation: Electric Power Sector (Subset of Table 7.3a)

	Coal ^a	Petroleum					Natural Gas ^f	Other Gases ^g	Biomass		Other ⁱ
		Distillate Fuel Oil ^b	Residual Fuel Oil ^c	Other Liquids ^d	Petroleum Coke ^e	Total ^e			Wood ^h	Waste ⁱ	
		Thousand Short Tons	Thousand Barrels			Thousand Short Tons			Thousand Barrels	Billion Cubic Feet	
1973 Total	389,212	47,058	513,190	NA	507	562,781	3,660	NA	1	2	NA
1975 Total	405,962	38,907	467,221	NA	70	506,479	3,158	NA	(s)	2	NA
1980 Total	569,274	29,051	391,163	NA	179	421,110	3,682	NA	3	2	NA
1985 Total	693,841	14,635	158,779	NA	231	174,571	3,044	NA	8	7	NA
1990 Total ^k	781,301	16,394	183,285	25	1,008	204,745	3,147	6	106	180	(s)
1995 Total	847,854	18,066	88,895	441	2,452	119,663	4,094	18	106	282	2
1996 Total	894,400	18,472	98,795	567	2,467	130,168	3,660	16	117	280	2
1997 Total	919,009	18,646	112,423	130	3,201	147,202	3,903	14	117	292	1
1998 Total	934,126	23,166	165,875	411	3,999	209,447	4,416	23	125	287	2
1999 Total	937,888	23,875	151,921	514	3,607	194,345	4,644	14	125	290	1
2000 Total	982,713	29,722	138,047	403	3,155	183,946	5,014	19	126	294	1
2001 Total	961,523	29,056	159,150	374	3,308	205,119	5,142	9	116	205	109
2002 Total	975,251	21,810	104,577	1,243	5,705	156,154	5,408	25	141	224	137
2003 Total	1,003,036	27,441	137,361	1,937	5,719	195,336	4,909	30	156	216	136
2004 Total	1,012,459	18,793	138,831	2,511	7,135	195,809	5,075	27	150	206	131
2005 Total	1,033,567	19,450	138,337	2,591	7,877	199,760	5,485	24	166	205	116
2006 Total	1,022,802	12,578	56,347	1,783	6,905	105,235	5,891	28	163	216	117
2007 January	91,344	1,391	5,545	189	546	9,853	421	2	18	18	10
February	83,698	2,431	9,420	398	431	14,405	399	2	13	16	9
March	81,459	1,212	5,111	271	435	8,769	389	2	13	18	10
April	75,471	934	4,847	185	424	8,087	427	2	12	17	9
May	80,840	993	4,329	179	461	7,804	481	2	12	18	10
June	89,381	1,203	5,444	170	532	9,475	600	2	14	19	10
July	96,243	1,170	5,450	158	473	9,142	729	2	14	19	10
August	98,751	1,678	7,475	218	493	11,835	935	2	14	19	10
September	87,625	950	4,737	189	453	8,138	654	2	14	19	10
October	83,515	1,099	4,460	191	407	7,783	576	2	13	19	10
November	82,082	919	2,078	161	385	5,081	422	2	14	19	9
December	90,937	1,155	3,175	189	485	6,942	468	2	14	20	10
Total	1,041,346	15,135	62,072	2,496	5,523	107,316	6,502	27	165	221	117
2008 January	93,718	1,647	3,127	260	481	7,437	499	2	14	19	10
February	85,872	1,160	2,523	190	439	6,069	406	2	13	16	8
March	82,683	838	2,180	167	387	5,120	430	2	14	21	11
April	76,655	838	2,496	145	393	5,447	438	2	12	19	10
May	81,064	840	2,677	146	380	5,564	446	2	12	19	10
June	89,268	1,354	4,651	200	463	8,522	633	2	13	19	10
July	97,673	986	3,758	135	408	6,917	750	2	14	19	10
August	95,189	810	3,134	137	440	6,279	732	2	15	20	10
September	85,367	854	3,823	171	406	6,882	576	1	13	18	10
October	80,120	684	2,212	114	438	5,201	518	1	12	18	9
November	80,835	740	2,466	138	385	5,270	432	1	13	18	9
December	89,294	1,229	3,558	210	385	6,920	448	1	14	20	10
Total	1,037,738	11,981	36,606	2,013	5,005	75,626	6,309	21	160	226	118
2009 January	90,551	1,809	5,746	331	394	9,859	453	1	14	17	9
February	74,182	1,049	2,255	199	362	5,312	424	1	12	16	8
March	71,830	1,183	1,932	205	461	5,625	473	2	12	19	10
April	66,951	746	1,605	150	402	4,512	430	2	11	18	9
May	70,400	1,006	2,149	179	405	5,359	493	2	11	19	10
June	78,753	940	2,318	125	404	5,405	621	2	13	19	10
July	84,160	885	2,497	133	415	5,588	748	2	14	19	10
7-Month Total	536,828	7,618	18,500	1,323	2,844	41,659	3,641	11	87	128	67
2008 7-Month Total	606,933	7,664	21,413	1,243	2,951	45,075	3,602	14	93	133	69
2007 7-Month Total	598,436	9,335	40,147	1,549	3,301	67,536	3,447	16	96	126	67

^a Anthracite, bituminous coal, subbituminous coal, lignite, waste coal, and coal synfuel.

^b Fuel oil nos. 1, 2, and 4. For 1973-1979, data are for gas turbine and internal combustion plant use of petroleum. For 1980-2000, electric utility data also include small amounts of kerosene and jet fuel.

^c Fuel oil nos. 5 and 6. For 1973-1979, data are for steam plant use of petroleum. For 1980-2000, electric utility data also include a small amount of fuel oil no. 4.

^d Jet fuel, kerosene, other petroleum liquids, and waste oil.

^e Petroleum coke is converted from short tons to barrels by multiplying by 5.

^f Natural gas, plus a small amount of supplemental gaseous fuels.

^g Blast furnace gas, propane gas, and other manufactured and waste gases derived from fossil fuels.

^h Wood and wood-derived fuels.

ⁱ Municipal solid waste from biogenic sources, landfill gas, sludge waste, agricultural byproducts, and other biomass. Through 2000, also includes non-renewable waste (municipal solid waste from non-biogenic sources, and

tire-derived fuels).

^j Batteries, chemicals, hydrogen, pitch, purchased steam, sulfur, miscellaneous technologies, and, beginning in 2001, non-renewable waste (municipal solid waste from non-biogenic sources, and tire-derived fuels).

^k Through 1988, data are for electric utilities only. Beginning in 1989, data are for electric utilities and independent power producers.

NA=Not available. (s)=Less than 0.5 trillion Btu.

Notes: • Data are for fuels consumed to produce electricity. Data also include fuels consumed to produce useful thermal output at a small number of electric utility combined-heat-and-power (CHP) plants. • The electric power sector comprises electricity-only and combined-heat-and-power (CHP) plants within the NAICS 22 category whose primary business is to sell electricity, or electricity and heat, to the public. • Totals may not equal sum of components due to independent rounding. • Geographic coverage is the 50 States and the District of Columbia.

Web Page: See <http://www.eia.doe.gov/emeu/mer/elect.html> for all available data beginning in 1973.

Sources: See end of section.

Table 7.3c Consumption of Selected Combustible Fuels for Electricity Generation: Commercial and Industrial Sectors (Subset of Table 7.3a)

	Commercial Sector ^a				Industrial Sector ^b						
	Coal ^c	Petroleum ^d	Natural Gas ^e	Biomass	Coal ^c	Petroleum ^d	Natural Gas ^e	Other Gases ^g	Biomass		Other ⁱ
				Waste ^f					Wood ^h	Waste ^f	
Thousand Short Tons	Thousand Barrels	Billion Cubic Feet	Trillion Btu	Thousand Short Tons	Thousand Barrels	Billion Cubic Feet	Trillion Btu				
1989 Total	414	1,165	18	9	9,707	8,482	444	83	267	15	37
1990 Total	417	953	28	15	10,740	13,103	517	104	335	16	36
1995 Total	569	649	43	21	12,171	12,265	601	114	373	13	40
1996 Total	656	645	42	31	12,153	13,813	610	143	394	13	35
1997 Total	630	790	39	34	12,311	11,723	623	105	367	14	36
1998 Total	440	802	41	32	11,728	12,392	625	102	349	13	35
1999 Total	481	931	39	33	11,432	12,595	639	112	364	8	39
2000 Total	514	823	37	26	11,706	10,459	640	107	369	10	45
2001 Total	532	1,023	36	15	10,636	10,530	654	88	370	7	44
2002 Total	477	834	33	18	11,855	11,608	685	106	464	15	43
2003 Total	582	894	38	19	10,440	10,424	668	127	362	13	46
2004 Total	377	766	33	19	7,687	6,919	566	108	194	5	41
2005 Total	377	585	34	20	7,504	6,440	518	85	189	5	46
2006 Total	347	333	35	21	7,408	5,066	536	87	187	3	45
2007											
January	32	38	3	2	400	458	53	7	16	(s)	3
February	32	51	2	1	371	477	41	6	14	(s)	3
March	31	34	3	2	442	467	42	8	15	(s)	4
April	27	22	3	2	420	475	41	8	15	(s)	3
May	28	15	3	2	441	469	44	8	15	(s)	3
June	29	16	3	2	436	425	45	8	15	(s)	4
July	30	12	3	2	454	402	49	8	16	(s)	3
August	33	20	3	2	462	417	54	7	16	(s)	4
September	30	11	3	2	433	335	48	7	16	(s)	3
October	28	10	3	2	452	349	47	7	16	(s)	4
November	30	9	3	2	383	366	44	7	16	(s)	3
December	31	20	3	2	395	400	47	7	16	(s)	4
Total	361	258	34	19	5,089	5,041	554	88	188	4	41
2008											
January	32	22	3	2	424	347	47	7	16	(s)	2
February	28	14	3	2	389	294	41	6	15	(s)	2
March	24	10	3	2	478	285	41	7	15	(s)	2
April	27	8	2	2	458	252	39	6	15	(s)	2
May	28	9	2	2	480	230	41	6	15	(s)	2
June	33	15	2	2	483	299	42	7	16	(s)	2
July	35	15	3	2	525	283	46	8	16	(s)	3
August	32	10	3	2	505	285	46	8	16	(s)	2
September	31	10	3	2	497	321	34	6	15	(s)	2
October	28	9	2	1	476	271	41	5	15	(s)	2
November	28	12	2	2	382	237	37	5	15	(s)	2
December	32	18	3	2	395	364	38	5	15	(s)	2
Total	359	152	32	20	5,493	3,469	493	74	185	4	25
2009											
January	31	38	3	2	403	408	41	5	14	(s)	2
February	28	13	3	2	363	348	39	5	13	(s)	2
March	26	12	3	2	411	304	42	5	14	(s)	3
April	24	13	3	1	395	272	39	5	13	(s)	3
May	25	16	3	2	416	322	39	4	14	(s)	3
June	27	12	3	2	419	290	42	5	14	(s)	3
July	30	13	3	2	460	275	45	6	17	(s)	3
7-Month Total	192	117	18	12	2,867	2,218	288	36	99	2	19
2008 7-Month Total	208	92	18	12	3,237	1,991	296	46	109	2	16
2007 7-Month Total	209	188	19	11	2,964	3,174	314	53	108	3	24

^a Commercial combined-heat-and-power (CHP) and commercial electricity-only plants.

^b Industrial combined-heat-and-power (CHP) and industrial electricity-only plants.

^c Anthracite, bituminous coal, subbituminous coal, lignite, waste coal, and coal synfuel.

^d Distillate fuel oil, residual fuel oil, petroleum coke, jet fuel, kerosene, other petroleum, and waste oil.

^e Natural gas, plus a small amount of supplemental gaseous fuels.

^f Municipal solid waste from biogenic sources, landfill gas, sludge waste, agricultural byproducts, and other biomass. Through 2000, also includes non-renewable waste (municipal solid waste from non-biogenic sources, and tire-derived fuels).

^g Blast furnace gas, propane gas, and other manufactured and waste gases derived from fossil fuels.

^h Wood and wood-derived fuels.

ⁱ Batteries, chemicals, hydrogen, pitch, purchased steam, sulfur, miscellaneous

technologies, and, beginning in 2001, non-renewable waste (municipal solid waste from non-biogenic sources, and tire-derived fuels).

(s)=Less than 0.5 trillion Btu.

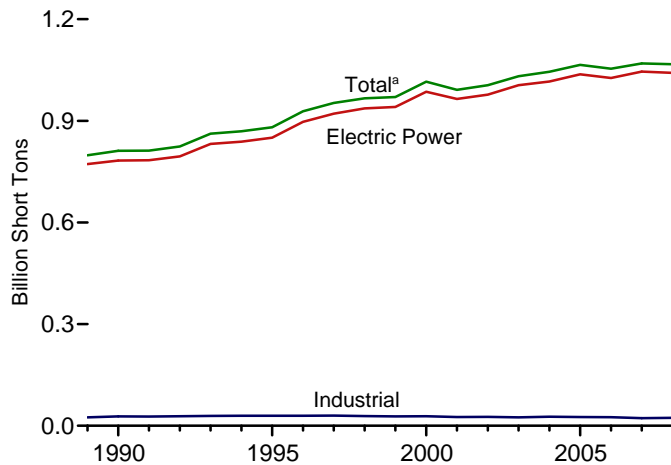
Notes: • Data are for fuels consumed to produce electricity. Through 1988, data are not available. • See Note, "Classification of Power Plants Into Energy-Use Sectors," at end of section. • Totals may not equal sum of components due to independent rounding. • Geographic coverage is the 50 States and the District of Columbia.

Web Page: See <http://www.eia.doe.gov/emeu/mer/elect.html> for all available data beginning in 1989.

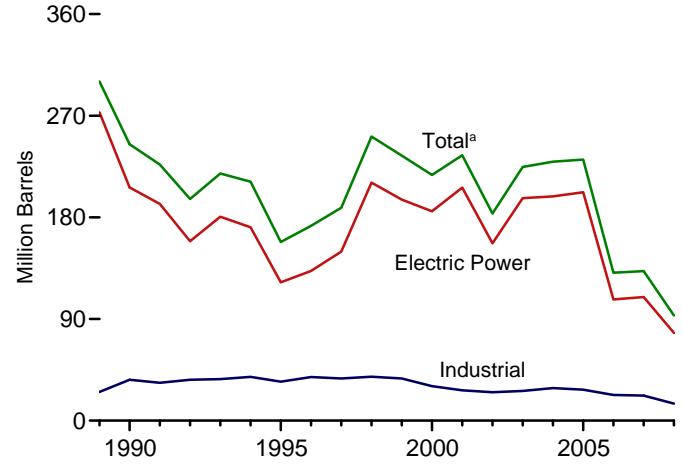
Sources: • **1989-1997:** Energy Information Administration (EIA), Form EIA-867, "Annual Nonutility Power Producer Report." • **1998-2000:** EIA, Form EIA-860B, "Annual Electric Generator Report—Nonutility." • **2001-2003:** EIA, Form EIA-906, "Power Plant Report." • **2004-2007:** EIA, Form EIA-906, "Power Plant Report," and Form EIA-920, "Combined Heat and Power Plant Report." • **2008 and 2009:** EIA, Form EIA-923, "Power Plant Operations Report."

Figure 7.4 Consumption of Selected Combustible Fuels for Electricity Generation and Useful Thermal Output

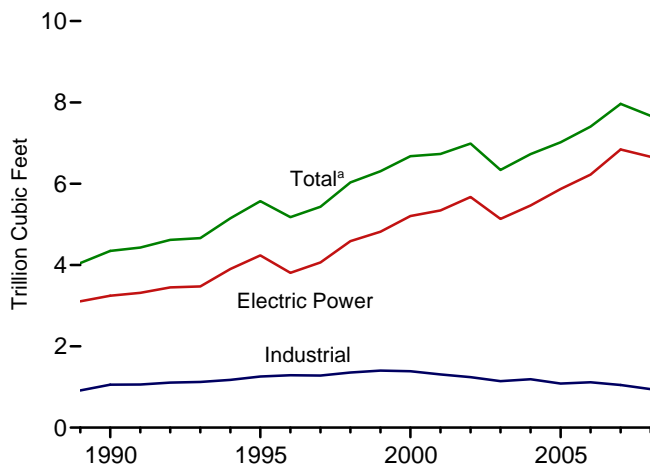
Coal by Sector, 1989-2008



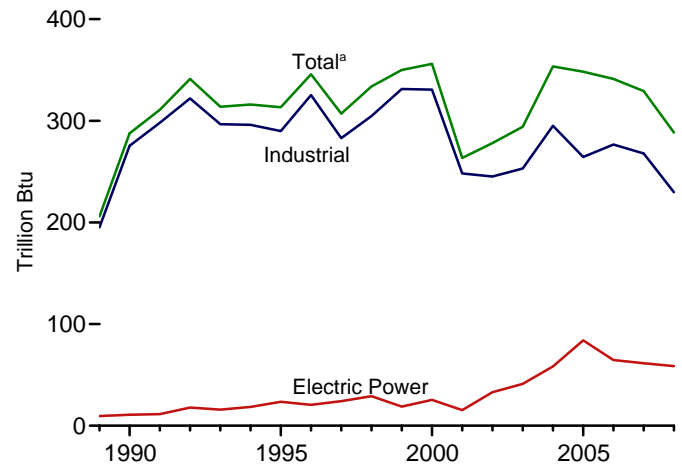
Petroleum by Sector, 1989-2008



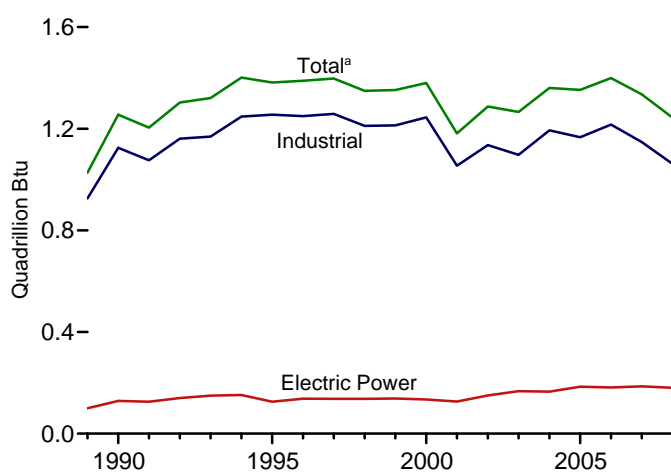
Natural Gas by Sector, 1989-2008



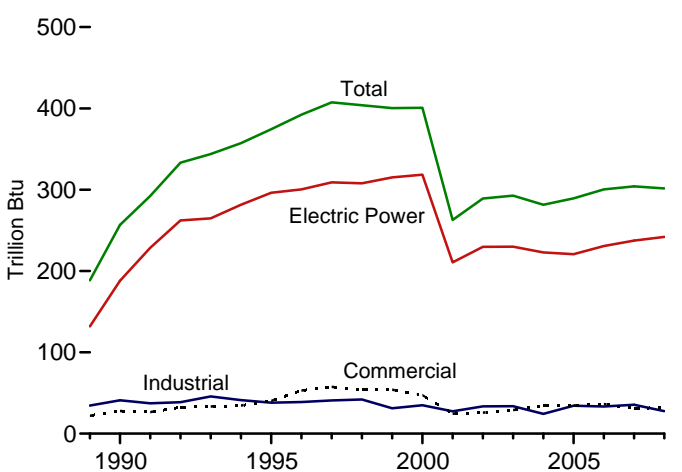
Other Gases^b by Sector, 1989-2008



Wood by Sector, 1989-2008



Waste by Sector, 1989-2008



^aIncludes commercial sector.

^bBlast furnace gas, propane gas, and other manufactured and waste gases derived from fossil fuels.

Web Page: <http://www.eia.doe.gov/emeu/mer/elect.html>.
Sources: Tables 7.4a, 7.4b, and 7.4c.

Table 7.4a Consumption of Combustible Fuels for Electricity Generation and Useful Thermal Output: Total (All Sectors) (Sum of Tables 7.4b and 7.4c)

	Coal ^a	Petroleum					Natural Gas ^f	Other Gases ^g	Biomass		Other ⁱ
		Distillate Fuel Oil ^b	Residual Fuel Oil ^c	Other Liquids ^d	Petroleum Coke ^e	Total ^e			Wood ^h	Waste ⁱ	
		Thousand Short Tons	Thousand Barrels			Thousand Short Tons			Thousand Barrels	Billion Cubic Feet	
1973 Total	389,212	47,058	513,190	NA	507	562,781	3,660	NA	1	2	NA
1975 Total	405,962	38,907	467,221	NA	70	506,479	3,158	NA	0	2	NA
1980 Total	569,274	29,051	391,163	NA	179	421,110	3,682	NA	3	2	NA
1985 Total	693,841	14,635	158,779	NA	231	174,571	3,044	NA	8	7	NA
1990 Total ^k	811,538	20,194	209,081	1,332	2,832	244,765	4,346	288	1,256	257	86
1995 Total	881,012	21,697	112,168	1,322	4,590	158,140	5,572	313	1,382	374	97
1996 Total	928,015	22,444	124,607	2,468	4,596	172,499	5,178	346	1,389	392	91
1997 Total	952,955	22,893	134,623	526	6,095	188,517	5,433	307	1,397	407	103
1998 Total	966,615	30,006	189,267	1,230	6,196	251,486	6,030	334	1,349	404	95
1999 Total	970,175	30,616	172,319	1,812	5,989	234,694	6,305	350	1,352	400	101
2000 Total	1,015,398	34,572	156,673	2,904	4,669	217,494	6,677	356	1,380	401	109
2001 Total	991,635	33,724	177,137	1,418	4,532	234,940	6,731	263	1,182	263	229
2002 Total	1,005,144	24,749	118,637	3,257	7,353	183,409	6,986	278	1,287	289	252
2003 Total	1,031,778	31,825	152,859	4,576	7,067	224,593	6,337	294	1,266	293	262
2004 Total	1,044,798	23,520	157,478	4,764	8,721	229,364	6,727	353	1,360	282	254
2005 Total	1,065,281	24,446	156,915	4,270	9,113	231,193	7,021	348	1,353	289	237
2006 Total	1,053,783	14,655	69,846	3,396	8,622	131,005	7,404	341	1,399	300	247
2007											
January	93,880	1,580	7,045	334	686	12,390	550	30	118	27	21
February	86,088	2,727	11,358	517	571	17,455	510	25	105	24	18
March	83,929	1,385	6,575	404	577	11,250	502	28	111	28	20
April	77,747	1,088	6,066	394	564	10,371	538	28	112	23	20
May	83,140	1,198	5,254	424	607	9,911	596	28	110	25	20
June	91,682	1,334	6,330	322	686	11,416	719	27	108	24	20
July	98,568	1,272	6,194	304	636	10,953	857	27	114	25	20
August	101,160	1,814	8,347	391	666	13,881	1,077	28	111	25	21
September	89,833	1,049	5,443	279	604	9,789	779	27	108	24	19
October	85,782	1,244	5,162	306	541	9,416	700	28	111	26	20
November	84,392	1,041	2,765	257	529	6,706	539	25	111	26	19
December	93,404	1,308	4,078	304	632	8,852	594	27	118	26	21
Total	1,069,606	17,042	74,616	4,237	7,299	132,389	7,962	329	1,336	304	239
2008											
January	96,257	1,841	3,897	381	632	9,278	623	25	108	26	15
February	88,349	1,255	3,129	295	566	7,512	519	24	102	24	14
March	85,215	934	2,774	303	505	6,537	546	27	99	28	16
April	79,041	923	3,041	231	534	6,864	544	25	102	25	15
May	83,520	928	3,178	223	520	6,930	558	26	103	25	15
June	91,656	1,463	5,275	282	595	9,996	748	26	104	26	16
July	100,235	1,109	4,335	208	544	8,370	872	28	109	26	16
August	97,654	928	3,702	204	547	7,572	853	28	109	25	16
September	87,825	1,002	4,389	266	524	8,275	676	22	103	24	15
October	82,553	785	2,675	186	581	6,550	631	22	105	23	15
November	83,184	842	3,022	190	498	6,542	539	18	101	25	14
December	91,788	1,390	4,406	383	520	8,778	559	19	100	26	15
Total	1,067,277	13,400	43,823	3,151	6,566	93,204	7,668	288	1,243	302	181
2009											
January	92,998	2,099	6,799	477	535	12,048	569	20	100	25	14
February	76,452	1,304	2,855	301	491	6,913	526	20	91	22	13
March	74,159	1,322	2,365	341	579	6,921	584	21	94	29	16
April	68,986	898	2,005	265	515	5,742	538	20	90	24	16
May	72,436	1,212	2,752	276	510	6,789	601	19	91	24	17
June	80,899	1,123	2,686	188	517	6,583	730	19	94	25	16
July	86,401	1,071	2,853	181	534	6,773	862	22	102	25	17
7-Month Total	552,331	9,030	22,315	2,029	3,679	51,769	4,410	141	661	174	108
2008 7-Month Total	624,274	8,453	25,628	1,923	3,897	55,487	4,409	180	726	179	107
2007 7-Month Total	615,035	10,586	48,822	2,699	4,328	83,745	4,273	193	778	177	139

^a Anthracite, bituminous coal, subbituminous coal, lignite, waste coal, and coal synfuel.

^b Fuel oil nos. 1, 2, and 4. Through 2000, electric utility data also include small amounts of kerosene and jet fuel.

^c Fuel oil nos. 5 and 6. Through 2000, electric utility data also include a small amount of fuel oil no. 4.

^d Jet fuel, kerosene, other petroleum liquids, and waste oil.

^e Petroleum coke is converted from short tons to barrels by multiplying by 5.

^f Natural gas, plus a small amount of supplemental gaseous fuels.

^g Blast furnace gas, propane gas, and other manufactured and waste gases derived from fossil fuels.

^h Wood and wood-derived fuels.

ⁱ Municipal solid waste from biogenic sources, landfill gas, sludge waste, agricultural byproducts, and other biomass. Through 2000, also includes non-renewable waste (municipal solid waste from non-biogenic sources, and

tire-derived fuels).

^j Batteries, chemicals, hydrogen, pitch, purchased steam, sulfur, miscellaneous technologies, and, beginning in 2001, non-renewable waste (municipal solid waste from non-biogenic sources, and tire-derived fuels).

^k Through 1988, data are for electric utilities only. Beginning in 1989, data are for electric utilities, independent power producers, commercial plants, and industrial plants.

NA=Not available.

Notes: • Data are for fuels consumed to produce electricity and useful thermal output. • Totals may not equal sum of components due to independent rounding.

• Geographic coverage is the 50 States and the District of Columbia.

Web Page: See <http://www.eia.doe.gov/emeu/mer/elect.html> for all available data beginning in 1973.

Sources: See sources for Tables 7.4b and 7.4c.

Table 7.4b Consumption of Combustible Fuels for Electricity Generation and Useful Thermal Output: Electric Power Sector (Subset of Table 7.4a)

	Coal ^a Thousand Short Tons	Petroleum					Natural Gas ^f Billion Cubic Feet	Other Gases ^g	Biomass		Other ^j
		Distillate Fuel Oil ^b Thousand Barrels	Residual Fuel Oil ^c Thousand Barrels	Other Liquids ^d Thousand Barrels	Petroleum Coke ^e Thousand Short Tons	Total ^e Thousand Barrels			Wood ^h Trillion Btu	Waste ⁱ Trillion Btu	
1973 Total	389,212	47,058	513,190	NA	507	562,781	3,660	NA	1	2	NA
1975 Total	405,962	38,907	467,221	NA	70	506,479	3,158	NA	(s)	2	NA
1980 Total	569,274	29,051	391,163	NA	179	421,110	3,682	NA	3	2	NA
1985 Total	693,841	14,635	158,779	NA	231	174,571	3,044	NA	8	7	NA
1990 Total ^k	782,567	16,567	184,915	26	1,008	206,550	3,245	11	129	188	(s)
1995 Total	850,230	18,553	90,023	499	2,674	122,447	4,237	24	125	296	2
1996 Total	896,921	18,780	99,951	653	2,642	132,593	3,807	20	138	300	2
1997 Total	921,364	18,989	113,669	152	3,372	149,668	4,065	24	137	309	1
1998 Total	936,619	23,300	166,528	431	4,102	210,769	4,588	29	137	308	2
1999 Total	940,922	24,058	152,493	544	3,735	195,769	4,820	19	138	315	1
2000 Total	985,821	30,016	138,513	454	3,275	185,358	5,206	25	134	318	1
2001 Total	964,433	29,274	159,504	377	3,427	206,291	5,342	15	126	211	113
2002 Total	977,507	21,876	104,773	1,267	5,816	156,996	5,672	33	150	230	143
2003 Total	1,005,116	27,632	138,279	2,026	5,799	196,932	5,135	41	167	230	140
2004 Total	1,016,268	19,107	139,816	2,713	7,372	198,498	5,464	58	165	223	138
2005 Total	1,037,485	19,675	139,409	2,685	8,083	202,184	5,869	84	185	221	123
2006 Total	1,026,636	12,646	57,345	1,870	7,101	107,365	6,222	65	182	231	125
2007											
January	91,686	1,408	5,633	199	559	10,035	448	6	19	20	11
February	84,026	2,499	9,495	426	442	14,630	425	5	15	17	9
March	81,803	1,235	5,164	277	448	8,914	416	5	15	20	10
April	75,751	962	4,936	190	437	8,274	453	5	15	18	10
May	81,140	1,000	4,425	187	474	7,984	507	5	14	20	10
June	89,699	1,211	5,531	175	547	9,652	628	5	15	20	10
July	96,548	1,176	5,534	161	486	9,303	761	5	16	21	11
August	99,086	1,684	7,570	230	505	12,009	969	5	16	21	11
September	87,922	955	4,822	194	471	8,325	683	5	15	20	10
October	83,810	1,105	4,554	196	421	7,960	604	6	15	20	10
November	82,393	928	2,163	166	398	5,246	448	5	15	21	10
December	91,276	1,164	3,259	192	496	7,098	498	6	16	21	11
Total	1,045,141	15,327	63,086	2,594	5,685	109,431	6,841	61	186	237	124
2008											
January	94,052	1,666	3,232	267	490	7,615	529	5	16	21	11
February	86,199	1,180	2,576	198	451	6,209	434	5	15	18	10
March	83,027	850	2,273	187	399	5,307	459	6	16	23	11
April	76,962	843	2,605	153	404	5,621	464	5	14	20	10
May	81,386	847	2,786	153	390	5,734	474	5	13	20	10
June	89,565	1,369	4,750	203	474	8,692	668	5	14	21	11
July	98,015	992	3,863	137	418	7,084	783	6	17	21	11
August	95,498	817	3,256	139	443	6,427	763	6	16	21	11
September	85,694	860	3,931	174	415	7,040	603	4	15	19	10
October	80,442	688	2,317	116	450	5,371	546	5	14	19	10
November	81,127	749	2,585	142	397	5,459	460	3	15	19	10
December	89,635	1,242	3,685	213	399	7,137	477	4	16	21	11
Total	1,041,603	12,101	37,860	2,081	5,131	77,695	6,661	59	181	242	126
2009											
January	90,887	1,898	5,871	356	407	10,157	483	4	16	19	10
February	74,507	1,068	2,327	218	373	5,477	449	4	14	18	9
March	72,140	1,213	1,996	218	471	5,781	499	4	14	22	10
April	67,240	757	1,691	160	413	4,673	455	4	12	19	10
May	70,704	1,015	2,225	198	416	5,516	519	5	13	20	11
June	79,089	947	2,398	127	416	5,552	646	5	15	20	11
July	84,493	891	2,581	136	426	5,741	775	5	16	21	11
7-Month Total	539,059	7,788	19,088	1,414	2,921	42,897	3,827	29	101	140	72
2008 7-Month Total	609,207	7,746	22,086	1,297	3,026	46,261	3,811	37	105	143	74
2007 7-Month Total	600,655	9,490	40,717	1,615	3,394	68,793	3,639	35	109	135	72

^a Anthracite, bituminous coal, subbituminous coal, lignite, waste coal, and coal synfuel.

^b Fuel oil nos. 1, 2, and 4. Through 2000, electric utility data also include small amounts of kerosene and jet fuel.

^c Fuel oil nos. 5 and 6. Through 2000, electric utility data also include a small amount of fuel oil no. 4.

^d Jet fuel, kerosene, other petroleum liquids, and waste oil.

^e Petroleum coke is converted from short tons to barrels by multiplying by 5.

^f Natural gas, plus a small amount of supplemental gaseous fuels.

^g Blast furnace gas, propane gas, and other manufactured and waste gases derived from fossil fuels.

^h Wood and wood-derived fuels.

ⁱ Municipal solid waste from biogenic sources, landfill gas, sludge waste, agricultural byproducts, and other biomass. Through 2000, also includes non-renewable waste (municipal solid waste from non-biogenic sources, and tire-derived fuels).

^j Batteries, chemicals, hydrogen, pitch, purchased steam, sulfur, miscellaneous technologies, and, beginning in 2001, non-renewable waste (municipal solid waste from non-biogenic sources, and tire-derived fuels).

^k Through 1988, data are for electric utilities only. Beginning in 1989, data are for electric utilities and independent power producers.

NA=Not available. (s)=Less than 0.5 trillion Btu.

Notes: • Data are for fuels consumed to produce electricity and useful thermal output. • The electric power sector comprises electricity-only and combined-heat-and-power (CHP) plants within the NAICS 22 category whose primary business is to sell electricity, or electricity and heat, to the public. • Totals may not equal sum of components due to independent rounding. • Geographic coverage is the 50 States and the District of Columbia.

Web Page: See <http://www.eia.doe.gov/emeu/mer/elect.html> for all available data beginning in 1973.

Sources: See end of section.

Table 7.4c Consumption of Selected Combustible Fuels for Electricity Generation and Useful Thermal Output: Commercial and Industrial Sectors (Subset of Table 7.4a)

	Commercial Sector ^a				Industrial Sector ^b						
	Coal ^c	Petroleum ^d	Natural Gas ^e	Biomass	Coal ^c	Petroleum ^d	Natural Gas ^e	Other Gases ^g	Biomass		Other ⁱ
				Waste ^f					Wood ^h	Waste ^f	
Thousand Short Tons	Thousand Barrels	Billion Cubic Feet	Trillion Btu	Thousand Short Tons	Thousand Barrels	Billion Cubic Feet	Trillion Btu				
1989 Total	1,125	1,967	30	22	24,867	25,444	914	195	926	35	85
1990 Total	1,191	2,056	46	28	27,781	36,159	1,055	275	1,125	41	86
1995 Total	1,419	1,245	78	40	29,363	34,448	1,258	290	1,255	38	95
1996 Total	1,660	1,246	82	53	29,434	38,661	1,289	325	1,249	39	89
1997 Total	1,738	1,584	87	58	29,853	37,265	1,282	283	1,259	41	102
1998 Total	1,443	1,807	87	54	28,553	38,910	1,355	305	1,211	42	93
1999 Total	1,490	1,613	84	54	27,763	37,312	1,401	331	1,213	31	99
2000 Total	1,547	1,615	85	47	28,031	30,520	1,386	331	1,244	35	108
2001 Total	1,448	1,832	79	25	25,755	26,817	1,310	248	1,054	27	101
2002 Total	1,405	1,250	74	26	26,232	25,163	1,240	245	1,136	34	92
2003 Total	1,816	1,449	58	29	24,846	26,212	1,144	253	1,097	34	103
2004 Total	1,917	2,009	72	34	26,613	28,857	1,191	295	1,193	24	94
2005 Total	1,922	1,630	68	34	25,875	27,380	1,084	264	1,166	34	94
2006 Total	1,886	935	68	36	25,262	22,706	1,115	277	1,216	33	102
2007											
January	191	113	6	3	2,003	2,242	96	24	99	5	9
February	186	198	5	2	1,876	2,627	79	20	90	5	8
March	171	103	5	3	1,956	2,233	81	23	95	5	8
April	146	58	5	3	1,850	2,039	80	23	96	3	8
May	143	26	5	3	1,857	1,901	84	23	96	2	8
June	137	37	6	3	1,845	1,726	85	22	93	2	8
July	151	23	7	3	1,868	1,627	90	22	98	2	8
August	162	41	7	3	1,912	1,832	101	23	95	2	9
September	145	28	6	3	1,765	1,436	89	23	92	2	8
October	142	25	6	3	1,830	1,431	89	22	96	3	9
November	169	24	6	3	1,830	1,435	85	20	95	3	8
December	183	75	6	3	1,945	1,679	90	22	102	3	8
Total	1,927	752	70	31	22,537	22,207	1,050	268	1,148	36	98
2008											
January	196	56	6	3	2,009	1,607	88	20	91	2	3
February	184	41	6	3	1,966	1,262	79	19	87	3	3
March	188	30	6	3	2,000	1,200	81	21	83	2	3
April	156	24	5	3	1,924	1,219	74	19	88	2	3
May	156	18	4	3	1,978	1,178	79	20	89	2	3
June	176	33	4	3	1,915	1,272	76	20	89	2	3
July	178	33	5	3	2,041	1,253	84	22	92	2	4
August	174	21	5	3	1,982	1,124	85	22	92	2	4
September	166	21	5	2	1,965	1,215	68	18	88	2	3
October	162	29	5	2	1,950	1,149	80	17	91	2	3
November	176	33	5	3	1,882	1,050	75	15	86	2	2
December	198	57	5	3	1,955	1,584	77	15	84	2	3
Total	2,109	396	61	32	23,566	15,113	946	230	1,062	28	38
2009											
January	202	96	6	3	1,909	1,795	80	16	84	2	3
February	176	34	5	3	1,769	1,402	72	16	76	2	3
March	170	31	5	4	1,849	1,109	80	17	81	3	4
April	135	24	5	2	1,611	1,044	78	16	78	2	4
May	126	27	5	3	1,606	1,246	77	15	77	2	4
June	138	22	5	3	1,672	1,009	79	15	78	2	4
July	141	24	5	2	1,768	1,008	82	18	86	2	4
7-Month Total	1,088	257	35	19	12,185	8,615	549	112	560	15	26
2008 7-Month Total	1,234	234	36	19	13,833	8,991	562	142	620	17	23
2007 7-Month Total	1,125	558	39	18	13,255	14,394	595	158	668	24	57

^a Commercial combined-heat-and-power (CHP) and commercial electricity-only plants.

^b Industrial combined-heat-and-power (CHP) and industrial electricity-only plants.

^c Anthracite, bituminous coal, subbituminous coal, lignite, waste coal, and coal synfuel.

^d Distillate fuel oil, residual fuel oil, petroleum coke, jet fuel, kerosene, other petroleum, and waste oil.

^e Natural gas, plus a small amount of supplemental gaseous fuels.

^f Municipal solid waste from biogenic sources, landfill gas, sludge waste, agricultural byproducts, and other biomass. Through 2000, also includes non-renewable waste (municipal solid waste from non-biogenic sources, and tire-derived fuels).

^g Blast furnace gas, propane gas, and other manufactured and waste gases derived from fossil fuels.

^h Wood and wood-derived fuels.

ⁱ Batteries, chemicals, hydrogen, pitch, purchased steam, sulfur, miscellaneous technologies, and, beginning in 2001, non-renewable waste (municipal solid waste from non-biogenic sources, and tire-derived fuels).

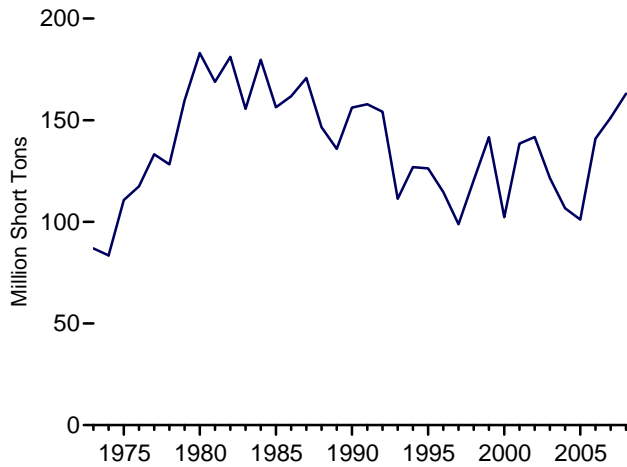
Notes: • Data are for fuels consumed to produce electricity and useful thermal output. Through 1988, data are not available. • See Note, "Classification of Power Plants Into Energy-Use Sectors," at end of section. • Totals may not equal sum of components due to independent rounding. • Geographic coverage is the 50 States and the District of Columbia.

Web Page: See <http://www.eia.doe.gov/emeu/mer/elect.html> for all available data beginning in 1989.

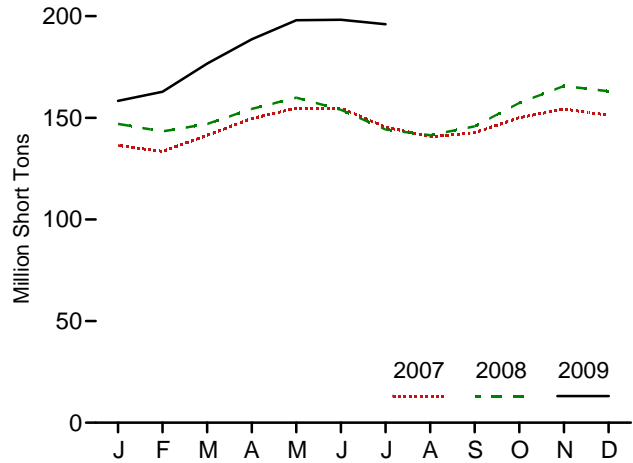
Sources: • **1989-1997:** Energy Information Administration (EIA), Form EIA-867, "Annual Nonutility Power Producer Report." • **1998-2000:** EIA, Form EIA-860B, "Annual Electric Generator Report—Nonutility." • **2001-2003:** EIA, Form EIA-906, "Power Plant Report." • **2004-2007:** EIA, Form EIA-906, "Power Plant Report," and Form EIA-920, "Combined Heat and Power Plant Report." • **2008 and 2009:** EIA, Form EIA-923, "Power Plant Operations Report."

Figure 7.5 Stocks of Coal and Petroleum: Electric Power Sector

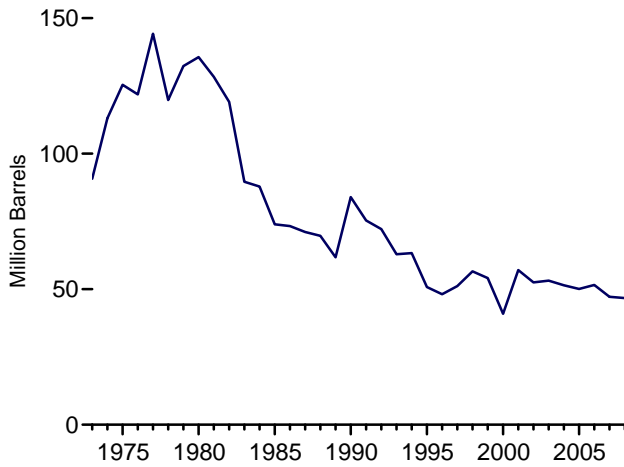
Coal, 1973-2008



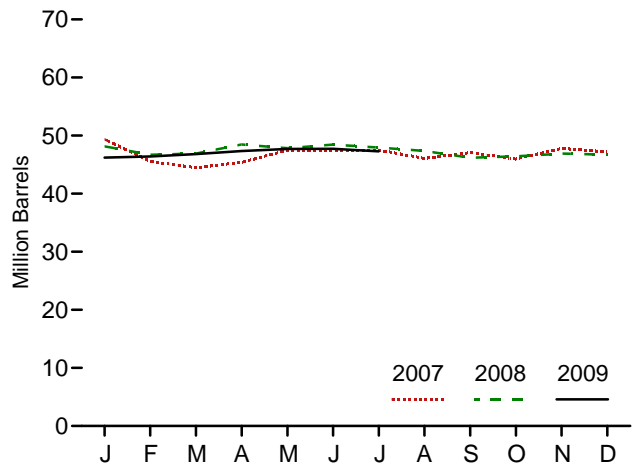
Coal, Monthly



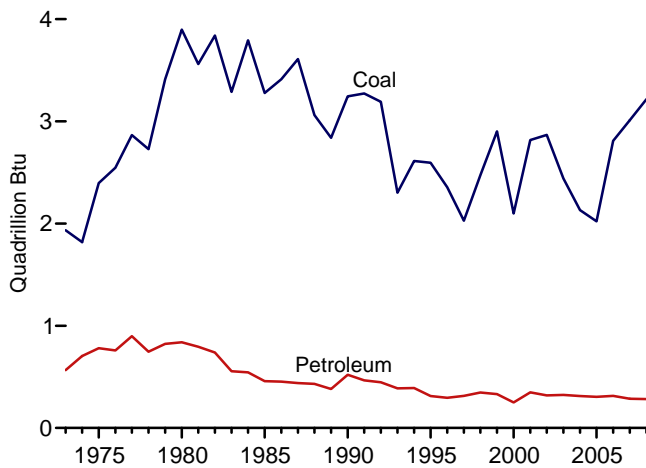
Total Petroleum, 1973-2008



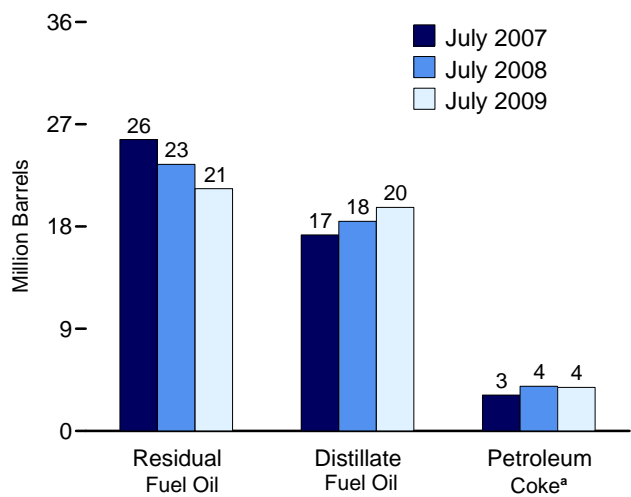
Total Petroleum, Monthly



Coal and Petroleum Stocks, 1973-2008



Petroleum by Major Type, End of Month



^aConverted from short tons to barrels by multiplying by five.
 Web Page: <http://www.eia.doe.gov/emeu/mer/elect.html>.
 Sources: Tables 7.5, A1, and A5 (column 6).

Table 7.5 Stocks of Coal and Petroleum: Electric Power Sector

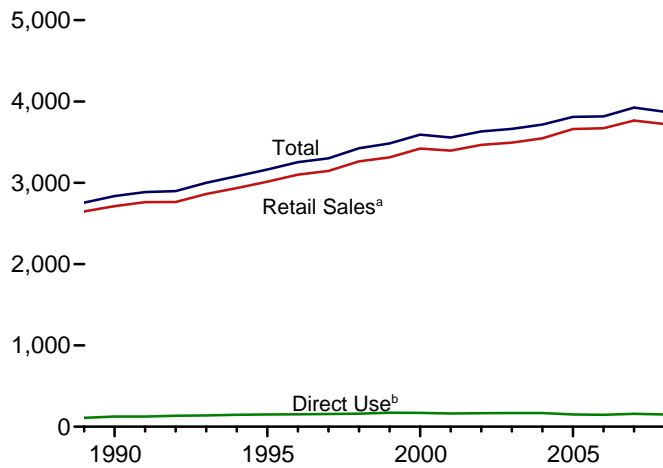
	Coal ^a	Petroleum				
		Distillate Fuel Oil ^b	Residual Fuel Oil ^c	Other Liquids ^d	Petroleum Coke ^e	Total ^e
	Thousand Short Tons	Thousand Barrels			Thousand Short Tons	Thousand Barrels
1973 Year	86,967	10,095	79,121	NA	312	90,776
1975 Year	110,724	16,432	108,825	NA	31	125,413
1980 Year	183,010	30,023	105,351	NA	52	135,635
1985 Year	156,376	16,386	57,304	NA	49	73,933
1990 Year	156,166	16,471	67,030	NA	94	83,970
1995 Year	126,304	15,392	35,102	NA	65	50,821
1996 Year	114,623	15,216	32,473	NA	91	48,146
1997 Year	98,826	15,456	33,336	NA	469	51,138
1998 Year	120,501	16,343	37,451	NA	559	56,591
1999 Year ^f	141,604	17,995	34,256	NA	372	54,109
2000 Year	102,296	15,127	24,748	NA	211	40,932
2001 Year	138,496	20,486	34,594	NA	390	57,031
2002 Year	141,714	17,413	25,723	800	1,711	52,490
2003 Year	121,567	19,153	25,820	779	1,484	53,170
2004 Year	106,669	19,275	26,596	879	937	51,434
2005 Year	101,137	18,778	27,624	1,012	530	50,062
2006 Year	140,964	18,013	28,823	1,380	674	51,583
2007 January	136,377	17,306	27,138	1,406	699	49,346
February	133,468	17,036	23,516	1,379	723	45,546
March	141,389	16,876	23,089	1,336	636	44,480
April	149,657	16,789	23,918	1,338	669	45,389
May	154,735	16,782	26,022	1,379	660	47,481
June	154,812	17,109	26,240	1,384	543	47,445
July	145,450	17,264	25,650	1,433	631	47,504
August	140,668	17,276	24,513	1,488	562	46,087
September	142,666	17,590	25,272	1,484	543	47,059
October	150,075	17,920	23,809	1,521	545	45,973
November	154,292	18,261	24,941	1,515	612	47,777
December	151,221	18,395	24,136	1,902	554	47,203
2008 January	146,966	18,722	24,136	2,008	654	48,139
February	143,309	18,464	23,542	1,858	571	46,719
March	147,002	18,381	23,115	2,065	668	46,901
April	154,409	18,256	24,470	2,077	731	48,459
May	159,926	18,337	23,564	2,088	767	47,825
June	153,915	18,431	24,254	2,093	730	48,430
July	144,231	18,452	23,471	2,083	789	47,950
August	141,405	18,261	23,354	2,074	732	47,351
September	145,835	18,264	22,324	2,053	710	46,191
October	157,334	18,380	22,450	2,105	698	46,425
November	165,654	18,817	21,958	2,116	803	46,904
December	163,056	18,876	21,725	2,135	794	46,708
2009 January	158,358	18,612	21,449	2,142	805	46,225
February	162,799	18,544	21,682	2,256	787	46,419
March	176,639	18,667	22,020	2,297	766	46,816
April	188,618	19,439	21,842	2,316	749	47,342
May	197,972	19,433	21,737	2,374	833	47,708
June	198,215	19,482	21,820	2,431	801	47,738
July	196,052	19,683	21,328	2,450	767	47,298

^a Anthracite, bituminous coal, subbituminous coal, and lignite.
^b Fuel oil nos. 1, 2 and 4. For 1973-1979, data are for gas turbine and internal combustion plant stocks of petroleum. For 1980-2000, electric utility data also include small amounts of kerosene and jet fuel.
^c Fuel oil nos. 5 and 6. For 1973-1979, data are for steam plant stocks of petroleum. For 1980-2000, electric utility data also include a small amount of fuel oil no. 4.
^d Jet fuel and kerosene. Through 2003, data also include a small amount of waste oil.
^e Petroleum coke is converted from short tons to barrels by multiplying by 5.
^f Through 1998, data are for electric utilities only. Beginning in 1999, data are for electric utilities and independent power producers.
 NA=Not available.
 Notes: • The electric power sector comprises electricity-only and combined-heat-and-power (CHP) plants within the NAICS 22 category whose primary business is to sell electricity, or electricity and heat, to the public. • Stocks

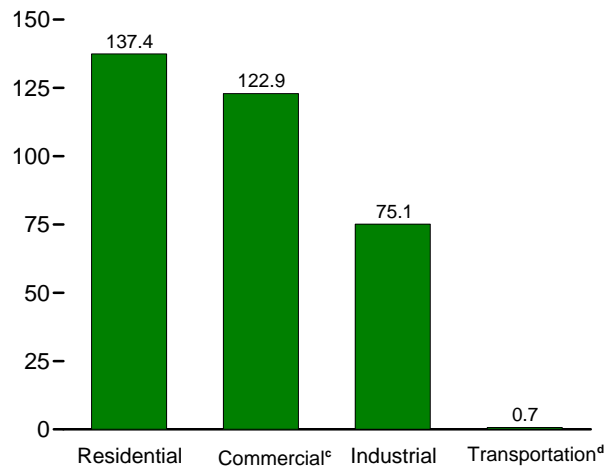
are at end of period. • Totals may not equal sum of components due to independent rounding. • Geographic coverage is the 50 States and the District of Columbia.
 Web Page: See <http://www.eia.doe.gov/emeu/mer/elect.html> for all available data beginning in 1973.
 Sources: • **1973-September 1977:** Federal Power Commission, Form FPC-4, "Monthly Power Plant Report." • **October 1977-1981:** Federal Energy Regulatory Commission, Form FPC-4, "Monthly Power Plant Report." • **1982-1988:** Energy Information Administration (EIA), Form EIA-759, "Monthly Power Plant Report." • **1989-1997:** EIA, Form EIA-759, "Monthly Power Plant Report," and Form EIA-867, "Annual Nonutility Power Producer Report." • **1998-2000:** EIA, Form EIA-759, "Monthly Power Plant Report," and Form EIA-860B, "Annual Electric Generator Report—Nonutility." • **2001-2003:** Form EIA-906, "Power Plant Report"; • **2004-2007:** EIA, Form EIA-906, "Power Plant Report," and Form EIA-920, "Combined Heat and Power Plant Report." • **2008 and 2009:** EIA, Form EIA-923, "Power Plant Operations Report."

Figure 7.6 Electricity End Use
(Billion Kilowatthours)

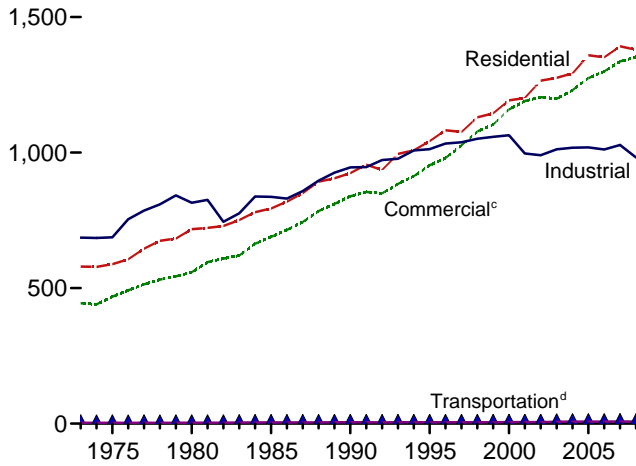
Electricity End Use Overview, 1989-2008



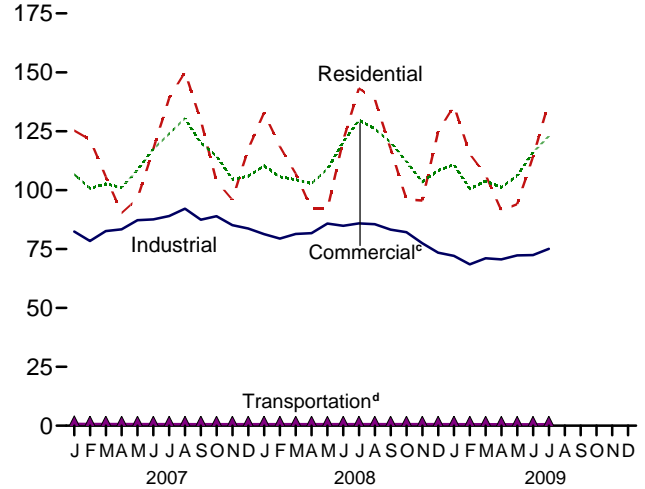
Retail Sales^a by Sector, July 2009



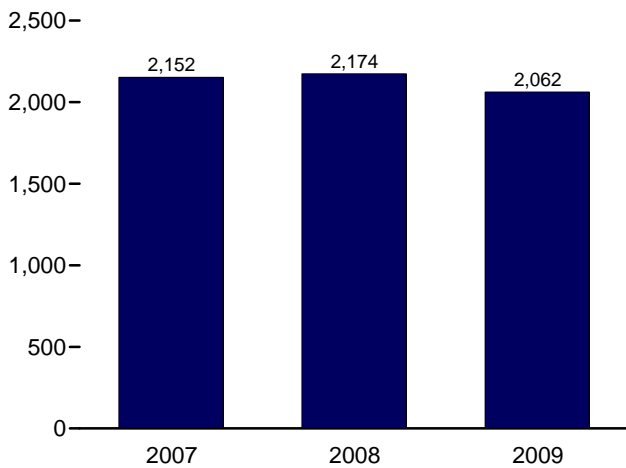
Retail Sales^a by Sector, 1973-2008



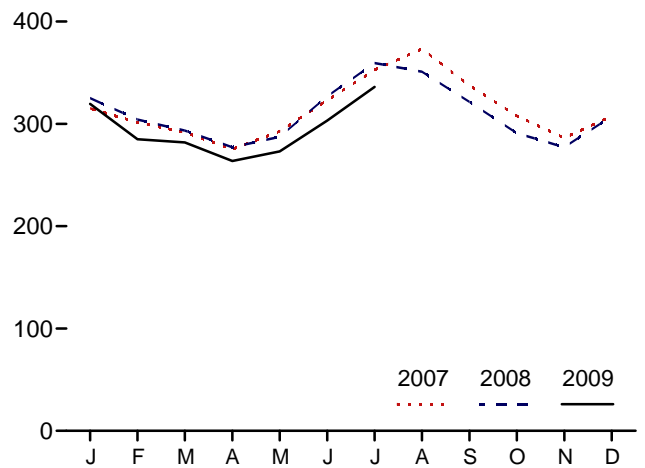
Retail Sales^a by Sector, Monthly



Retail Sales^a Total, January-July



Retail Sales^a Total, Monthly



^aElectricity retail sales to ultimate customers reported by electric utilities and other energy service providers.

^bSee "Direct Use" in Glossary.

^cCommercial sector, including public street and highway lighting, interde-

partmental sales, and other sales to public authorities.

^dTransportation sector, including sales to railroads and railways.

Web Page: <http://www.eia.doe.gov/emeu/mer/elect.html>.

Source: Table 7.6.

Table 7.6 Electricity End Use
(Million Kilowatthours)

	Retail Sales ^a					Direct Use ^f	Total End Use ^g	Discontinued Retail Sales Series	
	Residential	Commercial ^b	Industrial ^c	Transportation ^d	Total Retail Sales ^e			Commercial (Old) ^h	Other (Old) ⁱ
1973 Total	579,231	E 444,505	686,085	E 3,087	1,712,909	NA	1,712,909	388,266	59,326
1975 Total	588,140	E 468,296	687,680	E 2,974	1,747,091	NA	1,747,091	403,049	68,222
1980 Total	717,495	558,643	815,067	3,244	2,094,449	NA	2,094,449	488,155	73,732
1985 Total	793,934	689,121	836,772	4,147	2,323,974	NA	2,323,974	605,989	87,279
1990 Total	924,019	838,263	945,522	4,751	2,712,555	124,529	2,837,084	751,027	91,988
1995 Total	1,042,501	953,117	1,012,693	4,975	3,013,287	150,677	3,163,963	862,685	95,407
1996 Total	1,082,512	980,061	1,033,631	4,923	3,101,127	152,638	3,253,765	887,445	97,539
1997 Total	1,075,880	1,026,626	1,038,197	4,907	3,145,610	156,239	3,301,849	928,633	102,901
1998 Total	1,130,109	1,077,957	1,051,203	4,962	3,264,231	160,866	3,425,097	979,401	103,518
1999 Total	1,144,923	1,103,821	1,058,217	5,126	3,312,087	171,629	3,483,716	1,001,996	106,952
2000 Total	1,192,446	1,159,347	1,064,239	5,382	3,421,414	170,943	3,592,357	1,055,232	109,496
2001 Total	1,201,607	1,190,518	996,609	5,724	3,394,458	162,649	3,557,107	1,083,069	113,174
2002 Total	1,265,180	1,204,531	990,238	5,517	3,465,466	166,184	3,631,650	1,104,497	105,552
2003 Total	1,275,824	1,198,728	1,012,373	6,810	3,493,734	168,295	3,662,029	--	--
2004 Total	1,291,982	1,230,425	1,017,850	7,224	3,547,479	168,470	3,715,949	--	--
2005 Total	1,359,227	1,275,079	1,019,156	7,506	3,660,969	150,016	3,810,984	--	--
2006 Total	1,351,520	1,299,744	1,011,298	7,358	3,669,919	146,927	3,816,845	--	--
2007 January	125,286	106,667	82,384	766	315,104	E 14,266	329,370	--	--
February	121,464	100,756	78,392	719	301,331	E 12,012	313,344	--	--
March	105,695	102,640	82,582	743	291,660	E 12,770	304,431	--	--
April	90,282	101,051	83,361	646	275,341	E 12,491	287,831	--	--
May	96,389	108,559	87,241	611	292,800	E 13,019	305,819	--	--
June	117,418	117,352	87,572	665	323,007	E 13,060	336,067	--	--
July	139,027	123,923	89,017	675	352,642	E 14,003	366,645	--	--
August	150,101	130,475	92,115	673	373,365	E 14,654	388,019	--	--
September	129,512	119,898	87,428	687	337,525	E 13,339	350,864	--	--
October	103,754	114,481	88,896	652	307,783	E 13,449	321,231	--	--
November	95,905	104,603	85,118	673	286,299	E 12,828	299,127	--	--
December	117,408	105,909	83,725	663	307,704	E 13,363	321,067	--	--
Total	1,392,241	1,336,315	1,027,832	8,173	3,764,561	159,254	3,923,814	--	--
2008 January	132,860	110,332	81,331	710	325,234	E 13,758	338,992	--	--
February	118,503	105,615	79,428	656	304,202	E 12,335	316,536	--	--
March	107,007	104,469	81,372	635	293,483	E 12,804	306,286	--	--
April	91,979	102,796	81,711	614	277,100	E 12,058	289,158	--	--
May	91,995	108,926	85,817	595	287,332	E 12,548	299,880	--	--
June	121,093	120,349	84,855	622	326,919	E 13,021	339,940	--	--
July	143,203	129,661	85,846	644	359,355	E 14,018	373,373	--	--
August	138,699	126,088	85,535	639	350,961	E 13,791	364,752	--	--
September	117,581	120,231	83,200	622	321,634	E 11,459	333,093	--	--
October	96,051	112,147	82,117	629	290,943	E 12,210	303,153	--	--
November	95,574	103,461	77,472	616	277,123	E 11,323	288,446	--	--
December	124,764	108,379	73,464	669	307,276	E 11,711	318,987	--	--
Total	1,379,307	1,352,453	982,150	7,652	3,721,562	E 151,035	3,872,598	--	--
2009 January	135,787	110,869	72,116	735	319,507	E 12,139	331,646	--	--
February	115,318	100,540	68,499	636	284,993	E 11,332	296,325	--	--
March	106,368	103,818	71,062	652	281,900	E 12,194	294,094	--	--
April	91,305	101,136	70,618	589	263,648	E 11,370	275,018	--	--
May	94,027	106,200	72,319	577	273,124	E 11,574	284,697	--	--
June	114,115	115,946	72,432	602	303,095	E 12,121	315,216	--	--
July	137,443	122,889	75,096	653	336,081	E 12,950	349,031	--	--
7-Month Total	794,363	761,398	502,143	4,443	2,062,347	E 83,681	2,146,028	--	--
2008 7-Month Total	806,639	782,148	580,361	4,476	2,173,624	E 90,542	2,264,165	--	--
2007 7-Month Total	795,561	760,949	590,551	4,825	2,151,885	E 91,621	2,243,506	--	--

^a Electricity retail sales to ultimate customers reported by electric utilities and, beginning in 1996, other energy service providers.

^b Commercial sector, including public street and highway lighting, interdepartmental sales, and other sales to public authorities.

^c Industrial sector. Through 2002, excludes agriculture and irrigation; beginning in 2003, includes agriculture and irrigation.

^d Transportation sector, including sales to railroads and railways.

^e The sum of "Residential," "Commercial," "Industrial," and "Transportation."

^f Use of electricity that is 1) self-generated, 2) produced by either the same entity that consumes the power or an affiliate, and 3) used in direct support of a service or industrial process located within the same facility or group of facilities that house the generating equipment. Direct use is exclusive of station use.

^g The sum of "Total Retail Sales" and "Direct Use."

^h "Commercial (Old)" is a discontinued series—data are for the commercial sector, excluding public street and highway lighting, interdepartmental sales, and other sales to public authorities.

ⁱ "Other (Old)" is a discontinued series—data are for public street and highway lighting, interdepartmental sales, other sales to public authorities, agriculture and irrigation, and transportation including railroads and railways.

E=Estimate. NA=Not available. --=Not applicable.

Notes: • Totals may not equal sum of components due to independent rounding. • Geographic coverage is the 50 States and the District of Columbia.

Web Page: See <http://www.eia.doe.gov/emeu/mer/elect.html> for all available data beginning in 1973.

Sources: See end of section.

Electricity

Note. Classification of Power Plants Into Energy-Use Sectors. The Energy Information Administration (EIA) classifies power plants (both electricity-only and combined-heat-and-power plants) into energy-use sectors based on the North American Industry Classification System (NAICS), which replaced the Standard Industrial Classification (SIC) system in 1997. Plants with a NAICS code of 22 are assigned to the Electric Power Sector. Those with NAICS codes beginning with 11 (agriculture, forestry, fishing, and hunting); 21 (mining, including oil and gas extraction); 23 (construction); 31–33 (manufacturing); 2212 (natural gas distribution); and 22131 (water supply and irrigation systems) are assigned to the Industrial Sector. Those with all other codes are assigned to the Commercial Sector. Form EIA-860, “Annual Electric Generator Report,” asks respondents to indicate the primary purpose of the facility by assigning a NAICS code from the list at:

<http://www.eia.doe.gov/cneaf/electricity/forms/eia860/eia860.doc>.

Table 7.1 Sources

Net Generation, Electric Power Sector

Table 7.2b.

Net Generation, Commercial and Industrial Sectors

Table 7.2c.

Imports and Exports, Electricity Trade With Canada and Mexico, 1973–1989

1973–September 1977: Unpublished Federal Power Commission data.

October 1977–1980: Unpublished Economic Regulatory Administration (ERA) data.

1981: Department of Energy (DOE), Office of Energy Emergency Operations, “Report on Electric Energy Exchanges with Canada and Mexico for Calendar Year 1981,” April 1982 (revised June 1982).

1982 and 1983: DOE, ERA, *Electricity Exchanges Across International Borders*.

1984–1986: DOE, ERA, *Electricity Transactions Across International Borders*.

1987 and 1988: DOE, ERA, Form ERA-781R, “Annual Report of International Electrical Export/Import Data.”

1989: DOE, Fossil Energy, Form FE-781R, “Annual Report of International Electrical Export/Import Data.”

Imports and Exports, Electricity Trade with Canada, 1990 Forward

National Energy Board of Canada, data for total sales (firm and interruptible; which exclude non-revenue, inadvertent, and service) from Canada to the United States, and data for total purchases (which exclude non-revenue, inadvertent,

and service) by Canada from the United States.

Imports and Exports, Electricity Trade with Mexico, 1990 Forward

DOE, Fossil Energy, Office of Fuels Programs, Form FE-781R, “Annual Report of International Electrical Export/Import Data.” For 2001 forward, data from the California Independent System Operator were used in combination with the Form FE-781R values to estimate electricity trade with Mexico.

T&D Losses and Unaccounted for

Calculated as the sum of total net generation and imports minus end use and exports.

End Use

Table 7.6.

Table 7.2b Sources

1973–September 1977: Federal Power Commission, Form FPC-4, “Monthly Power Plant Report.”

October 1977–1981: Federal Energy Regulatory Commission, Form FPC-4, “Monthly Power Plant Report.”

1982–1988: Energy Information Administration (EIA), Form EIA-759, “Monthly Power Plant Report.”

1989–1997: EIA, Form EIA-759, “Monthly Power Plant Report,” and Form EIA-867, “Annual Nonutility Power Producer Report.”

1998–2000: EIA, Form EIA-759, “Monthly Power Plant Report,” and Form EIA-860B, “Annual Electric Generator Report–Nonutility.”

2001–2003: EIA, Form EIA-906, “Power Plant Report.”

2004–2007: EIA, Form EIA-906, “Power Plant Report,” and Form EIA-920, “Combined Heat and Power Plant Report.”

2008 and 2009: EIA, Form EIA-923, “Power Plant Operations Report.”

Table 7.2c Sources

Industrial Sector, Hydroelectric Power, 1973–1988

1973–September 1977: Federal Power Commission (FPC), Form FPC-4, “Monthly Power Plant Report,” for plants with generating capacity exceeding 10 megawatts, and FPC, Form FPC-12C, “Industrial Electric Generating Capacity,” for all other plants.

October 1977–1978: Federal Energy Regulatory Commission (FERC), Form FPC-4, “Monthly Power Plant Report,” for plants with generating capacity exceeding 10 megawatts, and FERC, Form FPC-12C, “Industrial Electric Generating Capacity,” for all other plants.

1979: FERC, Form FPC-4, “Monthly Power Plant Report,” for plants with generating capacity exceeding 10 megawatts, and Energy Information Administration (EIA) estimates for all other plants.

1980–1988: Estimated by EIA as the average generation over the 6-year period of 1974–1979.

All Data, 1989 Forward

1989–1997: EIA, Form EIA-867, “Annual Nonutility Power Producer Report.”

1998–2000: EIA, Form EIA-860B, “Annual Electric Generator Report—Nonutility.”

2001–2003: EIA, Form EIA-906, “Power Plant Report.”

2004–2007: EIA, Form EIA-906, “Power Plant Report,” and Form EIA-920, “Combined Heat and Power Plant Report.”

2008 and 2009: EIA, Form EIA-923, “Power Plant Operations Report.”

Table 7.3b Sources

1973–September 1977: Federal Power Commission, Form FPC-4, “Monthly Power Plant Report.”

October 1977–1981: Federal Energy Regulatory Commission, Form FPC-4, “Monthly Power Plant Report.”

1982–1988: Energy Information Administration (EIA), Form EIA-759, “Monthly Power Plant Report.”

1989–1997: EIA, Form EIA-759, “Monthly Power Plant Report,” and Form EIA-867, “Annual Nonutility Power Producer Report.”

1998–2000: EIA, Form EIA-759, “Monthly Power Plant Report,” and Form EIA-860B, “Annual Electric Generator Report—Nonutility.”

2001–2003: EIA, Form EIA-906, “Power Plant Report.”

2004–2007: EIA, Form EIA-906, “Power Plant Report,” and Form EIA-920, “Combined Heat and Power Plant Report.”

2008 and 2009: EIA, Form EIA-923, “Power Plant Operations Report.”

Table 7.4b Sources

1973–September 1977: Federal Power Commission, Form FPC-4, “Monthly Power Plant Report.”

October 1977–1981: Federal Energy Regulatory Commission, Form FPC-4, “Monthly Power Plant Report.”

1982–1988: Energy Information Administration (EIA), Form EIA-759, “Monthly Power Plant Report.”

1989–1997: EIA, Form EIA-759, “Monthly Power Plant Report,” and Form EIA-867, “Annual Nonutility Power Producer Report.”

1998–2000: EIA, Form EIA-759, “Monthly Power Plant Report,” and Form EIA-860B, “Annual Electric Generator Report—Nonutility.”

2001–2003: EIA, Form EIA-906, “Power Plant Report.”

2004–2007: EIA, Form EIA-906, “Power Plant Report,” and Form EIA-920, “Combined Heat and Power Plant Report.”

2008 and 2009: EIA, Form EIA-923, “Power Plant Operations Report.”

Table 7.6 Sources

Retail Sales, Residential and Industrial

1973–September 1977: Federal Power Commission, Form FPC-5, “Monthly Statement of Electric Operating Revenue and Income.”

October 1977–February 1980: Federal Energy Regulatory Commission (FERC), Form FPC-5, “Monthly Statement of Electric Operating Revenue and Income.”

March 1980–1982: FERC, Form FPC-5, “Electric Utility Company Monthly Statement.”

1983: Energy Information Administration (EIA), Form EIA-826, “Electric Utility Company Monthly Statement.”

1984–1993: EIA, Form EIA-861, “Annual Electric Utility Report.”

1994 forward: EIA, *Electric Power Monthly*, October 2009, Table 5.1.

Retail Sales, Commercial

1973–2002: Estimated by EIA as the sum of “Commercial (Old)” and the non-transportation portion of “Other (Old).” See estimation methodology at

http://www.eia.doe.gov/emeu/states/sep_use/notes/use_elec.pdf.

2003 forward: EIA, *Electric Power Monthly*, October 2009, Table 5.1.

Retail Sales, Transportation

1973–2002: Estimated by EIA as the transportation portion of “Other (Old).” See estimation methodology at

http://www.eia.doe.gov/emeu/states/sep_use/notes/use_elec.pdf.

2003 forward: EIA, *Electric Power Monthly*, October 2009, Table 5.1.

Direct Use, Annual

1989–1994: EIA, Form EIA-867, “Annual Nonutility Power Producer Report.”

1995–2007: EIA, *Electric Power Annual 2007*, January 2009, Table 7.2.

2008: Sum of monthly estimates.

Direct Use, Monthly

Annual shares are calculated as annual direct use divided by annual commercial and industrial net generation (on Table 7.1). Then monthly direct use estimates are calculated as the annual share multiplied by the monthly commercial and industrial net generation values. For 2008 and 2009, the 2007 annual share is used.

Discontinued Retail Sales Series Commercial (Old) and Other (Old) 1973–2002: See sources for “Residential” and “Industrial.”