

# 2

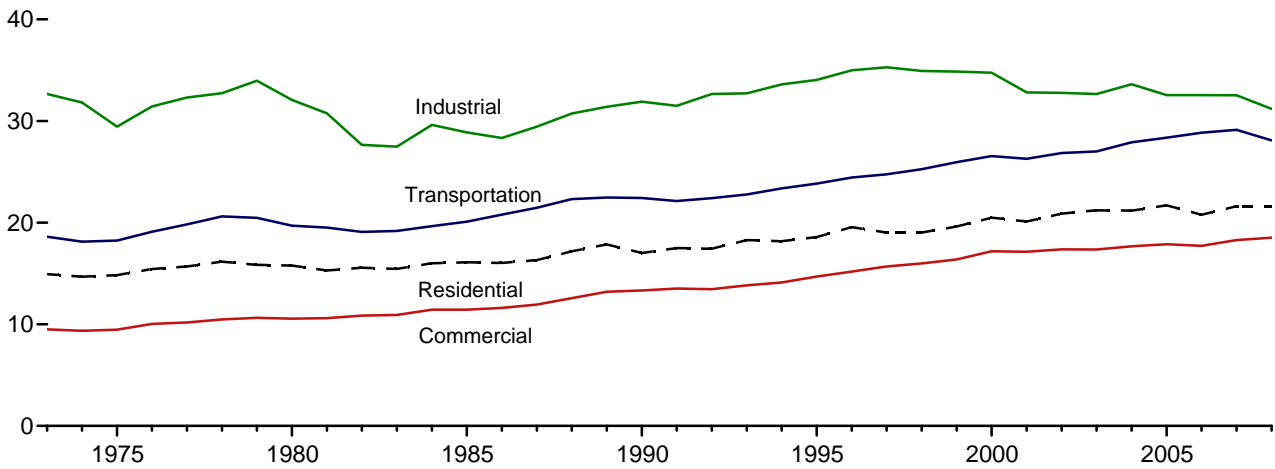
## Energy Consumption by Sector



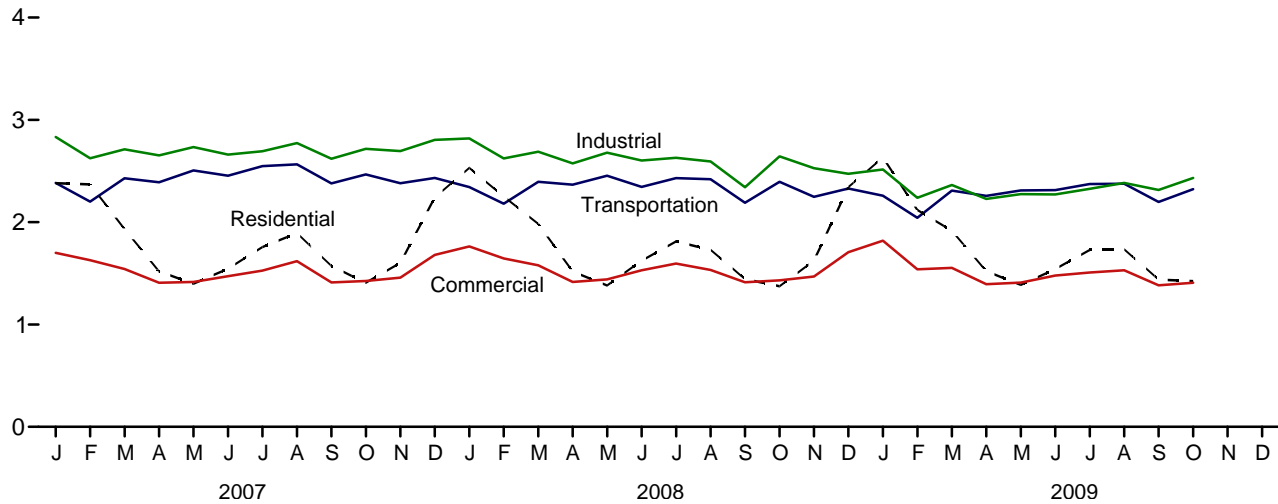
Office buildings, industries, residences, and transport systems, Baltimore, Maryland; east view from the inner harbor.  
Source: U.S. Department of Energy.

**Figure 2.1 Energy Consumption by Sector**  
(Quadrillion Btu)

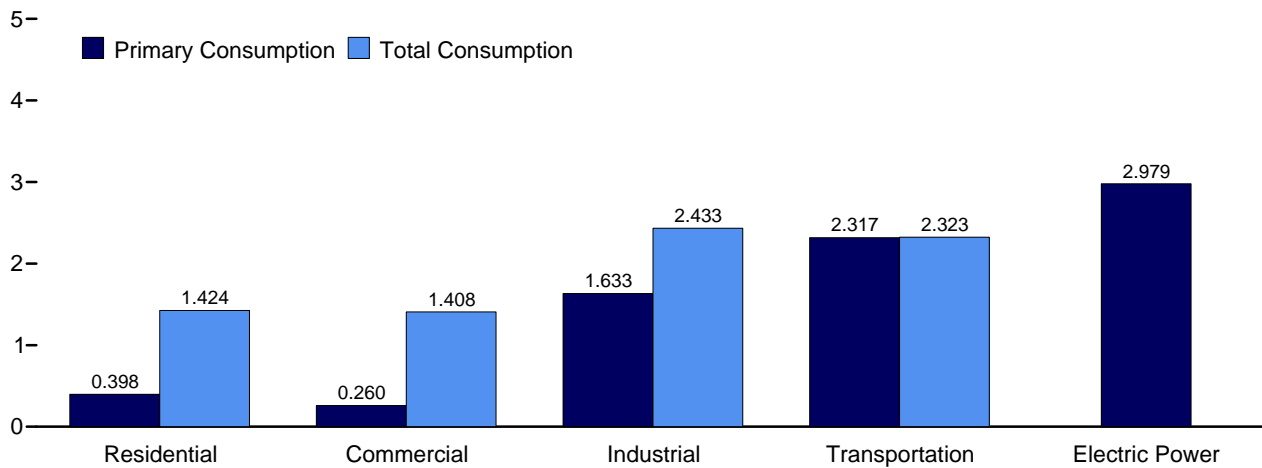
Total Consumption by End-Use Sector, 1973-2008



Total Consumption by End-Use Sector, Monthly



By Sector, October 2009



Web Page: <http://www.eia.doe.gov/emeu/mer/consump.html>.  
Source: Table 2.1.

**Table 2.1 Energy Consumption by Sector**  
(Trillion Btu)

	End-Use Sectors								Electric Power Sector <sup>c,d</sup>	Balancing Item <sup>g</sup>	Total <sup>h</sup>
	Residential		Commercial <sup>a</sup>		Industrial <sup>b</sup>		Transportation				
	Primary <sup>e</sup>	Total <sup>f</sup>	Primary <sup>e</sup>	Total <sup>f</sup>	Primary <sup>e</sup>	Total <sup>f</sup>	Primary <sup>e</sup>	Total <sup>f</sup>	Primary <sup>e</sup>		
<b>1973 Total</b> .....	8,250	14,930	4,381	9,507	24,741	32,653	18,576	18,612	19,753	7	75,708
<b>1975 Total</b> .....	8,006	14,842	4,023	9,466	21,454	29,447	18,209	18,244	20,307	1	71,999
<b>1980 Total</b> .....	7,453	15,787	4,074	10,563	22,610	32,077	19,658	19,696	24,327	-1	78,122
<b>1985 Total</b> .....	7,161	16,088	3,695	11,444	19,468	28,877	20,041	20,087	26,132	-4	76,493
<b>1990 Total</b> .....	6,570	17,015	3,858	13,333	21,208	31,895	22,366	22,420	30,660	-9	84,654
<b>1995 Total</b> .....	6,946	18,578	4,063	14,698	22,748	34,047	23,793	23,849	33,621	3	91,174
<b>1996 Total</b> .....	7,471	19,562	4,235	15,181	23,444	34,989	24,384	24,439	34,638	4	94,176
<b>1997 Total</b> .....	7,040	19,026	4,257	15,694	23,722	35,288	24,697	24,752	35,045	6	94,766
<b>1998 Total</b> .....	6,424	19,021	3,964	15,979	23,211	34,928	25,203	25,258	36,385	-3	95,183
<b>1999 Total</b> .....	6,784	19,621	4,007	16,384	22,991	34,855	25,894	25,951	37,136	6	96,817
<b>2000 Total</b> .....	7,169	20,488	4,227	17,176	22,871	34,758	26,492	26,552	38,214	2	98,975
<b>2001 Total</b> .....	6,879	20,106	4,036	17,141	21,836	32,806	26,216	26,279	37,366	-6	96,326
<b>2002 Total</b> .....	6,938	20,874	4,099	17,367	21,857	32,764	26,788	26,849	38,171	5	97,858
<b>2003 Total</b> .....	7,252	21,208	4,239	17,351	21,576	32,650	26,928	27,002	38,218	-3	98,209
<b>2004 Total</b> .....	7,019	21,178	4,180	17,664	22,455	33,609	27,820	27,899	38,876	(s)	100,351
<b>2005 Total</b> .....	6,921	21,697	4,014	17,875	21,466	32,545	28,280	28,361	39,799	6	100,485
<b>2006 Total</b> .....	6,191	20,770	3,703	17,724	21,632	32,541	28,761	28,841	39,589	(s)	99,875
<b>2007</b> January .....	1,000	2,381	524	1,700	1,924	2,833	2,375	2,383	3,474	(s)	9,297
February .....	1,099	2,370	574	1,628	1,804	2,625	2,193	2,201	3,153	-2	8,821
March .....	804	1,933	446	1,542	1,829	2,711	2,422	2,430	3,116	-4	8,613
April .....	549	1,518	323	1,408	1,759	2,653	2,383	2,390	2,956	-4	7,967
May .....	339	1,399	222	1,416	1,775	2,734	2,498	2,505	3,220	-2	8,052
June .....	262	1,546	189	1,473	1,703	2,661	2,446	2,454	3,533	(s)	8,134
July .....	244	1,757	178	1,526	1,725	2,694	2,541	2,549	3,839	3	8,529
August .....	245	1,893	186	1,618	1,762	2,773	2,558	2,566	4,099	4	8,854
September .....	249	1,572	186	1,411	1,727	2,620	2,372	2,379	3,448	(s)	7,981
October .....	320	1,408	224	1,425	1,784	2,717	2,460	2,466	3,229	-2	8,015
November .....	575	1,602	339	1,459	1,784	2,696	2,373	2,380	3,065	-2	8,135
December .....	941	2,242	506	1,680	1,877	2,805	2,424	2,432	3,409	-1	9,157
<b>Total</b> .....	<b>6,626</b>	<b>21,619</b>	<b>3,896</b>	<b>18,287</b>	<b>21,454</b>	<b>32,523</b>	<b>29,046</b>	<b>29,134</b>	<b>40,542</b>	<b>-10</b>	<b>101,554</b>
<b>2008</b> January .....	1,103	2,531	R 576	R 1,762	R 1,944	R 2,819	R 2,335	R 2,343	3,498	(s)	9,455
February .....	1,025	2,251	R 553	R 1,646	R 1,802	R 2,623	R 2,175	R 2,181	3,147	-2	8,699
March .....	838	1,984	R 459	R 1,578	R 1,817	R 2,689	R 2,388	R 2,395	3,144	-3	8,643
April .....	537	1,518	R 319	R 1,416	R 1,702	R 2,574	R 2,360	R 2,366	2,956	-4	7,871
May .....	362	1,382	R 233	R 1,440	R 1,728	R 2,679	R 2,447	R 2,454	3,184	-3	7,953
June .....	275	1,624	R 189	R 1,529	R 1,657	R 2,602	R 2,337	R 2,344	3,642	1	8,101
July .....	250	1,812	R 181	R 1,595	R 1,693	R 2,630	R 2,424	R 2,431	3,919	2	8,470
August .....	239	1,731	R 177	R 1,534	R 1,674	R 2,594	R 2,413	R 2,420	3,776	1	8,280
September .....	236	1,444	R 178	R 1,414	R 1,486	R 2,342	R 2,184	R 2,191	3,306	(s)	7,390
October .....	352	1,373	R 240	R 1,432	R 1,771	R 2,644	R 2,388	R 2,394	3,093	-4	7,839
November .....	578	1,623	R 338	R 1,469	R 1,680	R 2,528	R 2,241	R 2,248	3,031	-1	7,868
December .....	965	2,343	R 510	R 1,707	R 1,662	R 2,473	R 2,323	R 2,330	3,394	3	8,857
<b>Total</b> .....	<b>6,758</b>	<b>21,616</b>	<b>R 3,952</b>	<b>R 18,522</b>	<b>R 20,619</b>	<b>R 31,199</b>	<b>R 28,015</b>	<b>R 28,098</b>	<b>40,090</b>	<b>-9</b>	<b>99,425</b>
<b>2009</b> January .....	1,157	2,632	R 615	R 1,820	R 1,731	R 2,515	R 2,250	R 2,258	3,471	3	9,228
February .....	936	2,119	R 508	R 1,539	R 1,535	R 2,238	R 2,036	R 2,042	2,923	-1	R 7,937
March .....	781	1,917	R 444	R 1,553	R 1,604	R 2,363	R 2,302	R 2,309	3,011	-2	8,140
April .....	546	1,521	313	1,394	1,473	R 2,228	R 2,251	R 2,257	2,817	1	R 7,401
May .....	336	1,387	R 222	R 1,410	R 1,466	R 2,275	R 2,304	R 2,310	3,054	2	R 7,384
June .....	266	1,541	R 182	R 1,478	R 1,461	R 2,271	R 2,306	R 2,313	3,388	5	7,608
July .....	253	1,729	R 189	R 1,508	R 1,520	R 2,326	R 2,366	R 2,373	3,609	7	R 7,944
August .....	249	1,735	R 186	R 1,531	R 1,536	R 2,384	R 2,369	R 2,376	3,686	6	8,032
September .....	260	1,439	R 192	R 1,383	R 1,528	R 2,315	R 2,192	R 2,198	3,163	2	7,337
October .....	398	1,424	260	1,408	1,633	2,433	2,317	2,323	2,979	-1	7,586
<b>10-Month Total</b> .....	<b>5,181</b>	<b>17,445</b>	<b>3,113</b>	<b>15,024</b>	<b>15,488</b>	<b>23,347</b>	<b>22,693</b>	<b>22,759</b>	<b>32,103</b>	<b>22</b>	<b>78,598</b>
<b>2008 10-Month Total</b> .....	<b>5,216</b>	<b>17,651</b>	<b>3,105</b>	<b>15,346</b>	<b>17,275</b>	<b>26,196</b>	<b>23,452</b>	<b>23,520</b>	<b>33,665</b>	<b>-12</b>	<b>82,701</b>
<b>2007 10-Month Total</b> .....	<b>5,111</b>	<b>17,779</b>	<b>3,051</b>	<b>15,148</b>	<b>17,792</b>	<b>27,021</b>	<b>24,249</b>	<b>24,322</b>	<b>34,067</b>	<b>-7</b>	<b>84,263</b>

<sup>a</sup> Commercial sector, including commercial combined-heat-and-power (CHP) and commercial electricity-only plants.

<sup>b</sup> Industrial sector, including industrial combined-heat-and-power (CHP) and industrial electricity-only plants.

<sup>c</sup> Electricity-only and combined-heat-and-power (CHP) plants within the NAICS 22 category whose primary business is to sell electricity, or electricity and heat, to the public.

<sup>d</sup> Through 1988, data are for electric utilities only. Beginning in 1989, data are for electric utilities and independent power producers.

<sup>e</sup> See "Primary Energy Consumption" in Glossary.

<sup>f</sup> Total energy consumption in the end-use sectors consists of primary energy consumption, electricity retail sales, and electrical system energy losses. See Note 2, "Electrical System Energy Losses," at end of section.

<sup>g</sup> A balancing item. The sum of primary consumption in the five energy-use sectors equals the sum of total consumption in the four end-use sectors. However, total energy consumption does not equal the sum of the sectoral components due to the use of sector-specific conversion factors for coal and natural gas.

<sup>h</sup> Primary energy consumption total. See Table 1.3.

R=Revised. (s)=Less than +0.5 trillion Btu and greater than -0.5 trillion Btu.

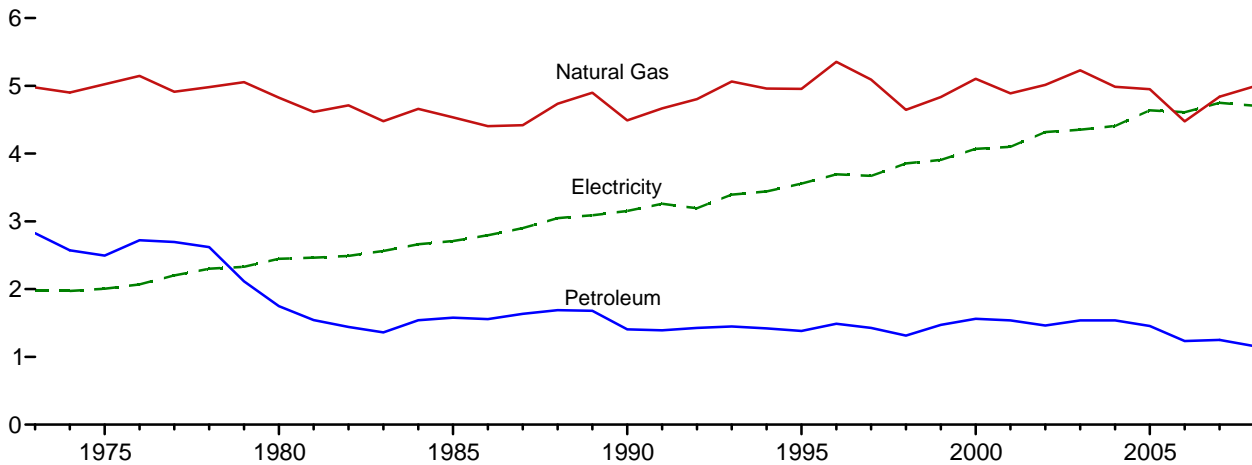
Notes: • See Note, "Classification of Power Plants Into Energy-Use Sectors," at end of Section 7. • See Note 1, "Energy Consumption Data and Surveys," at end of section. • Totals may not equal sum of components due to independent rounding. • Geographic coverage is the 50 States and the District of Columbia.

Web Page: See <http://www.eia.doe.gov/emeu/mer/consump.html> for all available data beginning in 1973.

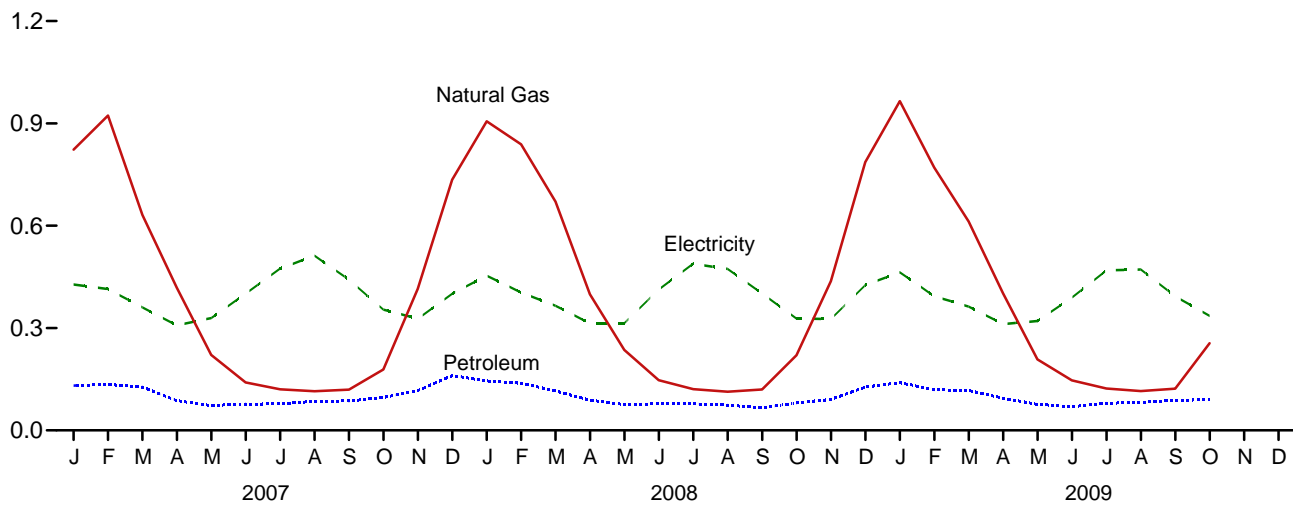
Sources: Tables 1.3 and 2.2-2.6.

**Figure 2.2 Residential Sector Energy Consumption**  
(Quadrillion Btu)

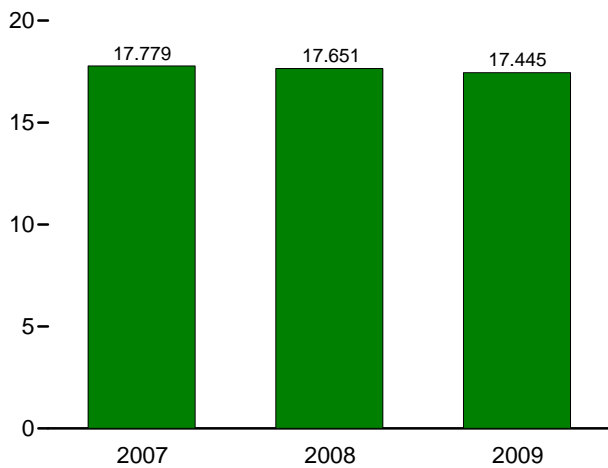
By Major Source, 1973-2008



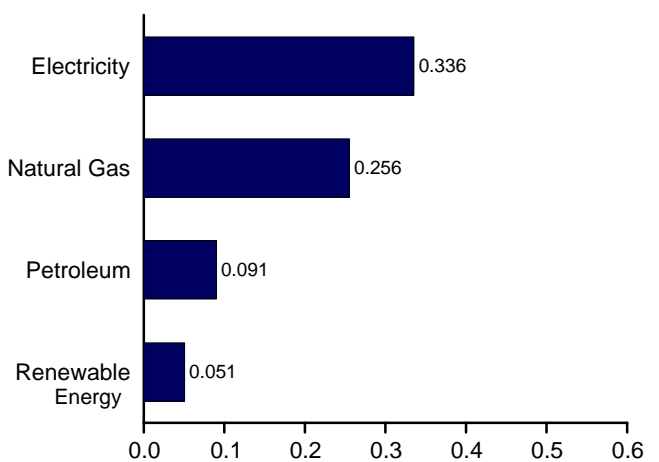
By Major Source, Monthly



Total, January-October



By Major Source, October 2009



Web Page: <http://www.eia.doe.gov/emeu/mer/consump.html>.  
Source: Table 2.2.

**Table 2.2 Residential Sector Energy Consumption**  
(Trillion Btu)

	Primary Consumption <sup>a</sup>									Electricity Retail Sales <sup>d</sup>	Electrical System Energy Losses <sup>e</sup>	Total
	Fossil Fuels				Renewable Energy <sup>b</sup>				Total Primary			
	Coal	Natural Gas <sup>c</sup>	Petro- leum	Total	Geo- thermal	Solar/ PV	Bio- mass	Total				
<b>1973 Total</b> .....	94	4,977	2,825	7,896	NA	NA	354	354	8,250	1,976	4,703	14,930
<b>1975 Total</b> .....	63	5,023	2,495	7,580	NA	NA	425	425	8,006	2,007	4,829	14,842
<b>1980 Total</b> .....	31	4,825	1,748	6,603	NA	NA	850	850	7,453	2,448	5,885	15,787
<b>1985 Total</b> .....	39	4,534	1,578	6,151	NA	NA	1,010	1,010	7,161	2,709	6,219	16,088
<b>1990 Total</b> .....	31	4,491	1,407	5,929	6	56	580	641	6,570	3,153	7,291	17,015
<b>1995 Total</b> .....	17	4,954	1,383	6,355	7	65	520	591	6,946	3,557	8,075	18,578
<b>1996 Total</b> .....	17	5,354	1,488	6,859	7	65	540	612	7,471	3,694	8,397	19,562
<b>1997 Total</b> .....	16	5,093	1,428	6,537	8	65	430	503	7,040	3,671	8,315	19,026
<b>1998 Total</b> .....	12	4,646	1,314	5,971	8	65	380	452	6,424	3,856	8,741	19,021
<b>1999 Total</b> .....	14	4,835	1,473	6,322	9	64	390	462	6,784	3,906	8,931	19,621
<b>2000 Total</b> .....	11	5,105	1,563	6,679	9	61	420	490	7,169	4,069	9,250	20,488
<b>2001 Total</b> .....	12	4,889	1,539	6,440	9	60	370	439	6,879	4,100	9,127	20,106
<b>2002 Total</b> .....	12	5,014	1,463	6,489	10	59	380	449	6,938	4,317	9,619	20,874
<b>2003 Total</b> .....	12	5,230	1,539	6,781	13	58	400	471	7,252	4,353	9,603	21,208
<b>2004 Total</b> .....	11	4,986	1,539	6,537	14	59	410	483	7,019	4,408	9,750	21,178
<b>2005 Total</b> .....	8	4,951	1,455	6,414	16	61	430	507	6,921	4,638	10,139	21,697
<b>2006 Total</b> .....	6	4,476	1,233	5,715	18	67	390	475	6,191	4,611	9,968	20,770
<b>2007</b> January .....	1	823	131	955	2	6	37	45	1,000	427	954	2,381
February .....	1	923	134	1,058	2	6	33	40	1,099	414	857	2,370
March .....	1	632	127	759	2	6	37	45	804	361	769	1,933
April .....	1	418	87	506	2	6	35	43	549	308	661	1,518
May .....	1	221	73	294	2	6	37	45	339	329	731	1,399
June .....	1	141	77	219	2	6	35	43	262	401	884	1,546
July .....	1	121	78	199	2	6	37	45	244	474	1,039	1,757
August .....	1	115	85	200	2	6	37	45	245	512	1,136	1,893
September .....	(s)	119	86	206	2	6	35	43	249	442	881	1,572
October .....	1	178	96	275	2	6	37	45	320	354	735	1,408
November .....	1	415	116	532	2	6	35	43	575	327	700	1,602
December .....	1	735	160	896	2	6	37	45	941	401	900	2,242
<b>Total</b> .....	<b>8</b>	<b>4,840</b>	<b>1,251</b>	<b>6,099</b>	<b>22</b>	<b>75</b>	<b>430</b>	<b>527</b>	<b>6,626</b>	<b>4,750</b>	<b>10,243</b>	<b>21,619</b>
<b>2008</b> January .....	1	906	145	1,052	2	7	42	51	1,103	453	976	2,531
February .....	1	838	138	977	2	7	39	47	1,025	404	822	2,251
March .....	1	671	116	787	2	7	42	51	838	365	781	1,984
April .....	1	399	88	488	2	7	40	49	537	314	667	1,518
May .....	1	236	76	312	2	7	42	51	362	314	705	1,382
June .....	1	147	78	226	2	7	40	49	275	413	936	1,624
July .....	1	121	78	199	2	7	42	51	250	489	1,073	1,812
August .....	1	113	74	188	2	7	42	51	239	473	1,019	1,731
September .....	(s)	120	66	187	2	7	40	49	236	401	807	1,444
October .....	1	220	81	302	2	7	42	51	352	328	693	1,373
November .....	1	438	91	529	2	7	40	49	578	326	719	1,623
December .....	1	787	127	914	2	7	42	51	965	426	952	2,343
<b>Total</b> .....	<b>7</b>	<b>4,994</b>	<b>1,158</b>	<b>6,159</b>	<b>26</b>	<b>83</b>	<b>490</b>	<b>599</b>	<b>6,758</b>	<b>4,706</b>	<b>10,152</b>	<b>21,616</b>
<b>2009</b> January .....	1	965	140	1,106	2	7	42	51	1,157	463	1,012	2,632
February .....	1	770	119	890	2	6	38	46	936	393	789	2,119
March .....	1	612	117	730	2	7	42	51	781	363	773	1,917
April .....	(s)	402	94	496	2	7	40	49	546	312	664	1,521
May .....	(s)	208	76	285	2	7	42	51	336	321	731	1,387
June .....	(s)	147	69	217	2	7	40	49	266	389	886	1,541
July .....	(s)	123	79	203	2	7	42	51	253	469	1,007	1,729
August .....	(s)	115	82	198	2	7	42	51	249	472	1,015	1,735
September .....	(s)	122	88	211	2	7	40	49	260	393	786	1,439
October .....	1	256	91	347	2	7	42	51	398	336	691	1,424
<b>10-Month Total</b> ...	<b>6</b>	<b>3,720</b>	<b>956</b>	<b>4,682</b>	<b>22</b>	<b>69</b>	<b>408</b>	<b>499</b>	<b>5,181</b>	<b>3,911</b>	<b>8,354</b>	<b>17,445</b>
<b>2008 10-Month Total</b> ...	<b>6</b>	<b>3,771</b>	<b>940</b>	<b>4,717</b>	<b>22</b>	<b>69</b>	<b>408</b>	<b>499</b>	<b>5,216</b>	<b>3,954</b>	<b>8,480</b>	<b>17,651</b>
<b>2007 10-Month Total</b> ...	<b>6</b>	<b>3,691</b>	<b>974</b>	<b>4,672</b>	<b>18</b>	<b>62</b>	<b>358</b>	<b>439</b>	<b>5,111</b>	<b>4,023</b>	<b>8,645</b>	<b>17,779</b>

<sup>a</sup> See "Primary Energy Consumption" in Glossary.

<sup>b</sup> Data are estimates. See Table 10.2a for notes on series components.

<sup>c</sup> Natural gas only; excludes the estimated portion of supplemental gaseous fuels. See Note 3, "Supplemental Gaseous Fuels," at end of Section 4.

<sup>d</sup> Electricity retail sales to ultimate customers reported by electric utilities and, beginning in 1996, other energy service providers.

<sup>e</sup> Total losses are calculated as the primary energy consumed by the electric power sector minus the energy content of electricity retail sales. Total losses are allocated to the end-use sectors in proportion to each sector's share of total

electricity retail sales. See Note 2, "Electrical System Energy Losses," at end of section.

NA=Not available. (s)=Less than 0.5 trillion Btu.

Notes: • See Note 1, "Energy Consumption Data and Surveys," at end of section. • Totals may not equal sum of components due to independent rounding.

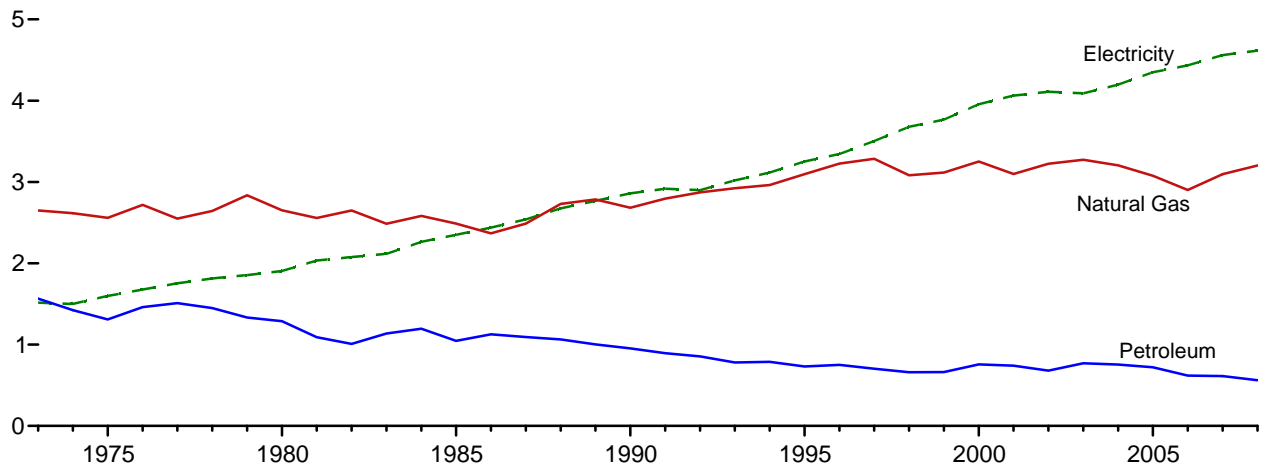
• Geographic coverage is the 50 States and the District of Columbia.

Web Page: See <http://www.eia.doe.gov/emeu/mer/consump.html> for all available data beginning in 1973.

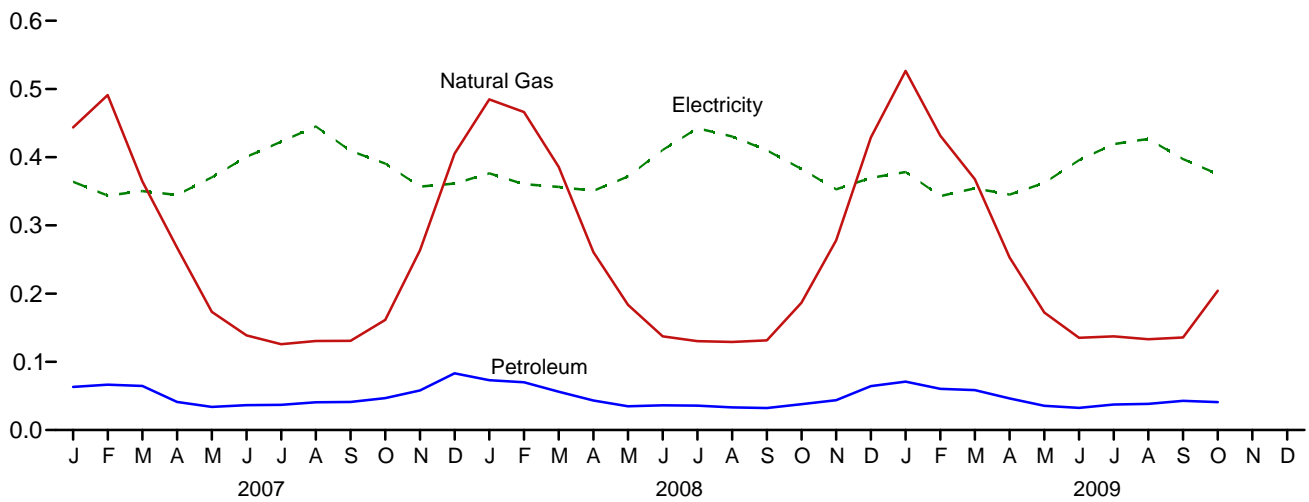
Sources: Tables 2.6, 3.8a, 4.3, 6.2, 7.6, 10.2a, A4, A5, and A6.

**Figure 2.3 Commercial Sector Energy Consumption**  
(Quadrillion Btu)

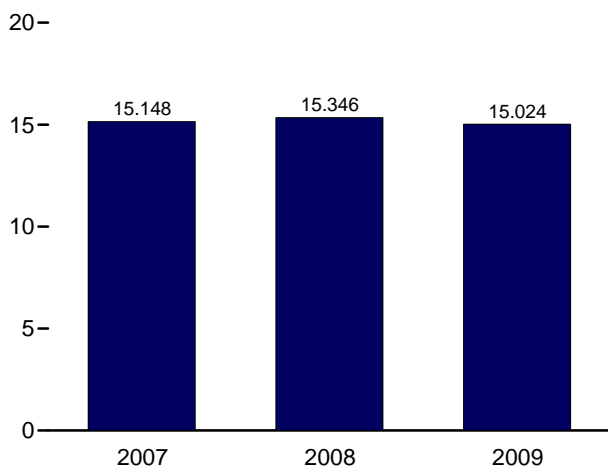
By Major Source, 1973-2008



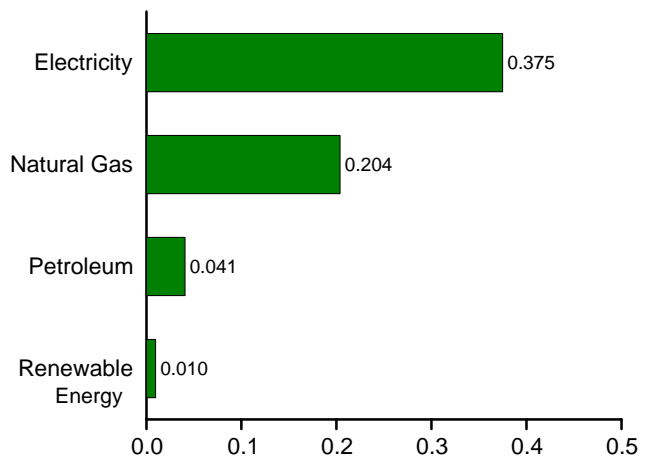
By Major Source, Monthly



Total, January-October



By Major Source, October 2009



Web Page: <http://www.eia.doe.gov/emeu/mer/consump.html>.  
Source: Table 2.3.

**Table 2.3 Commercial Sector Energy Consumption**  
(Trillion Btu)

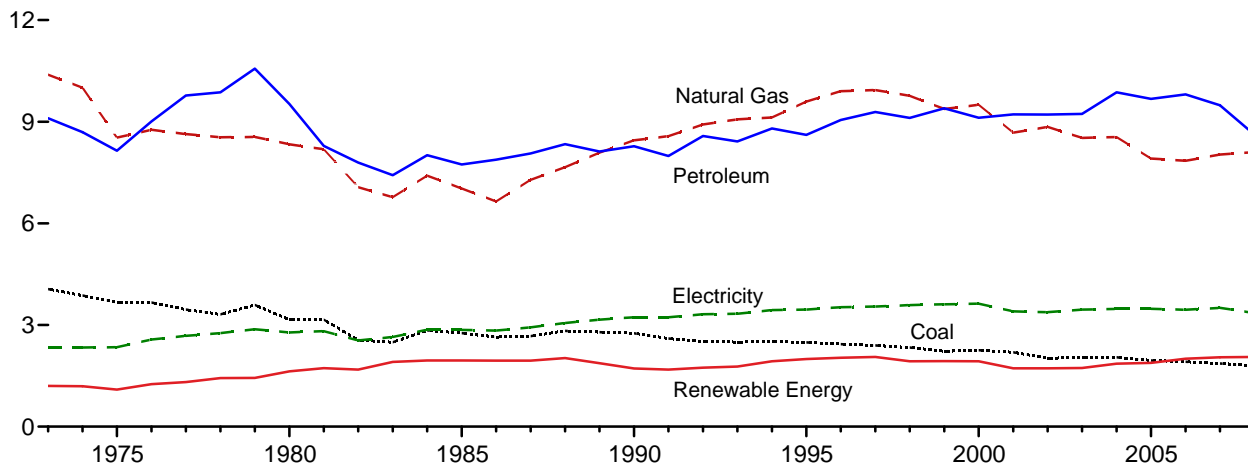
	Primary Consumption <sup>a</sup>								Total Primary	Electricity Retail Sales <sup>f</sup>	Electrical System Energy Losses <sup>g</sup>	Total
	Fossil Fuels				Renewable Energy <sup>b</sup>							
	Coal	Natural Gas <sup>c</sup>	Petro-leum <sup>d</sup>	Total	Hydro-electric Power <sup>e</sup>	Geo-thermal	Bio-mass	Total				
<b>1973 Total</b> .....	160	2,649	1,565	4,374	NA	NA	7	7	4,381	1,517	3,609	9,507
<b>1975 Total</b> .....	147	2,558	1,310	4,015	NA	NA	8	8	4,023	1,598	3,845	9,466
<b>1980 Total</b> .....	115	2,651	1,287	4,053	NA	NA	21	21	4,074	1,906	4,582	10,563
<b>1985 Total</b> .....	137	2,488	1,045	3,670	NA	NA	24	24	3,695	2,351	5,398	11,444
<b>1990 Total</b> .....	124	2,682	953	3,760	1	3	94	98	3,858	2,860	6,615	13,333
<b>1995 Total</b> .....	117	3,096	732	3,945	1	5	113	118	4,063	3,252	7,382	14,698
<b>1996 Total</b> .....	122	3,226	751	4,099	1	5	129	135	4,235	3,344	7,603	15,181
<b>1997 Total</b> .....	129	3,285	704	4,118	1	6	131	138	4,257	3,503	7,935	15,694
<b>1998 Total</b> .....	93	3,083	661	3,837	1	7	118	127	3,964	3,678	8,338	15,979
<b>1999 Total</b> .....	103	3,115	661	3,879	1	7	121	129	4,007	3,766	8,610	16,384
<b>2000 Total</b> .....	92	3,252	756	4,099	1	8	119	128	4,227	3,956	8,993	17,176
<b>2001 Total</b> .....	97	3,097	741	3,935	1	8	92	101	4,036	4,062	9,043	17,141
<b>2002 Total</b> .....	90	3,225	681	3,995	(s)	9	95	104	4,099	4,110	9,158	17,367
<b>2003 Total</b> .....	82	3,274	770	4,126	1	11	101	113	4,239	4,090	9,023	17,351
<b>2004 Total</b> .....	103	3,204	755	4,062	1	12	105	118	4,180	4,198	9,286	17,664
<b>2005 Total</b> .....	97	3,076	721	3,894	1	14	105	119	4,014	4,351	9,511	17,875
<b>2006 Total</b> .....	65	2,902	620	3,586	1	14	102	117	3,703	4,435	9,586	17,724
<b>2007 January</b> .....	7	444	63	514	(s)	1	9	10	524	364	812	1,700
February .....	7	491	67	565	(s)	1	8	9	574	344	711	1,628
March .....	7	364	65	436	(s)	1	9	10	446	350	746	1,542
April .....	5	267	41	313	(s)	1	8	10	323	345	740	1,408
May .....	5	173	34	212	(s)	1	9	10	222	370	824	1,416
June .....	5	139	37	180	(s)	1	8	10	189	400	883	1,473
July .....	5	126	37	168	(s)	1	9	10	178	423	926	1,526
August .....	5	131	41	176	(s)	1	9	10	186	445	987	1,618
September .....	4	131	41	176	(s)	1	8	10	186	409	816	1,411
October .....	6	162	47	214	(s)	1	9	10	224	391	810	1,425
November .....	7	264	58	329	(s)	1	9	10	339	357	763	1,459
December .....	8	405	83	496	(s)	1	9	10	506	361	812	1,680
<b>Total</b> .....	<b>70</b>	<b>3,095</b>	<b>613</b>	<b>3,778</b>	<b>1</b>	<b>14</b>	<b>102</b>	<b>118</b>	<b>3,896</b>	<b>4,560</b>	<b>9,832</b>	<b>18,287</b>
<b>2008 January</b> .....	7	485	R 73	R 565	(s)	1	9	R 10	R 576	376	810	R 1,762
February .....	7	466	R 70	R 543	(s)	1	9	10	R 553	360	732	R 1,646
March .....	7	386	R 56	R 449	(s)	1	9	10	R 459	356	763	R 1,578
April .....	5	261	R 43	R 309	(s)	1	9	10	R 319	351	746	R 1,416
May .....	5	184	R 35	R 223	(s)	1	9	10	R 233	372	835	R 1,440
June .....	5	137	R 36	R 179	(s)	1	9	10	R 189	411	930	R 1,529
July .....	5	130	R 36	R 171	(s)	1	9	10	R 181	442	972	R 1,595
August .....	5	129	R 33	R 167	(s)	1	9	10	R 177	430	926	R 1,534
September .....	4	131	R 32	R 168	(s)	1	9	10	R 178	410	826	R 1,414
October .....	5	187	R 38	R 230	(s)	1	R 8	10	R 240	383	810	R 1,432
November .....	6	278	R 44	R 328	(s)	1	9	10	R 338	353	778	R 1,469
December .....	7	429	R 64	R 500	(s)	1	9	10	R 510	370	827	R 1,707
<b>Total</b> .....	<b>67</b>	<b>3,202</b>	<b>R 561</b>	<b>R 3,830</b>	<b>1</b>	<b>15</b>	<b>R 106</b>	<b>R 122</b>	<b>R 3,952</b>	<b>4,615</b>	<b>9,955</b>	<b>R 18,522</b>
<b>2009 January</b> .....	8	526	R 71	R 605	(s)	1	9	11	R 615	378	826	R 1,820
February .....	7	R 431	R 60	R 499	(s)	1	8	R 9	R 508	343	688	R 1,539
March .....	6	368	R 58	R 433	(s)	1	10	12	R 444	354	755	R 1,553
April .....	4	R 253	R 46	303	(s)	1	9	10	313	345	736	1,394
May .....	4	R 172	R 36	R 212	(s)	1	9	10	R 222	362	825	R 1,410
June .....	4	135	R 33	R 172	(s)	1	9	10	R 182	396	901	R 1,478
July .....	4	R 137	R 37	R 179	(s)	1	9	10	R 189	419	900	R 1,508
August .....	4	133	R 38	R 176	(s)	1	9	10	R 186	427	918	R 1,531
September .....	4	136	R 43	R 182	(s)	1	9	10	R 192	397	794	R 1,383
October .....	6	204	41	251	(s)	1	9	10	260	375	772	1,408
<b>10-Month Total</b> ...	<b>51</b>	<b>2,496</b>	<b>464</b>	<b>3,011</b>	<b>1</b>	<b>12</b>	<b>89</b>	<b>102</b>	<b>3,113</b>	<b>3,797</b>	<b>8,115</b>	<b>15,024</b>
<b>2008 10-Month Total</b> ...	<b>55</b>	<b>2,496</b>	<b>453</b>	<b>3,004</b>	<b>1</b>	<b>12</b>	<b>88</b>	<b>101</b>	<b>3,105</b>	<b>3,892</b>	<b>8,350</b>	<b>15,346</b>
<b>2007 10-Month Total</b> ...	<b>55</b>	<b>2,427</b>	<b>472</b>	<b>2,954</b>	<b>1</b>	<b>12</b>	<b>85</b>	<b>98</b>	<b>3,051</b>	<b>3,841</b>	<b>8,255</b>	<b>15,148</b>

<sup>a</sup> See "Primary Energy Consumption" in Glossary.  
<sup>b</sup> Most data are estimates. See Table 10.2a for notes on series components and estimation.  
<sup>c</sup> Natural gas only; excludes the estimated portion of supplemental gaseous fuels. See Note 3, "Supplemental Gaseous Fuels," at end of Section 4.  
<sup>d</sup> Does not include the fuel ethanol portion of motor gasoline—fuel ethanol is included in "Biomass."  
<sup>e</sup> Conventional hydroelectric power.  
<sup>f</sup> Electricity retail sales to ultimate customers reported by electric utilities and, beginning in 1996, other energy service providers.  
<sup>g</sup> Total losses are calculated as the primary energy consumed by the electric power sector minus the energy content of electricity retail sales. Total losses are allocated to the end-use sectors in proportion to each sector's share of total

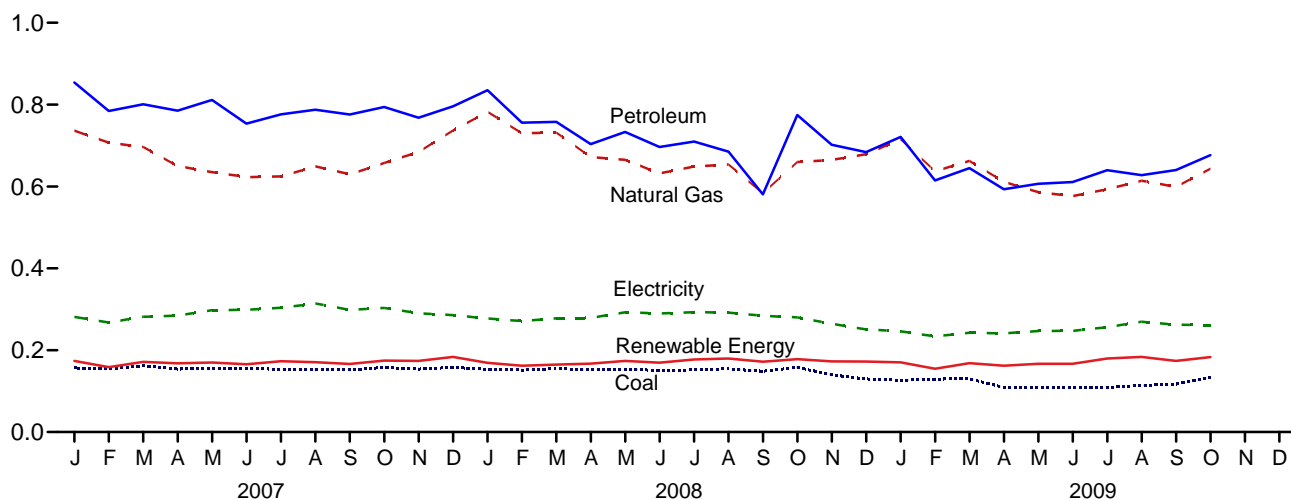
electricity retail sales. See Note 2, "Electrical System Energy Losses," at end of section.  
R=Revised. NA=Not available. (s)=Less than 0.5 trillion Btu and greater than -0.5 trillion Btu.  
Notes: • The commercial sector includes commercial combined-heat-and-power (CHP) and commercial electricity-only plants. See Note, "Classification of Power Plants Into Energy-Use Sectors," at end of Section 7. • See Note 1, "Energy Consumption Data and Surveys," at end of section. • Totals may not equal sum of components due to independent rounding. • Geographic coverage is the 50 States and the District of Columbia.  
Web Page: See <http://www.eia.doe.gov/emeu/mer/consump.html> for all available data beginning in 1973.  
Sources: Tables 2.6, 3.8a, 4.3, 6.2, 7.6, 10.2a, A4, A5, and A6.

**Figure 2.4 Industrial Sector Energy Consumption**  
(Quadrillion Btu)

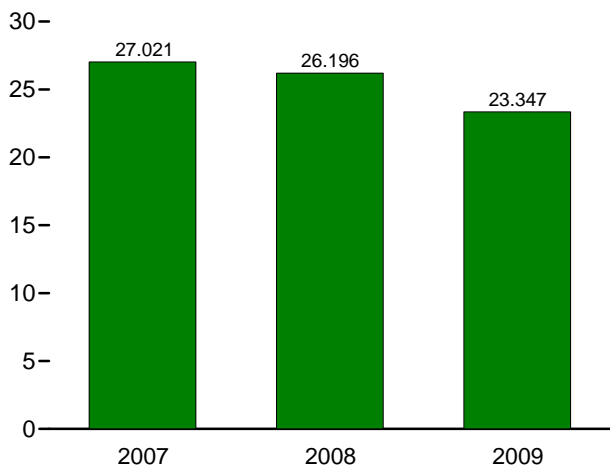
By Major Source, 1973-2008



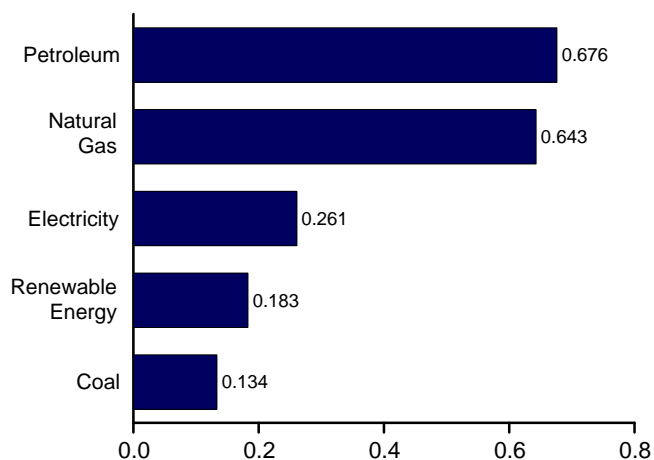
By Major Source, Monthly



Total, January-October



By Major Source, October 2009



Web Page: <http://www.eia.doe.gov/emeu/mer/consump.html>.  
Source: Table 2.4.

**Table 2.4 Industrial Sector Energy Consumption**  
(Trillion Btu)

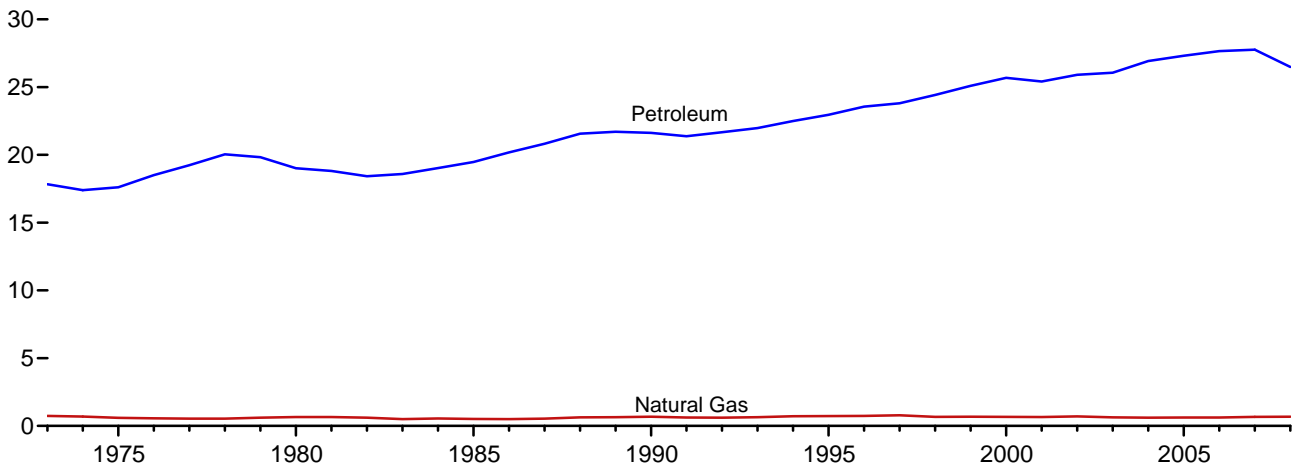
	Primary Consumption <sup>a</sup>									Electricity Retail Sales <sup>g</sup>	Electrical System Energy Losses <sup>h</sup>	Total <sup>e</sup>
	Fossil Fuels				Renewable Energy <sup>b</sup>				Total Primary			
	Coal	Natural Gas <sup>c</sup>	Petro-leum <sup>d</sup>	Total <sup>e</sup>	Hydro-electric Power <sup>f</sup>	Geo-thermal	Bio-mass	Total				
<b>1973 Total</b> .....	4,057	10,388	9,104	23,541	35	NA	1,165	1,200	24,741	2,341	5,571	32,653
<b>1975 Total</b> .....	3,667	8,532	8,146	20,359	32	NA	1,063	1,096	21,454	2,346	5,647	29,447
<b>1980 Total</b> .....	3,155	8,333	9,525	20,977	33	NA	1,600	1,633	22,610	2,781	6,686	32,077
<b>1985 Total</b> .....	2,760	7,032	7,738	17,516	33	NA	1,919	1,952	19,468	2,855	6,554	28,877
<b>1990 Total</b> .....	2,756	8,451	8,278	19,490	31	2	1,685	1,718	21,208	3,226	7,461	31,895
<b>1995 Total</b> .....	2,488	9,592	8,613	20,754	55	3	1,936	1,994	22,748	3,455	7,844	34,047
<b>1996 Total</b> .....	2,434	9,901	9,052	21,410	61	3	1,970	2,034	23,444	3,527	8,018	34,989
<b>1997 Total</b> .....	2,395	9,933	9,289	21,663	58	3	1,998	2,059	23,722	3,542	8,024	35,288
<b>1998 Total</b> .....	2,335	9,763	9,114	21,280	55	3	1,873	1,931	23,211	3,587	8,131	34,928
<b>1999 Total</b> .....	2,227	9,375	9,395	21,054	49	4	1,883	1,936	22,991	3,611	8,254	34,855
<b>2000 Total</b> .....	2,256	9,500	9,119	20,941	42	4	1,884	1,930	22,871	3,631	8,256	34,758
<b>2001 Total</b> .....	2,192	8,676	9,217	20,115	33	5	1,684	1,721	21,836	3,400	7,570	32,806
<b>2002 Total</b> .....	2,019	8,845	9,209	20,135	39	5	1,679	1,722	21,857	3,379	7,528	32,764
<b>2003 Total</b> .....	2,041	8,521	9,232	19,845	43	3	1,684	1,730	21,576	3,454	7,620	32,650
<b>2004 Total</b> .....	2,047	8,544	9,865	20,594	33	4	1,824	1,860	22,455	3,473	7,682	33,609
<b>2005 Total</b> .....	1,954	7,911	9,673	19,583	32	4	1,847	1,883	21,466	3,477	7,602	32,545
<b>2006 Total</b> .....	1,914	7,846	9,806	19,627	29	4	1,972	2,005	21,632	3,451	7,459	32,541
<b>2007</b> January .....	157	736	854	1,751	2	(s)	172	174	1,924	281	627	2,833
February .....	154	707	784	1,646	1	(s)	157	158	1,804	267	553	2,625
March .....	162	696	801	1,658	2	(s)	169	171	1,829	282	600	2,711
April .....	154	650	785	1,591	2	(s)	166	168	1,759	284	611	2,653
May .....	156	635	811	1,605	2	(s)	168	170	1,775	298	662	2,734
June .....	156	623	753	1,538	1	(s)	164	165	1,703	299	659	2,661
July .....	153	625	776	1,552	1	(s)	172	173	1,725	304	665	2,694
August .....	152	649	787	1,591	1	(s)	170	171	1,762	314	697	2,773
September .....	152	629	776	1,560	1	(s)	165	166	1,727	298	595	2,620
October .....	158	657	794	1,609	1	(s)	173	175	1,784	303	629	2,717
November .....	154	684	768	1,611	1	(s)	172	174	1,784	290	621	2,696
December .....	158	737	796	1,694	2	(s)	182	183	1,877	286	642	2,805
<b>Total</b> .....	<b>1,865</b>	<b>8,030</b>	<b>9,486</b>	<b>19,406</b>	<b>16</b>	<b>5</b>	<b>2,028</b>	<b>2,048</b>	<b>21,454</b>	<b>3,507</b>	<b>7,562</b>	<b>32,523</b>
<b>2008</b> January .....	154	782	R 835	R 1,775	2	(s)	167	169	R 1,944	278	597	R 2,819
February .....	152	730	R 756	R 1,640	2	(s)	159	162	R 1,802	271	551	R 2,623
March .....	155	732	R 758	R 1,652	2	(s)	162	165	R 1,817	278	594	R 2,689
April .....	152	672	R 704	R 1,535	2	(s)	165	167	R 1,702	279	593	R 2,574
May .....	153	665	R 733	R 1,555	2	(s)	172	174	R 1,728	293	658	R 2,679
June .....	151	632	R 696	R 1,488	1	(s)	168	R 169	R 1,657	290	656	R 2,602
July .....	152	649	R 710	R 1,516	1	(s)	176	R 177	R 1,693	293	643	R 2,630
August .....	155	654	R 685	R 1,494	1	(s)	178	R 179	R 1,674	292	628	R 2,594
September .....	148	583	R 581	R 1,314	1	(s)	171	172	R 1,486	284	571	R 2,342
October .....	158	660	R 774	R 1,593	1	(s)	177	178	R 1,771	280	593	R 2,644
November .....	140	665	R 702	R 1,508	1	(s)	171	173	R 1,680	264	583	R 2,528
December .....	130	679	R 684	R 1,490	2	(s)	R 170	R 172	R 1,662	251	561	R 2,473
<b>Total</b> .....	<b>1,799</b>	<b>8,103</b>	<b>R 8,618</b>	<b>R 18,561</b>	<b>19</b>	<b>5</b>	<b>R 2,034</b>	<b>R 2,058</b>	<b>R 20,619</b>	<b>3,351</b>	<b>7,229</b>	<b>R 31,199</b>
<b>2009</b> January .....	127	715	R 721	R 1,561	2	(s)	168	170	R 1,731	246	537	R 2,515
February .....	129	637	R 615	R 1,380	1	(s)	153	155	R 1,535	234	469	R 2,238
March .....	130	663	R 645	R 1,436	2	(s)	166	168	R 1,604	242	516	R 2,363
April .....	109	611	R 593	R 1,311	2	(s)	160	162	R 1,473	241	514	R 2,228
May .....	108	586	R 607	R 1,299	2	(s)	R 164	167	R 1,466	247	562	R 2,275
June .....	108	576	R 611	R 1,294	2	(s)	165	167	R 1,461	247	563	R 2,271
July .....	109	593	R 640	R 1,340	1	(s)	178	180	R 1,520	256	550	R 2,326
August .....	114	614	R 627	R 1,352	1	(s)	182	184	R 1,536	269	579	R 2,384
September .....	117	599	R 640	R 1,354	1	(s)	172	174	R 1,528	262	524	R 2,315
October .....	134	643	676	1,450	1	(s)	181	183	1,633	261	538	2,433
<b>10-Month Total</b> ...	<b>1,186</b>	<b>6,239</b>	<b>6,374</b>	<b>13,779</b>	<b>16</b>	<b>4</b>	<b>1,689</b>	<b>1,709</b>	<b>15,488</b>	<b>2,506</b>	<b>5,353</b>	<b>23,347</b>
<b>2008 10-Month Total</b> ...	<b>1,529</b>	<b>6,759</b>	<b>7,232</b>	<b>15,562</b>	<b>16</b>	<b>4</b>	<b>1,693</b>	<b>1,713</b>	<b>17,275</b>	<b>2,836</b>	<b>6,085</b>	<b>26,196</b>
<b>2007 10-Month Total</b> ...	<b>1,553</b>	<b>6,609</b>	<b>7,922</b>	<b>16,101</b>	<b>13</b>	<b>4</b>	<b>1,674</b>	<b>1,691</b>	<b>17,792</b>	<b>2,931</b>	<b>6,298</b>	<b>27,021</b>

<sup>a</sup> See "Primary Energy Consumption" in Glossary.  
<sup>b</sup> Most data are estimates. See Table 10.2b for notes on series components and estimation.  
<sup>c</sup> Natural gas only; excludes the estimated portion of supplemental gaseous fuels. See Note 3, "Supplemental Gaseous Fuels," at end of Section 4.  
<sup>d</sup> Does not include the fuel ethanol portion of motor gasoline—fuel ethanol is included in "Biomass."  
<sup>e</sup> Includes coal coke net imports, which are not separately displayed. See Tables 1.4a and 1.4b.  
<sup>f</sup> Conventional hydroelectric power.  
<sup>g</sup> Electricity retail sales to ultimate customers reported by electric utilities and, beginning in 1996, other energy service providers.  
<sup>h</sup> Total losses are calculated as the primary energy consumed by the electric power sector minus the energy content of electricity retail sales. Total losses are

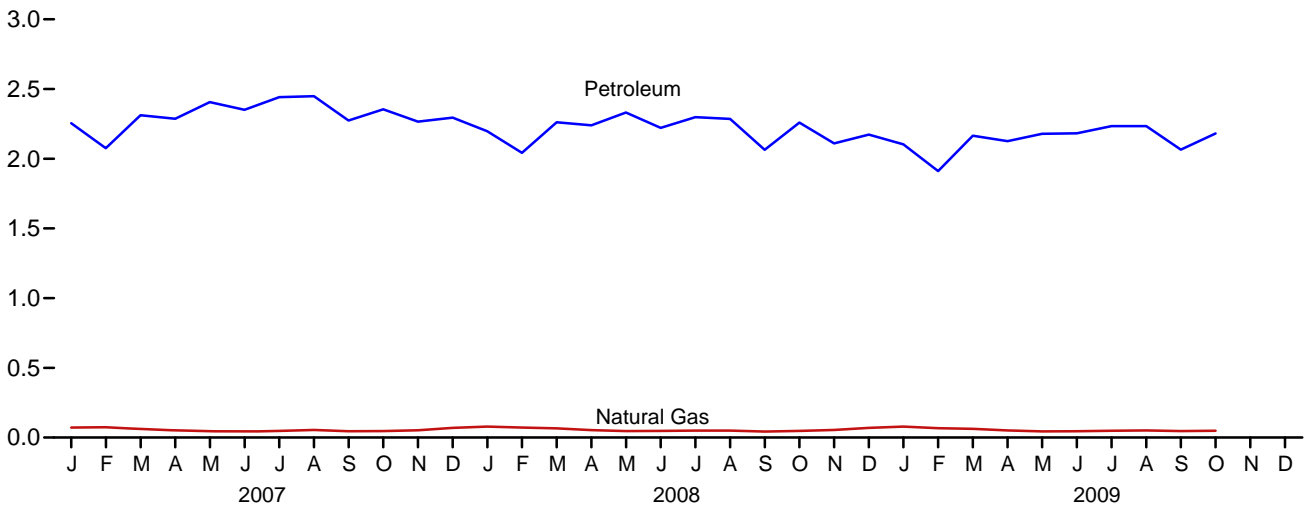
allocated to the end-use sectors in proportion to each sector's share of total electricity retail sales. See Note 2, "Electrical System Energy Losses," at end of section.  
R=Revised. NA=Not available. (s)=Less than 0.5 trillion Btu.  
Notes: • The industrial sector includes industrial combined-heat-and-power (CHP) and industrial electricity-only plants. See Note, "Classification of Power Plants Into Energy-Use Sectors," at end of Section 7. • See Note 1, "Energy Consumption Data and Surveys," at end of section. • Totals may not equal sum of components due to independent rounding. • Geographic coverage is the 50 States and the District of Columbia.  
Web Page: See <http://www.eia.doe.gov/emeu/mer/consump.html> for all available data beginning in 1973.  
Sources: Tables 1.4a, 1.4b, 2.6, 3.8b, 4.3, 6.2, 7.6, 10.2b, A4, A5, and A6.

**Figure 2.5 Transportation Sector Energy Consumption**  
(Quadrillion Btu)

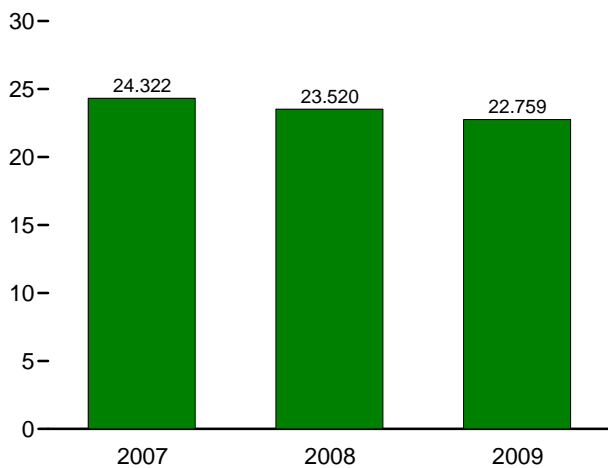
By Major Source, 1973-2008



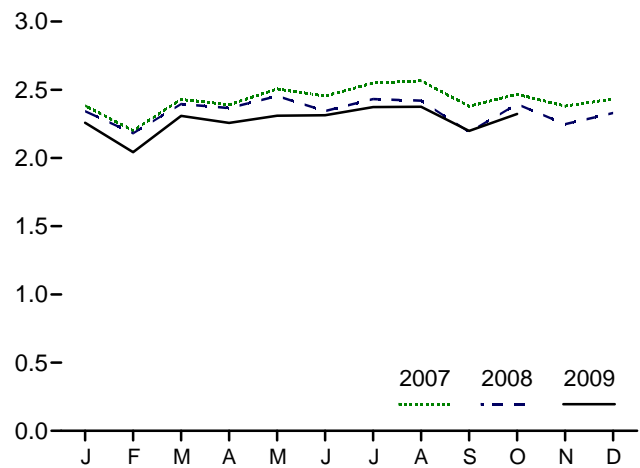
By Major Source, Monthly



Total, January-October



Total, Monthly



Web Page: <http://www.eia.doe.gov/emeu/mer/consump.html>.  
Source: Table 2.5.

**Table 2.5 Transportation Sector Energy Consumption**  
(Trillion Btu)

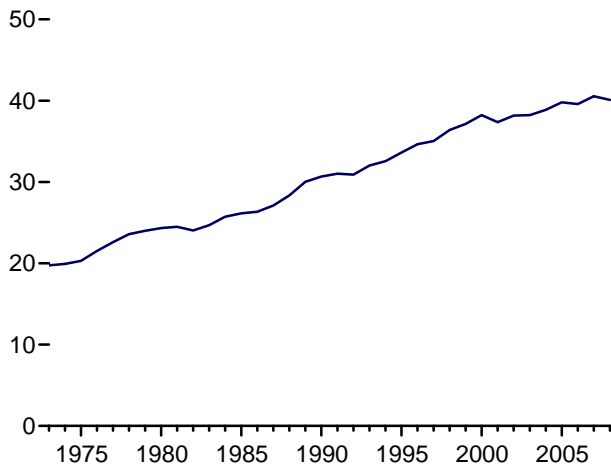
	Primary Consumption <sup>a</sup>					Electricity Retail Sales <sup>e</sup>	Electrical System Energy Losses <sup>f</sup>	Total	
	Fossil Fuels			Renewable Energy <sup>b</sup>	Total Primary				
	Coal	Natural Gas <sup>c</sup>	Petroleum <sup>d</sup>	Biomass					
<b>1973 Total</b> .....	<b>3</b>	<b>743</b>	<b>17,831</b>	<b>18,576</b>	<b>NA</b>	<b>18,576</b>	<b>11</b>	<b>25</b>	<b>18,612</b>
<b>1975 Total</b> .....	<b>1</b>	<b>595</b>	<b>17,614</b>	<b>18,209</b>	<b>NA</b>	<b>18,209</b>	<b>10</b>	<b>24</b>	<b>18,244</b>
<b>1980 Total</b> .....	(g)	<b>650</b>	<b>19,009</b>	<b>19,658</b>	<b>NA</b>	<b>19,658</b>	<b>11</b>	<b>27</b>	<b>19,696</b>
<b>1985 Total</b> .....	(g)	<b>519</b>	<b>19,471</b>	<b>19,990</b>	<b>51</b>	<b>20,041</b>	<b>14</b>	<b>32</b>	<b>20,087</b>
<b>1990 Total</b> .....	(g)	<b>680</b>	<b>21,625</b>	<b>22,305</b>	<b>62</b>	<b>22,366</b>	<b>16</b>	<b>37</b>	<b>22,420</b>
<b>1995 Total</b> .....	(g)	<b>724</b>	<b>22,954</b>	<b>23,678</b>	<b>115</b>	<b>23,793</b>	<b>17</b>	<b>39</b>	<b>23,849</b>
<b>1996 Total</b> .....	(g)	<b>737</b>	<b>23,565</b>	<b>24,302</b>	<b>82</b>	<b>24,384</b>	<b>17</b>	<b>38</b>	<b>24,439</b>
<b>1997 Total</b> .....	(g)	<b>780</b>	<b>23,813</b>	<b>24,593</b>	<b>104</b>	<b>24,697</b>	<b>17</b>	<b>38</b>	<b>24,752</b>
<b>1998 Total</b> .....	(g)	<b>666</b>	<b>24,422</b>	<b>25,088</b>	<b>115</b>	<b>25,203</b>	<b>17</b>	<b>38</b>	<b>25,258</b>
<b>1999 Total</b> .....	(g)	<b>675</b>	<b>25,098</b>	<b>25,774</b>	<b>120</b>	<b>25,894</b>	<b>17</b>	<b>40</b>	<b>25,951</b>
<b>2000 Total</b> .....	(g)	<b>672</b>	<b>25,682</b>	<b>26,354</b>	<b>138</b>	<b>26,492</b>	<b>18</b>	<b>42</b>	<b>26,552</b>
<b>2001 Total</b> .....	(g)	<b>658</b>	<b>25,413</b>	<b>26,071</b>	<b>145</b>	<b>26,216</b>	<b>20</b>	<b>43</b>	<b>26,279</b>
<b>2002 Total</b> .....	(g)	<b>702</b>	<b>25,913</b>	<b>26,615</b>	<b>173</b>	<b>26,788</b>	<b>19</b>	<b>42</b>	<b>26,849</b>
<b>2003 Total</b> .....	(g)	<b>630</b>	<b>26,063</b>	<b>26,693</b>	<b>234</b>	<b>26,928</b>	<b>23</b>	<b>51</b>	<b>27,002</b>
<b>2004 Total</b> .....	(g)	<b>603</b>	<b>26,922</b>	<b>27,525</b>	<b>295</b>	<b>27,820</b>	<b>25</b>	<b>55</b>	<b>27,899</b>
<b>2005 Total</b> .....	(g)	<b>625</b>	<b>27,309</b>	<b>27,934</b>	<b>346</b>	<b>28,280</b>	<b>26</b>	<b>56</b>	<b>28,361</b>
<b>2006 Total</b> .....	(g)	<b>625</b>	<b>27,652</b>	<b>28,277</b>	<b>484</b>	<b>28,761</b>	<b>25</b>	<b>54</b>	<b>28,841</b>
<b>2007 January</b> .....	(g)	72	2,254	2,326	49	2,375	3	6	2,383
February .....	(g)	75	2,075	2,150	43	2,193	2	5	2,201
March .....	(g)	62	2,312	2,374	48	2,422	3	5	2,430
April .....	(g)	52	2,287	2,339	44	2,383	2	5	2,390
May .....	(g)	45	2,406	2,450	48	2,498	2	5	2,505
June .....	(g)	45	2,351	2,396	51	2,446	2	5	2,454
July .....	(g)	48	2,442	2,490	52	2,541	2	5	2,549
August .....	(g)	55	2,449	2,504	54	2,558	2	5	2,566
September .....	(g)	46	2,274	2,319	52	2,372	2	5	2,379
October .....	(g)	47	2,354	2,401	59	2,460	2	5	2,466
November .....	(g)	53	2,266	2,319	54	2,373	2	5	2,380
December .....	(g)	69	2,295	2,364	60	2,424	2	5	2,432
<b>Total</b> .....	(g)	<b>667</b>	<b>27,766</b>	<b>28,432</b>	<b>614</b>	<b>29,046</b>	<b>28</b>	<b>60</b>	<b>29,134</b>
<b>2008 January</b> .....	(g)	78	R 2,197	R 2,276	59	R 2,335	2	5	R 2,343
February .....	(g)	72	R 2,043	R 2,114	60	R 2,175	2	5	R 2,181
March .....	(g)	66	R 2,262	R 2,328	61	R 2,388	2	5	R 2,395
April .....	(g)	53	R 2,240	R 2,293	67	R 2,360	2	4	R 2,366
May .....	(g)	46	R 2,332	R 2,378	69	R 2,447	2	5	R 2,454
June .....	(g)	47	R 2,221	R 2,268	69	R 2,337	2	5	R 2,344
July .....	(g)	50	R 2,298	R 2,348	76	R 2,424	2	5	R 2,431
August .....	(g)	49	R 2,285	R 2,335	78	R 2,413	2	5	R 2,420
September .....	(g)	43	R 2,064	R 2,107	77	R 2,184	2	4	R 2,191
October .....	(g)	48	R 2,259	R 2,307	R 81	R 2,388	2	5	R 2,394
November .....	(g)	54	R 2,111	R 2,165	R 77	R 2,241	2	5	R 2,248
December .....	(g)	69	R 2,173	R 2,242	R 81	R 2,323	2	5	R 2,330
<b>Total</b> .....	(g)	<b>676</b>	<b>R 26,485</b>	<b>R 27,161</b>	<b>R 855</b>	<b>R 28,015</b>	<b>26</b>	<b>56</b>	<b>R 28,098</b>
<b>2009 January</b> .....	(g)	78	R 2,103	R 2,181	R 70	R 2,250	3	5	R 2,258
February .....	(g)	67	R 1,911	R 1,978	58	R 2,036	2	4	R 2,042
March .....	(g)	63	R 2,166	R 2,228	73	R 2,302	2	5	R 2,309
April .....	(g)	51	R 2,126	R 2,177	74	R 2,251	2	4	R 2,257
May .....	(g)	R 45	R 2,179	R 2,223	80	R 2,304	2	4	R 2,310
June .....	(g)	45	R 2,182	R 2,227	79	R 2,306	2	5	R 2,313
July .....	(g)	49	R 2,233	R 2,282	84	R 2,366	2	5	R 2,373
August .....	(g)	51	R 2,234	R 2,285	84	R 2,369	2	5	R 2,376
September .....	(g)	46	R 2,065	R 2,112	80	R 2,192	2	4	R 2,198
October .....	(g)	49	2,181	2,230	87	2,317	2	4	2,323
<b>10-Month Total</b> ...	(g)	<b>543</b>	<b>21,379</b>	<b>21,923</b>	<b>770</b>	<b>22,693</b>	<b>21</b>	<b>46</b>	<b>22,759</b>
<b>2008 10-Month Total</b> ...	(g)	<b>553</b>	<b>22,201</b>	<b>22,754</b>	<b>698</b>	<b>23,452</b>	<b>22</b>	<b>47</b>	<b>23,520</b>
<b>2007 10-Month Total</b> ...	(g)	<b>545</b>	<b>23,205</b>	<b>23,749</b>	<b>499</b>	<b>24,249</b>	<b>23</b>	<b>50</b>	<b>24,322</b>

<sup>a</sup> See "Primary Energy Consumption" in Glossary.  
<sup>b</sup> Data are estimates. See Table 10.2b for notes on series components.  
<sup>c</sup> Natural gas only; does not include supplemental gaseous fuels. See Note 3, "Supplemental Gaseous Fuels," at end of Section 4.  
<sup>d</sup> Does not include fuel ethanol and biodiesel that have been blended with petroleum—biofuels are included in "Biomass."  
<sup>e</sup> Electricity retail sales to ultimate customers reported by electric utilities and, beginning in 1996, other energy service providers.  
<sup>f</sup> Total losses are calculated as the primary energy consumed by the electric power sector minus the energy content of electricity retail sales. Total losses are allocated to the end-use sectors in proportion to each sector's share of total

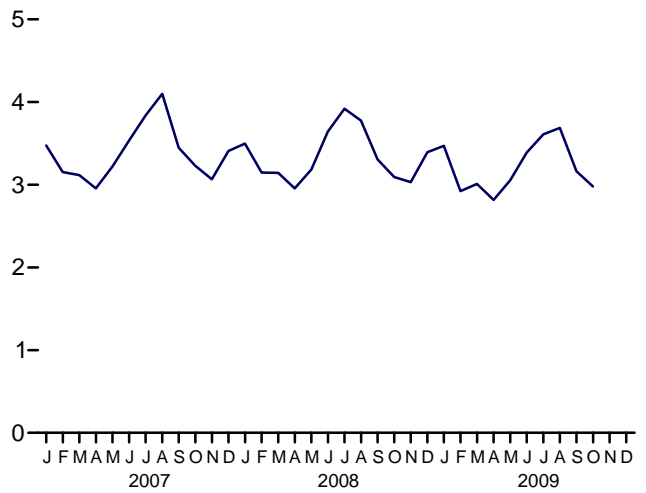
electricity retail sales. See Note 2, "Electrical System Energy Losses," at end of section.  
<sup>g</sup> Beginning in 1978, the small amounts of coal consumed for transportation are reported as industrial sector consumption.  
R=Revised. NA=Not available.  
Notes: • See Note 1, "Energy Consumption Data and Surveys," at end of section. • Totals may not equal sum of components due to independent rounding.  
• Geographic coverage is the 50 States and the District of Columbia.  
Web Page: See <http://www.eia.doe.gov/emeu/mer/consump.html> for all available data beginning in 1973.  
Sources: Tables 2.6, 3.8c, 4.3, 6.2, 7.6, 10.2b, A4, A5, and A6.

**Figure 2.6 Electric Power Sector Energy Consumption**  
(Quadrillion Btu)

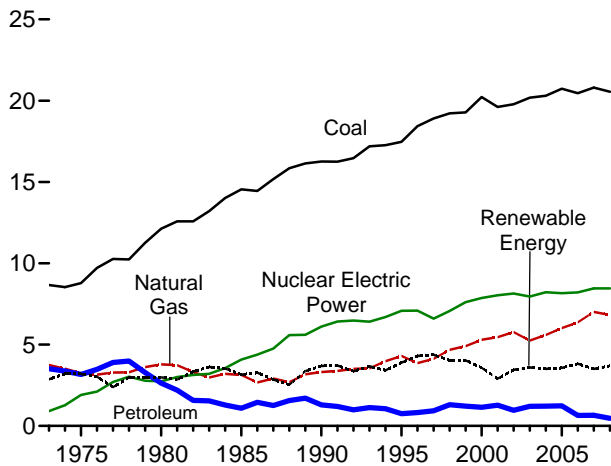
Total, 1973-2008



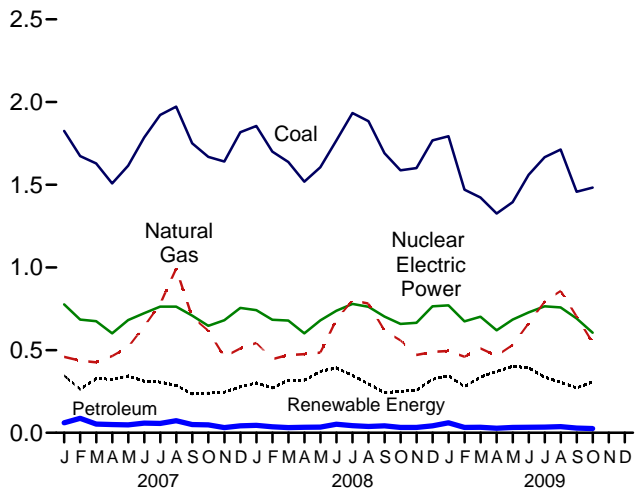
Total, Monthly



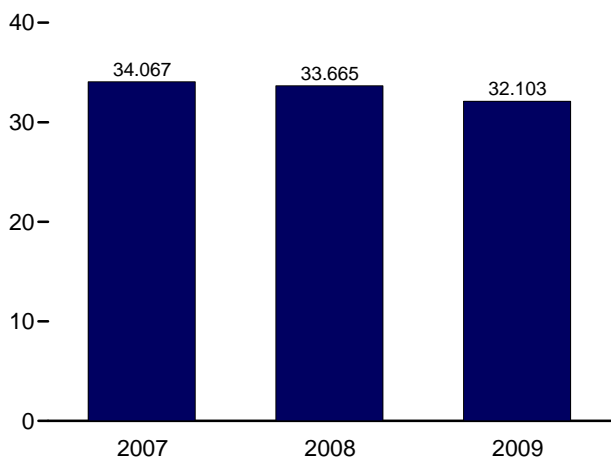
By Major Source, 1973-2008



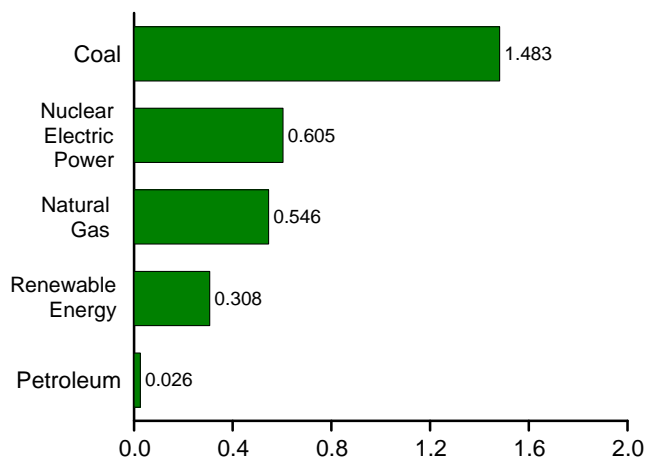
By Major Source, Monthly



Total, January-October



By Major Source, October 2009



Web Page: <http://www.eia.doe.gov/emeu/mer/consump.html>  
Source: Table 2.6.

**Table 2.6 Electric Power Sector Energy Consumption**  
(Trillion Btu)

	Primary Consumption <sup>a</sup>												Elec- tricity Net Imports	Total Primary
	Fossil Fuels				Nuclear Electric Power	Renewable Energy <sup>b</sup>								
	Coal	Natural Gas <sup>c</sup>	Petro- leum	Total		Hydro- electric Power <sup>d</sup>	Geo- thermal	Solar/ PV	Wind	Bio- mass	Total			
<b>1973 Total</b> .....	8,658	3,748	3,515	15,921	910	2,827	43	NA	NA	3	2,873	49	19,753	
<b>1975 Total</b> .....	8,786	3,240	3,166	15,191	1,900	3,122	70	NA	NA	2	3,194	21	20,307	
<b>1980 Total</b> .....	12,123	3,778	2,634	18,534	2,739	2,867	110	NA	NA	4	2,982	71	24,327	
<b>1985 Total</b> .....	14,542	3,135	1,090	18,767	4,076	2,937	198	(s)	(s)	14	3,150	140	26,132	
<b>1990 Total<sup>e</sup></b> .....	16,261	3,309	1,289	20,859	6,104	3,014	326	4	29	317	3,689	8	30,660	
<b>1995 Total</b> .....	17,466	4,302	755	22,523	7,075	3,149	280	5	33	422	3,889	134	33,621	
<b>1996 Total</b> .....	18,429	3,862	817	23,109	7,087	3,528	300	5	33	438	4,305	137	34,638	
<b>1997 Total</b> .....	18,905	4,126	927	23,957	6,597	3,581	309	5	34	446	4,375	116	35,045	
<b>1998 Total</b> .....	19,216	4,675	1,306	25,197	7,068	3,241	311	5	31	444	4,032	88	36,385	
<b>1999 Total</b> .....	19,279	4,902	1,211	25,393	7,610	3,218	312	5	46	453	4,034	99	37,136	
<b>2000 Total</b> .....	20,220	5,293	1,144	26,658	7,862	2,768	296	5	57	453	3,579	115	38,214	
<b>2001 Total</b> .....	19,614	5,458	1,277	26,348	8,033	2,209	289	6	70	337	2,910	75	37,366	
<b>2002 Total</b> .....	19,783	5,767	961	26,511	8,143	2,650	305	6	105	380	3,445	72	38,171	
<b>2003 Total</b> .....	20,185	5,246	1,205	26,636	7,959	2,781	303	5	115	397	3,601	22	38,218	
<b>2004 Total</b> .....	20,305	5,595	1,212	27,112	8,222	2,656	311	6	142	388	3,503	39	38,876	
<b>2005 Total</b> .....	20,737	6,015	1,235	27,986	8,160	2,670	309	6	178	406	3,568	84	39,799	
<b>2006 Total</b> .....	20,462	6,375	648	27,485	8,214	2,839	306	5	264	412	3,827	63	39,589	
<b>2007</b> January .....	1,825	459	60	2,345	776	256	27	(s)	24	39	346	6	3,474	
February .....	1,673	436	88	2,196	684	182	24	(s)	25	32	263	10	3,153	
March .....	1,629	426	53	2,108	674	237	25	(s)	30	35	328	6	3,116	
April .....	1,508	464	50	2,022	601	234	24	1	31	33	324	10	2,956	
May .....	1,615	519	48	2,183	682	256	24	1	29	34	344	12	3,220	
June .....	1,786	643	58	2,487	723	224	26	1	26	35	312	11	3,533	
July .....	1,922	778	56	2,757	763	221	26	1	21	36	306	13	3,839	
August .....	1,973	993	73	3,038	763	196	26	1	27	36	286	12	4,099	
September .....	1,750	699	50	2,500	709	145	26	1	28	35	235	5	3,448	
October .....	1,669	618	48	2,335	647	145	27	(s)	33	35	241	7	3,229	
November .....	1,640	459	31	2,130	681	154	25	(s)	31	36	246	9	3,065	
December .....	1,817	510	42	2,369	755	180	27	(s)	34	37	278	7	3,409	
<b>Total</b> .....	<b>20,808</b>	<b>7,005</b>	<b>657</b>	<b>28,470</b>	<b>8,458</b>	<b>2,430</b>	<b>308</b>	<b>6</b>	<b>341</b>	<b>423</b>	<b>3,508</b>	<b>107</b>	<b>40,542</b>	
<b>2008</b> January .....	1,855	543	45	2,443	742	199	25	(s)	41	37	302	11	3,498	
February .....	1,700	445	37	2,182	683	179	23	(s)	37	33	272	10	3,147	
March .....	1,638	470	31	2,139	679	207	26	1	46	39	318	7	3,144	
April .....	1,518	476	33	2,027	601	209	26	1	50	34	319	9	2,956	
May .....	1,605	486	34	2,125	680	260	27	1	51	33	371	8	3,184	
June .....	1,767	683	52	2,502	738	280	27	1	49	35	393	9	3,642	
July .....	1,933	802	43	2,778	779	244	27	1	38	37	347	15	3,919	
August .....	1,884	781	39	2,704	762	200	27	1	31	37	296	15	3,776	
September .....	1,690	617	42	2,350	703	154	26	1	27	34	242	10	3,306	
October .....	1,587	559	32	2,178	659	148	27	1	43	33	251	6	3,093	
November .....	1,600	471	33	2,104	665	152	26	(s)	45	35	258	4	3,031	
December .....	1,768	489	42	2,299	765	202	26	(s)	58	37	322	7	3,394	
<b>Total</b> .....	<b>20,547</b>	<b>6,823</b>	<b>463</b>	<b>27,833</b>	<b>8,455</b>	<b>2,432</b>	<b>312</b>	<b>8</b>	<b>514</b>	<b>423</b>	<b>3,690</b>	<b>112</b>	<b>40,090</b>	
<b>2009</b> January .....	1,793	495	60	2,348	771	230	26	(s)	54	35	346	7	3,471	
February .....	1,470	460	32	1,962	674	174	24	(s)	49	32	280	8	2,923	
March .....	1,423	511	34	1,968	702	210	26	1	64	36	337	4	3,011	
April .....	1,326	466	27	1,820	620	247	25	1	67	32	371	6	2,817	
May .....	1,395	531	32	1,958	684	286	25	1	57	33	402	9	3,054	
June .....	1,560	663	33	2,256	728	283	25	1	49	36	394	11	3,388	
July .....	1,667	793	34	2,494	765	228	26	1	45	36	336	14	3,609	
August .....	1,713	858	37	2,608	758	192	26	1	49	37	305	15	3,686	
September .....	1,457	704	29	2,190	692	172	25	1	40	33	271	11	3,163	
October .....	1,483	546	26	2,055	605	193	25	1	57	32	308	12	2,979	
<b>10-Month Total</b> .....	<b>15,287</b>	<b>6,026</b>	<b>345</b>	<b>21,658</b>	<b>6,998</b>	<b>2,215</b>	<b>253</b>	<b>7</b>	<b>531</b>	<b>343</b>	<b>3,349</b>	<b>97</b>	<b>32,103</b>	
<b>2008 10-Month Total</b> .....	<b>17,178</b>	<b>5,862</b>	<b>388</b>	<b>23,428</b>	<b>7,025</b>	<b>2,079</b>	<b>260</b>	<b>8</b>	<b>412</b>	<b>351</b>	<b>3,110</b>	<b>101</b>	<b>33,665</b>	
<b>2007 10-Month Total</b> .....	<b>17,350</b>	<b>6,036</b>	<b>584</b>	<b>23,970</b>	<b>7,022</b>	<b>2,096</b>	<b>256</b>	<b>6</b>	<b>275</b>	<b>351</b>	<b>2,984</b>	<b>91</b>	<b>34,067</b>	

<sup>a</sup> See "Primary Energy Consumption" in Glossary.

<sup>b</sup> See Table 10.2c for notes on series components.

<sup>c</sup> Natural gas only; excludes the estimated portion of supplemental gaseous fuels. See Note 3, "Supplemental Gaseous Fuels," at end of Section 4.

<sup>d</sup> Conventional hydroelectric power.

<sup>e</sup> Through 1988, data are for electric utilities only. Beginning in 1989, data are for electric utilities and independent power producers.

NA=Not available. (s)=Less than 0.5 trillion Btu.

Notes: • Data are for fuels consumed to produce electricity and useful thermal

output. • The electric power sector comprises electricity-only and combined-heat-and-power (CHP) plants within the NAICS 22 category whose primary business is to sell electricity, or electricity and heat, to the public. • See Note 1, "Energy Consumption Data and Surveys," at end of section. • Totals may not equal sum of components due to independent rounding. • Geographic coverage is the 50 States and the District of Columbia.

Web Page: See <http://www.eia.doe.gov/emeu/mer/consump.html> for all available data beginning in 1973.

Sources: Tables 3.8c, 4.3, 6.2, 7.1, 7.2b, 10.2c, A4, A5, and A6.

## Energy Consumption by Sector

**Note 1. Energy Consumption Data and Surveys.** Most of the data in this section of the *Monthly Energy Review (MER)* are developed from a group of energy-related surveys, typically called "supply surveys," conducted by the U.S. Energy Information Administration (EIA). Supply surveys are directed to suppliers and marketers of specific energy sources. They measure the quantities of specific energy sources produced, or the quantities supplied to the market, or both. The data obtained from EIA's supply surveys are integrated to yield the summary consumption statistics published in this section (and in Section 1) of the *MER*.

Users of EIA's energy consumption statistics should be aware of a second group of energy-related surveys, typically called "consumption surveys." Consumption surveys gather information on the types of energy consumed by end users of energy, along with the characteristics of those end users that can be associated with energy use. For example, the Manufacturing Energy Consumption Survey belongs to the consumption survey group because it collects information directly from end users (the manufacturing establishments). There are important differences between the supply and consumption surveys that need to be taken into account in any analysis that uses both data sources. For information on

those differences, see *Energy Consumption by End-Use Sector, A Comparison of Measures by Consumption and Supply Surveys*, DOE/EIA-0533, U.S. Energy Information Administration, Washington, DC, April 6, 1990.

**Note 2. Electrical System Energy Losses.** Electrical system energy losses are calculated as the difference between total primary consumption by the electric power sector (see Table 2.6) and the total energy content of electricity retail sales (see Tables 7.6 and A6). Most of these losses occur at steam-electric power plants (conventional and nuclear) in the conversion of heat energy into mechanical energy to turn electric generators. The loss is a thermodynamically necessary feature of the steam-electric cycle. Part of the energy input-to-output losses is a result of imputing fossil energy equivalent inputs for hydroelectric and other energy sources, since there is no generally accepted practice for measuring those thermal conversion rates. In addition to conversion losses, other losses include power plant use of electricity, transmission and distribution of electricity from power plants to end-use consumers (also called "line losses"), and unaccounted for electricity. Total losses are allocated to the end-use sectors in proportion to each sector's share of total electricity sales. Overall, about two thirds of total energy input is lost in conversion. Currently, of electricity generated, approximately 5 percent is lost in plant use and 7 percent is lost in transmission and distribution.