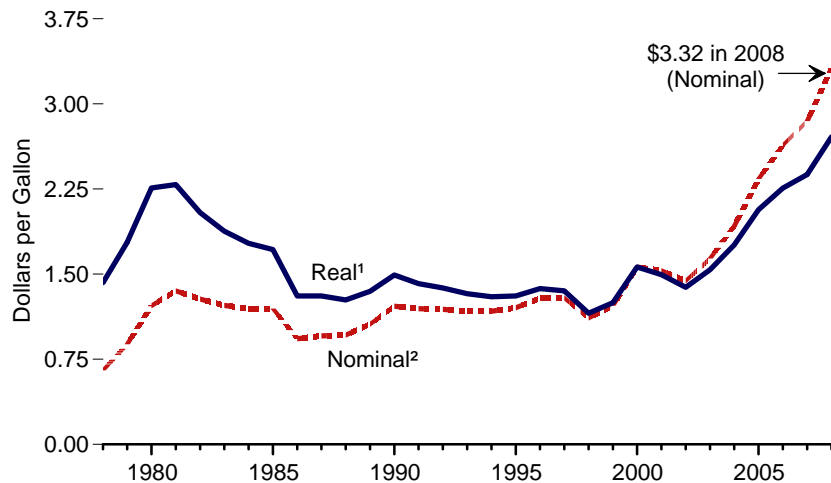
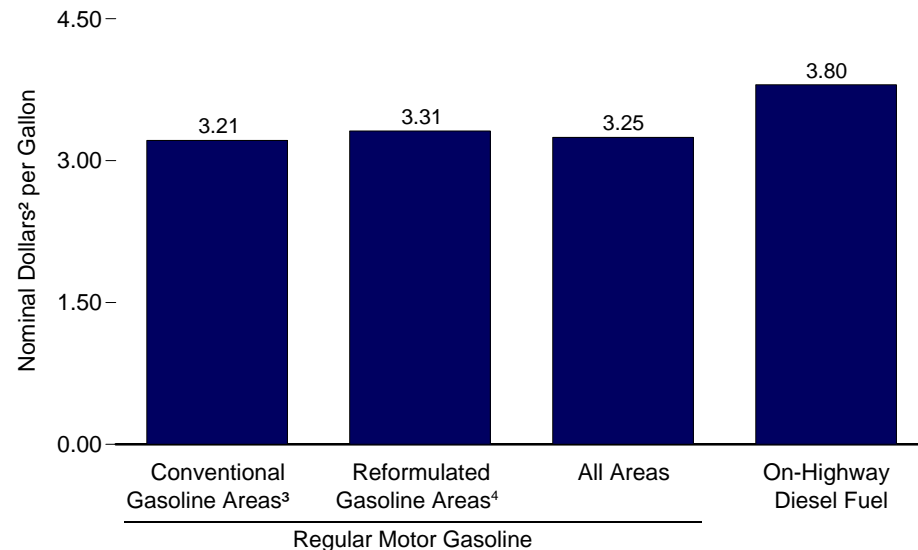


Figure 5.24 Retail Motor Gasoline and On-Highway Diesel Fuel Prices

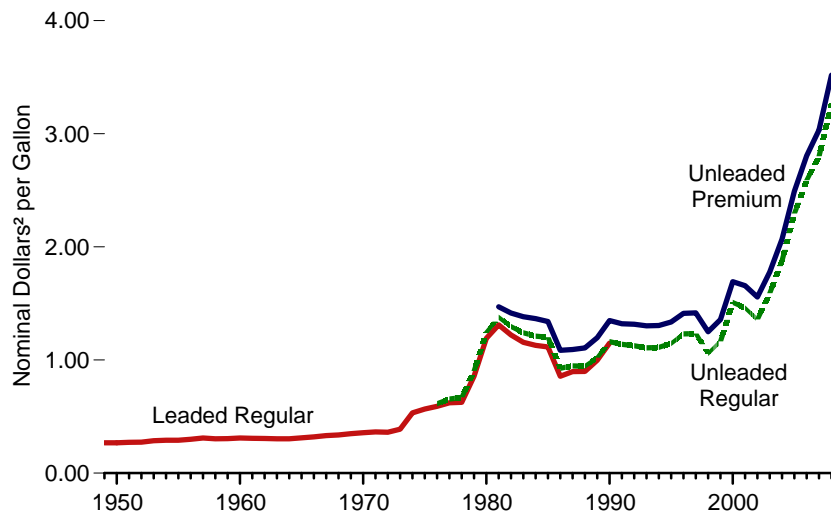
Motor Gasoline, All Grades, 1978-2008



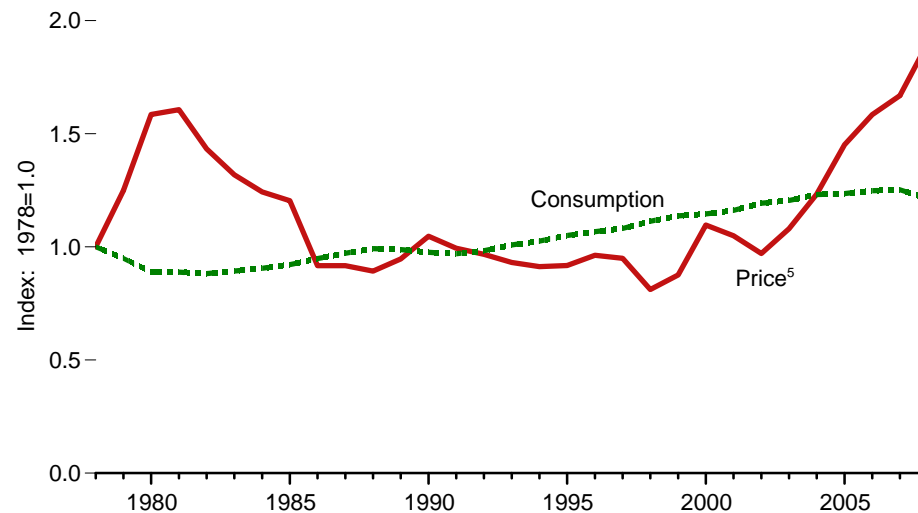
Regular Motor Gasoline by Area Type and On-Highway Diesel Fuel, 2008



Motor Gasoline by Grade, 1949-2008



Motor Gasoline Price and Consumption, 1978-2008, Indexed to 1978



¹ In chained (2000) dollars, calculated by using gross domestic product implicit price deflators in Table D1. See "Chained Dollars" in Glossary.

² See "Nominal Dollars" in Glossary.

³ Any area that does not require the sale of reformulated gasoline.

⁴ "Reformulated Gasoline Areas" are ozone nonattainment areas designated by the Environmental Protection Agency that require the use of reformulated gasoline.

⁵ All grades, in chained (2000) dollars.

Sources: Tables 5.11 and 5.24.