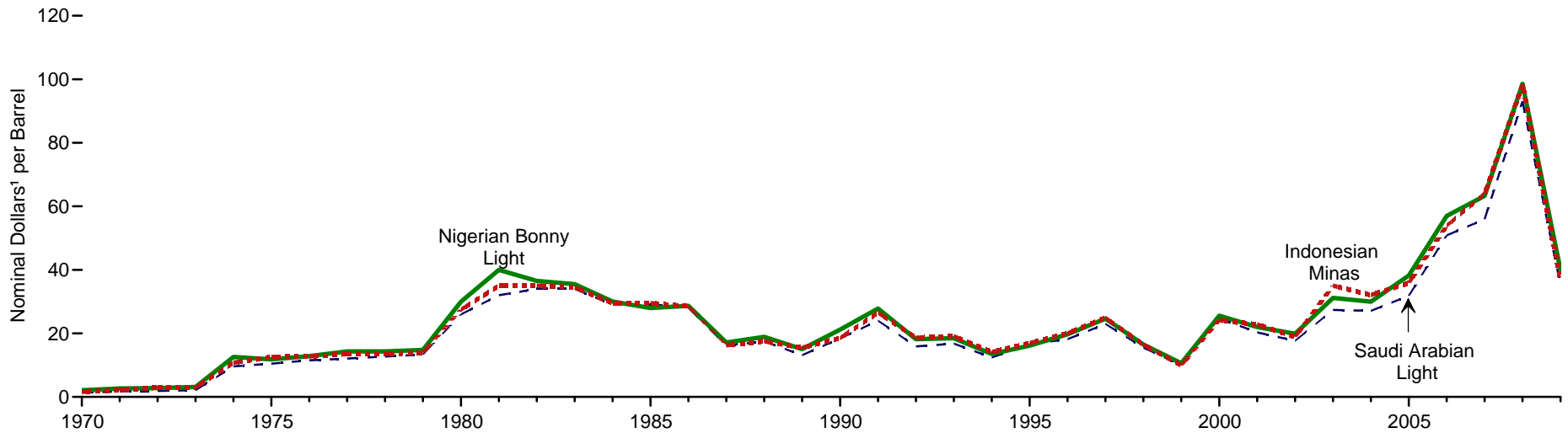
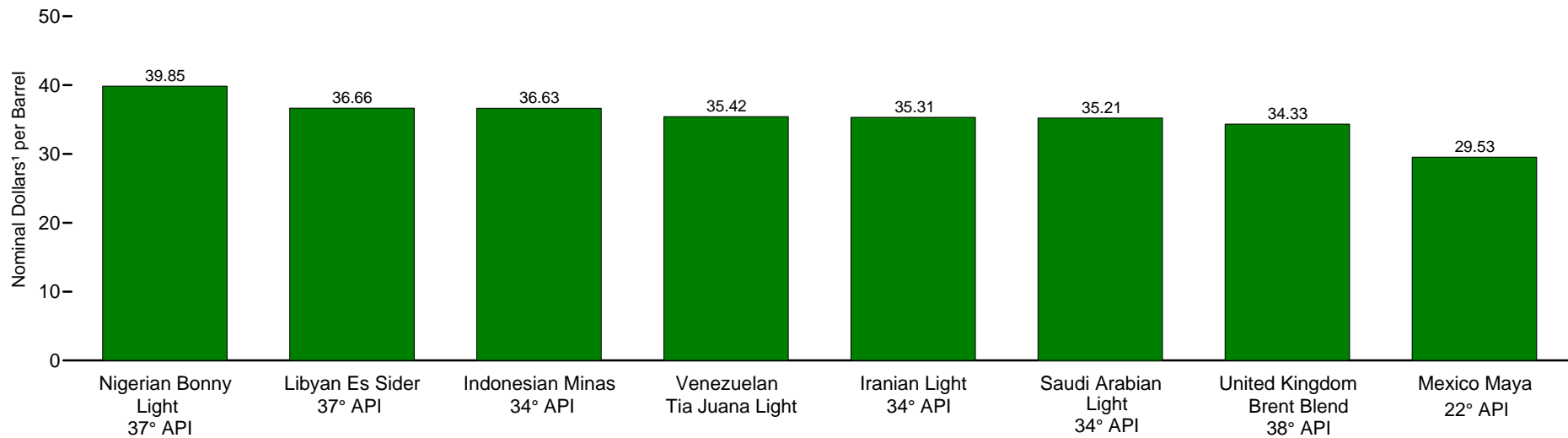


Figure 11.7 Crude Oil Prices by Selected Type

Selected Types, 1970-2009



Selected Types, 2009



¹ See "Nominal Dollars" in Glossary.

Note: Prices are as of the Friday that is closest to January 1, except in 1987, when prices

are as of the first Friday in February. See "API" and "API Gravity" in Glossary.

Source: Table 11.7.