

Executive Summary

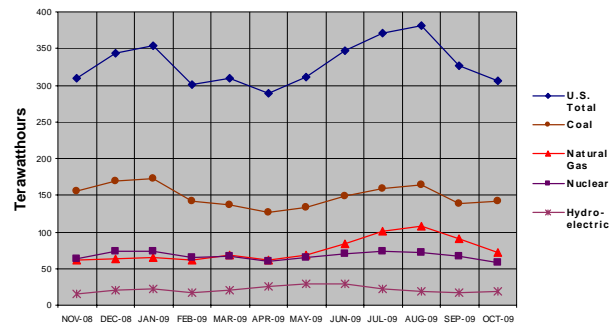
Generation: Net generation in the United States dropped by 3.8 percent from October 2008 to October 2009. This was the 15th consecutive month that net generation was down compared to the same calendar month in the prior year. The Federal Reserve reported that industrial production was 7.1 percent lower than it had been in October 2008, the 16th consecutive month that same-month industrial production was lower than it had been in the previous year. The National Oceanic and Atmospheric Administration (NOAA) reported that October 2009 was the third coolest October on record. Accordingly, total population-weighted heating degree days for the contiguous United States were 17.4 percent above the average for the month of October. October 2008 had gone into into the record books as the 44th coolest since recordkeeping began in 1895.

The drop in coal-fired generation was the largest absolute fuel-specific decline from October 2008 to October 2009 as it fell by 11,592 thousand megawatthours, or 7.6 percent. Declines in Pennsylvania, Tennessee, Indiana, Alabama, and West Virginia accounted for 56.3 percent of the national decline. The October decline was the tenth consecutive month of relatively large drops in coal-fired generation from the same month in the prior year, though it was not as precipitous as the drop of 15.3 percent in March or the decline of 15.1 percent in February. Generation from natural gas-fired plants was 1.6 percent lower than it was in October 2008.

Generation from conventional hydroelectric sources was up by 29.8 percent from October 2008 to October 2009. The rise in generation from hydroelectric sources was the largest absolute fuel-specific increase from October 2008 to October 2009. According to NOAA, the U.S. recorded its wettest October in the 115-year period of record. The nationwide average precipitation of 4.15 inches was nearly double the long-term average of 2.11 inches. Generation increases in Alabama, California, and Tennessee composed 59.5 percent of the national increase in conventional hydroelectric generation.

Wind generation was up by 34.7 percent. The increased wind generation in Iowa, Texas, and Wyoming accounted for 54.2 percent of the national rise in wind generation. Nuclear generation was down 8.1 percent. Petroleum liquid-fired generation was down fractionally compared to a year ago, and its overall share of net generation continued to be quite small compared to coal, nuclear, natural gas-fired, and hydroelectric sources.

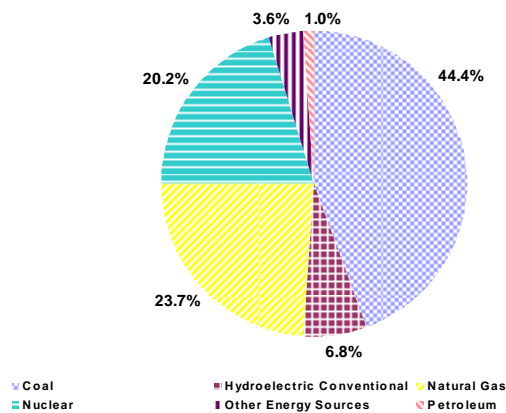
Figure 1: Net Generation by Major Energy Source: Total (All Sectors), November 2008 through October 2009



Year-to-date, total net generation was down 4.6 percent from 2008 levels. Net generation attributable to coal-fired plants was down 12.4 percent. Nuclear generation was down 0.4 percent. Generation from petroleum liquids was down 11.4 percent, while natural gas-fired generation was up by 3.9 percent year-to-date. The year-to-date wind generation total was up 29.1 percent. Wind is now the largest source of non-hydroelectric renewable electricity.

Year-to-date, coal-fired plants contributed 44.4 percent of the Nation's electric power. Nuclear plants contributed 20.2 percent, while 23.7 percent was generated at natural gas-fired plants. Of the 1.0 percent generated by petroleum-fired plants, petroleum liquids represented 0.7 percent, with the remainder from petroleum coke. Conventional hydroelectric power provided 6.8 percent of the total, while other renewables (biomass, geothermal, solar, and wind) and other miscellaneous energy sources generated the remaining 3.6 percent of electric power (Figure 2).

Figure 2: Net Generation Shares by Energy Source: Total (All Sectors), Year-to-Date through October, 2009



Consumption of Fuels: Consumption of coal for power generation in October 2009 was down 6.6 percent compared to October 2008. For the same time period, consumption of petroleum liquids was up 0.7 percent, while petroleum coke fell 44.6 percent. Consumption of natural gas fell 1.7 percent.

Fuel Stocks, Electric Power Sector, October 2009

Total electric power sector coal stocks increased between October 2008 and October 2009 by 44.6 million tons. Stocks of bituminous coal (including coal synfuel) increased by 54.7 percent, or 34.2 million tons between October 2008 and October 2009 (from 62.5 to 96.7 million tons). Subbituminous coal stocks grew by 9.6 million tons between October 2008 and October 2009 (from 90.2 to 99.8 million tons). October 2009 was the 15th consecutive month that coal stocks were higher than the same month in the prior year.

Electric power sector liquid petroleum stocks totaled 41.7 million barrels at the end of October 2009, a decrease of 2.9 percent (1.3 million barrels) from October 2008. October 2009 stocks were 1.8 percent (0.8 million barrels) lower than at the end of September 2009.

Fuel Receipts and Costs, All Sectors, October 2009

In October 2009, the price of coal and petroleum liquids to electricity generators decreased from the previous month, while the price of natural gas increased by 25.8 percent. Receipts of all three categories of fossil fuels decreased from September to October.

The average price paid for coal in October 2009 was \$2.17 per MMBtu, down 0.9 percent from the price paid in September and down 1.4 percent from the price paid in October 2008. Coal prices ordinarily remain constant but significant fluctuations do occur when there is an interruption in production (e.g., a mine strike) or in transportation (e.g., a rail strike or a frozen waterway). Receipts, however, do fluctuate. The October 2009 receipts of coal (77.9 million tons) decreased 2.3 percent when compared with September 2009 and 17.3 percent when compared with October 2008.

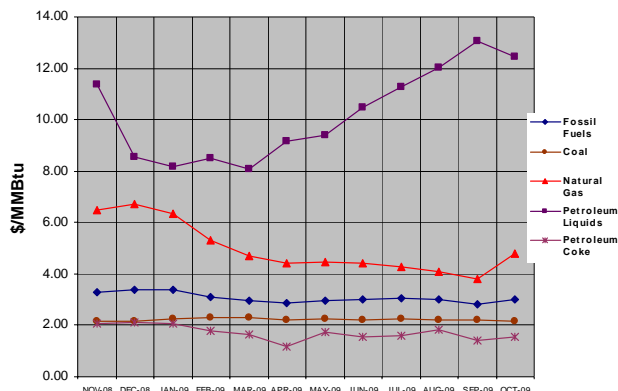
The average price paid for petroleum liquids decreased from \$13.07 per MMBtu in September 2009 to \$12.43 in October. This was a 4.9-percent decrease from September. The price also decreased 18.8 percent from October 2008. This large decrease was actually a return to more normal levels. During most of 2008, the Nation experienced remarkably high petroleum prices attributable to high world demand. Receipts of petroleum liquids in October 2009 were 2.8 million barrels, a relatively small decrease of 3.9 percent from September 2009 and a large decrease (39.9 percent) from October 2008. While prices were

returning to normal, receipts were also decreasing due to lower U.S. demand for petroleum.

During 2008, the high prices of petroleum drove up the demand for natural gas, thereby driving up gas prices. However, like petroleum prices, natural gas prices are returning to normal. This is reflected in the 29.5-percent decrease from October 2008 to October 2009. In spite of this trend of decreasing gas prices, the average price paid for natural gas by electricity generators in October increased 25.8 percent from the September 2009 level of \$3.80 per MMBtu. Colder weather helped increase natural gas prices, as heating demand rose with cooler-than-normal temperatures in many areas of the country. Receipts of natural gas were 643.2 million Mcf, down 18.1 percent from September 2009 and about the same as October 2008.

The overall price paid by electricity generating plants for fossil fuels was \$3.01 per MMBtu in October 2009, a 7.5-percent increase from September 2009 and a 14.5-percent decrease from October 2008. Year-to-date (January through October) 2009 prices compared to the same period last year were up 8.3 percent for coal, down 41.8 percent for petroleum liquids, and down 51.9 percent for natural gas. Year-to-date 2009 receipts compared to the same period last year were down 7.7 percent for coal and 9.7 percent for petroleum liquids. Natural gas year-to-date receipts were up by 2.7 percent.

Figure 3: Electric Power Industry Fuel Costs, November 2008 through October 2009



Sales, Revenue, and Average Retail Price, October 2009

The average retail price of electricity for October 2009 was 9.81 cents per kilowatt-hour (kWh), 3.9 percent lower than September 2009 when the average retail price of electricity was 10.21 cents per kWh, and 2.3 percent lower than October 2008, when the price was 10.04 cents per kWh. Retail sales between October 2008 and October 2009 decreased 1.9 percent led by a 6.7-percent decline in the industrial sector and a 7.8-percent decline in the transportation sector. The average price of residential electricity for October 2009 decreased 0.15 cents per kWh to 11.76 cents per kWh from October 2008 and was down

from 12.06 cents per kWh in September 2009. At 11.76 cents per kWh, the average residential price of electricity decreased by 1.3 percent from October 2008.

Sales: For October 2009, sales in the residential sector increased by 2.4 percent, while sales in the commercial and industrial sectors decreased by 2.0 and 6.7 percent, respectively, as compared to October 2008. For the month, total retail sales were 285.5 billion kWh, a decrease of 23.6 billion kWh from September 2009, and a decrease of 1.9 percent or 5.4 billion kWh from October 2008. Year-to-date 2009 sales were 2,999.8 billion kWh, a 4.4-percent decrease from the same period in 2008.

Revenue: Total retail revenues in October 2009 were \$28.0 billion, reflecting a decrease in revenue of 4.2 percent from October 2008, and an 11.3-percent decrease from September 2009. For October 2009, residential sector retail revenues increased 1.2 percent from October 2008, while the commercial and industrial sector retail revenues decreased by 4.6 percent and 13.8 percent, respectively. Year-to-date 2009 revenue decreased by 2.7 percent from the same period in 2008.

Average Retail Price: For the month, average residential retail prices decreased to 11.76 cents per kWh from 12.06 cents per kWh in September 2009, and they were 1.3

percent lower than October 2008 when the price was 11.91 cents per kWh. The October 2009 average commercial retail price was 10.22 cents per kWh, a 2.7-percent decrease from October 2008 and also down 2.8 percent from September 2009. The average industrial retail price for October 2009 declined to 6.68 cents per kWh, a 7.6-percent decrease from October 2008 and down from 6.99 cents per kWh in September 2009. Year-to-date 2009 average retail prices increased to 10.02 cents per kWh, a 1.8-percent increase over the same period for 2008 (Figure 4).

Figure 4: Average Retail Price of Electricity to Ultimate Customers by End-Use Sector, Year-to-Date through October 2009 and 2008

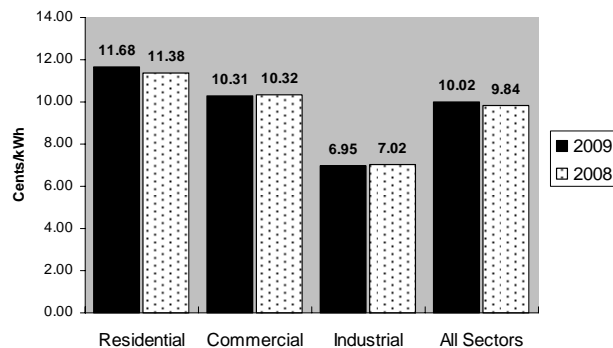


Table ES1.A. Total Electric Power Industry Summary Statistics, 2009 and 2008

October											
Net Generation and Consumption of Fuels											
Items	Total (All Sectors)			Electric Power Sector				Commercial		Industrial	
				Electric Utilities		Independent Power Producers					
	Oct 2009	Oct 2008	% Change	Oct 2009	Oct 2008	Oct 2009	Oct 2008	Oct 2009	Oct 2008	Oct 2009	Oct 2008
Net Generation (thousand megawatthours)											
Coal ¹	141,551	153,143	-7.6	105,705	111,056	34,583	40,561	78	99	1,184	1,426
Petroleum Liquids ²	1,855	1,856	.0	1,490	1,426	275	333	11	6	78	91
Petroleum Coke.....	685	1,348	-49.2	211	592	381	614	--	1	92	141
Natural Gas ³	71,837	72,767	-1.3	26,253	26,714	38,992	39,612	323	334	6,269	6,107
Other Gases ⁴	947	777	21.8	6	1	274	214	--	--	666	562
Nuclear.....	57,688	62,793	-8.1	30,109	32,630	27,579	30,163	--	--	--	--
Hydroelectric Conventional.....	19,633	15,120	29.8	17,692	13,812	1,797	1,210	5	4	138	95
Other Renewables.....	11,519	10,104	14.0	1,121	835	7,951	6,795	133	118	2,314	2,356
Wood and Wood-Derived Fuels ⁵	3,103	3,127	-.8	131	141	690	663	2	2	2,280	2,321
Other Biomass ⁶	1,370	1,332	2.8	97	98	1,107	1,083	132	116	34	35
Geothermal.....	1,185	1,278	-7.2	99	100	1,086	1,178	--	--	--	--
Solar Thermal and Photovoltaic ⁷	59	58	2.2	5	1	54	57	--	--	--	--
Wind.....	5,802	4,309	34.7	788	495	5,015	3,814	--	--	--	--
Hydroelectric Pumped Storage.....	-385	-497	22.4	-271	-399	-114	-97	--	--	--	--
Other Energy Sources ⁸	916	820	11.7	44	44	510	508	65	62	297	206
All Energy Sources.....	306,245	318,232	-3.8	182,361	186,711	112,229	119,912	616	624	11,040	10,984
Consumption of Fossil Fuels for Electricity Generation											
Coal (1000 tons) ¹	75,317	80,624	-6.6	55,645	57,711	19,249	22,409	22	28	401	476
Petroleum Liquids (1000 bbls) ²	3,130	3,109	.7	2,652	2,509	384	501	14	8	79	91
Petroleum Coke (1000 tons).....	263	474	-44.6	85	196	157	242	--	*	22	36
Natural Gas (1000 Mcf) ³	553,363	561,175	-1.4	221,643	225,505	286,383	292,374	2,595	2,496	42,742	40,801
Consumption of Fossil Fuels for Useful Thermal Output											
Coal (1000 tons) ¹	1,727	1,929	-10.5	--	--	267	322	122	134	1,339	1,474
Petroleum Liquids (1000 bbls) ²	462	536	-13.8	--	--	113	111	9	13	340	413
Petroleum Coke (1000 tons).....	114	106	7.4	--	--	12	12	--	1	103	93
Natural Gas (1000 Mcf) ³	68,924	69,351	-.6	--	--	25,763	27,800	2,384	2,362	40,777	39,189
Consumption of Fossil Fuels for Electricity Generation and Useful Thermal Output											
Coal (1000 tons) ¹	77,044	82,553	-6.7	55,645	57,711	19,516	22,731	144	162	1,740	1,950
Petroleum Liquids (1000 bbls) ²	3,592	3,645	-1.5	2,652	2,509	497	612	23	21	420	504
Petroleum Coke (1000 tons).....	377	581	-35.1	85	196	168	254	--	2	124	129
Natural Gas (1000 Mcf) ³	622,287	630,527	-1.3	221,643	225,505	312,146	320,174	4,979	4,857	83,519	79,990
Fuel Stocks (end-of-month)											
Coal (1000 tons) ⁹	205,374	160,296	28.1	162,019	123,909	39,961	33,425	356	348	3,038	2,614
Petroleum Liquids (1000 bbls) ²	48,229	46,352	4.0	26,046	27,746	15,638	15,189	562	392	5,983	3,025
Petroleum Coke (1000 tons).....	1,701	1,119	52.0	749	435	470	263	*	*	482	421

Retail Sales, Retail Revenue and Average Retail Price per Kilowatthour

Items	Total U.S. Electric Power Industry								
	Retail Sales (Million kWh) ¹⁰			Retail Revenue (Million Dollars)			Average Retail Price (Cents/kWh)		
	Oct 2009	Oct 2008	% Change	Oct 2009	Oct 2008	% Change	Oct 2009	Oct 2008	% Change
Residential.....	98,373	96,051	2.4	11,569	11,436	1.2	11.76	11.91	-1.3
Commercial ¹¹	109,924	112,147	-2.0	11,238	11,778	-4.6	10.22	10.50	-2.7
Industrial ¹¹	76,632	82,117	-6.7	5,122	5,939	-13.8	6.68	7.23	-7.6
Transportation ¹¹	580	629	-7.8	65	69	-4.6	11.28	10.90	3.5
All Sectors.....	285,509	290,943	-1.9	27,994	29,221	-4.2	9.81	10.04	-2.3

¹ Anthracite, bituminous, subbituminous, lignite, waste coal, and coal synfuel.

² Distillate fuel oil, residual fuel oil, jet fuel, and kerosene.

³ Natural gas includes a small amount of supplemental gaseous fuels that cannot be identified separately.

⁴ Blast furnace gas, propane gas, and other manufactured and waste gases derived from fossil fuels.

⁵ Wood, black liquor, and other wood waste.

⁶ Biogenic municipal solid waste, landfill gas, sludge waste, agriculture byproducts, and other biomass.

⁷ Solar thermal and photovoltaic energy.

⁸ Non-biogenic municipal solid waste, batteries, chemicals, hydrogen, pitch, purchased steam, sulfur, tire-derived fuel, and miscellaneous technologies.

⁹ Anthracite, bituminous, subbituminous, coal synfuel, and lignite; excludes waste coal.

¹⁰ Retail sales and net generation may not correspond exactly for a particular month for a variety of reasons (e.g., sales data may include imported electricity). Net generation is for the calendar month while retail sales and associated revenue accumulate from bills collected for periods of time (28 to 35 days) that vary dependent upon customer class and consumption occurring in and outside the calendar month.

¹¹ See Technical notes for additional information on the Commercial, Industrial, and Transportation sectors.

* = Value is less than half of the smallest unit of measure (e.g., for values with no decimals, the smallest unit is "1" then values under 0.5 are shown as "**").

Notes: • Beginning with the collection of Form EIA-923 in January 2008, the methodology to allocate total fuel consumption for electricity generation and consumption for useful thermal output was changed. The new methodology was retroactively applied to 2004-2007. See the Technical Notes (Appendix C) for further information. • Beginning with 2001 data, non-biogenic municipal solid waste and tire-derived fuels are reclassified as non-renewable energy sources and included in "Other". Biogenic municipal solid waste is included in "Other Renewables." • Values for 2008 and 2009 are preliminary and are estimates based on samples. See Technical Notes for a discussion of the sample designs. • Totals may not equal sum of components because of independent rounding. • Percent difference is calculated before rounding. • Monetary values are expressed in nominal terms.

Sources: Energy Information Administration, Form EIA-826, "Monthly Electric Sales and Revenue With State Distributions Report;" Energy Information Administration, Form EIA-923, "Power Plant Operations Report."

Table ES1.B. Total Electric Power Industry Summary Statistics, Year-to-Date 2009 and 2008

January through October											
Net Generation and Consumption of Fuels											
Items	Total (All Sectors)			Electric Power Sector				Commercial		Industrial	
				Electric Utilities		Independent Power Producers					
	2009	2008	% Change	2009	2008	2009	2008	2009	2008	2009	2008
Net Generation (thousand megawatthours)											
Coal ¹	1,463,892	1,670,607	-12.4	1,089,307	1,234,222	361,492	420,882	904	1,028	12,188	14,476
Petroleum Liquids ²	23,002	25,947	-11.4	16,005	18,320	5,690	6,377	125	74	1,182	1,176
Petroleum Coke.....	11,243	11,975	-6.1	4,771	4,905	5,250	5,805	3	4	1,220	1,261
Natural Gas ³	780,930	751,661	3.9	285,034	269,440	430,949	415,944	3,353	3,422	61,593	62,855
Other Gases ⁴	8,619	10,144	-15.0	59	28	2,453	2,783	--	--	6,108	7,332
Nuclear.....	667,241	669,842	-.4	351,018	354,100	316,223	315,742	--	--	--	--
Hydroelectric Conventional.....	225,781	212,039	6.5	204,623	192,041	19,513	18,288	72	65	1,573	1,644
Other Renewables.....	110,961	101,558	9.3	10,288	8,889	77,195	67,320	1,348	1,382	22,130	23,967
Wood and Wood-Derived Fuels ⁵	30,437	32,455	-6.2	1,425	1,542	7,295	7,441	19	20	21,698	23,452
Other Biomass ⁶	13,998	14,266	-1.9	997	1,005	11,239	11,384	1,329	1,362	433	515
Geothermal.....	12,026	12,384	-2.9	985	989	11,041	11,395	--	--	--	--
Solar Thermal and Photovoltaic ⁷	732	802	-8.7	18	14	715	788	--	--	--	--
Wind.....	53,769	41,651	29.1	6,864	5,339	46,905	36,313	--	--	--	--
Hydroelectric Pumped Storage.....	-3,690	-5,248	29.7	-2,801	-4,303	-889	-945	--	--	--	--
Other Energy Sources ⁸	9,279	8,742	6.1	453	461	5,267	5,276	643	661	2,916	2,344
All Energy Sources.....	3,297,257	3,457,268	-4.6	1,958,756	2,078,104	1,223,144	1,257,473	6,448	6,636	108,909	115,055
Consumption of Fossil Fuels for Electricity Generation											
Coal (1000 tons) ¹	776,280	872,623	-11.0	572,159	637,445	199,777	230,164	266	298	4,078	4,715
Petroleum Liquids (1000 bbls) ²	38,749	43,600	-11.1	28,306	32,084	8,912	10,176	159	117	1,372	1,223
Petroleum Coke (1000 tons).....	4,210	4,565	-7.8	1,804	1,942	2,086	2,293	1	1	319	329
Natural Gas (1000 Mcf) ³	6,066,717	5,871,822	3.3	2,411,420	2,322,742	3,209,687	3,106,137	26,333	26,268	419,276	416,674
Consumption of Fossil Fuels for Useful Thermal Output											
Coal (1000 tons) ¹	17,609	19,683	-10.5	--	--	3,026	3,232	1,257	1,436	13,326	15,014
Petroleum Liquids (1000 bbls) ²	6,195	6,541	-5.3	--	--	1,148	1,166	156	154	4,891	5,221
Petroleum Coke (1000 tons).....	882	984	-10.3	--	--	111	99	5	6	766	878
Natural Gas (1000 Mcf) ³	664,160	697,655	-4.8	--	--	264,456	294,961	22,801	24,649	376,903	378,045
Consumption of Fossil Fuels for Electricity Generation and Useful Thermal Output											
Coal (1000 tons) ¹	793,889	892,305	-11.0	572,159	637,445	202,803	233,396	1,523	1,735	17,404	19,730
Petroleum Liquids (1000 bbls) ²	44,944	50,141	-10.4	28,306	32,084	10,060	11,342	315	271	6,263	6,444
Petroleum Coke (1000 tons).....	5,091	5,549	-8.2	1,804	1,942	2,197	2,392	6	7	1,084	1,207
Natural Gas (1000 Mcf) ³	6,730,876	6,569,476	2.5	2,411,420	2,322,742	3,474,143	3,401,098	49,134	50,917	796,179	794,719

Retail Sales, Retail Revenue and Average Retail Price per Kilowatthour

Items	Total U.S. Electric Power Industry								
	Retail Sales (Million kWh) ⁹			Retail Revenue (Million Dollars)			Average Retail Price (Cents/kWh)		
	2009	2008	% Change	2009	2008	% Change	2009	2008	% Change
Residential.....	1,146,177	1,158,969	-1.1	133,890	131,902	1.5	11.68	11.38	2.6
Commercial ¹⁰	1,112,808	1,140,613	-2.4	114,730	117,705	-2.5	10.31	10.32	-1
Industrial ¹⁰	734,605	831,213	-11.6	51,086	58,382	-12.5	6.95	7.02	-1.0
Transportation ¹⁰	6,257	6,366	-1.7	714	723	-1.3	11.40	11.36	.4
All Sectors.....	2,999,847	3,137,163	-4.4	300,420	308,712	-2.7	10.02	9.84	1.8

¹ Anthracite, bituminous, subbituminous, lignite, waste coal, and coal synfuel.

² Distillate fuel oil, residual fuel oil, jet fuel, kerosene, and waste oil.

³ Natural gas includes a small amount of supplemental gaseous fuels that cannot be identified separately.

⁴ Blast furnace gas, propane gas, and other manufactured and waste gases derived from fossil fuels.

⁵ Wood, black liquor, and other wood waste.

⁶ Biogenic municipal solid waste, landfill gas, sludge waste, agriculture byproducts, and other biomass.

⁷ Solar thermal and photovoltaic energy.

⁸ Non-biogenic municipal solid waste, batteries, chemicals, hydrogen, pitch, purchased steam, sulfur, tire-derived fuel, and miscellaneous technologies.

⁹ Retail sales and net generation may not correspond exactly for a particular month for a variety of reasons (e.g., sales data may include imported electricity). Net generation is for the calendar month while retail sales and associated revenue accumulate from bills collected for periods of time (28 to 35 days) that vary dependent upon customer class and consumption occurring in and outside the calendar month.

¹⁰ See Technical notes for additional information on the Commercial, Industrial, and Transportation sectors.

Notes: • Beginning with the collection of Form EIA-923 in January 2008, the methodology to allocate total fuel consumption for electricity generation and consumption for useful thermal output was changed. The new methodology was retroactively applied to 2004-2007. See the Technical Notes (Appendix C) for further information. • Beginning with 2001 data, non-biogenic municipal solid waste and tire-derived fuels are reclassified as non-renewable energy sources and included in "Other". Biogenic municipal solid waste is included in "Other Renewables." • Values for 2008 and 2009 are preliminary. Values from Forms EIA-826 and EIA-923 for 2008 and 2009 are estimates based on samples - see Technical Notes for a discussion of the sample designs. • Totals may not equal sum of components because of independent rounding. • Percent difference is calculated before rounding.

Sources: Energy Information Administration, Form EIA-826, "Monthly Electric Sales and Revenue With State Distributions Report;" Energy Information Administration, Form EIA-923, "Power Plant Operations Report."

Table ES2.A. Summary Statistics: Receipts and Cost of Fossil Fuels for the Electric Power Industry by Sector, Physical Units, 2009 and 2008

October										
Total (All Sectors)										
Items	Receipts (physical units)		Cost (dollars/ physical unit)		Number of Plants ¹		Year-to-Date			
							Receipts (physical units)		Cost (dollars/ physical unit)	
	Oct 2009	Oct 2008	Oct 2009	Oct 2008	Oct 2009	Oct 2008	Oct 2009	Oct 2008	Oct 2009	Oct 2008
Coal (1000 tons) ²	77,925	94,201	42.97	43.88	603	626	824,793	893,958	44.38	40.94
Petroleum Liquids (1000 barrels) ³ ..	2,760	4,594	75.56	94.53	1,343	1,358	49,236	54,516	60.05	104.22
Petroleum Coke (1000 tons)	602	640	44.15	62.45	39	41	5,854	6,068	47.08	53.41
Natural Gas (1000 Mcf) ⁴	644,903	643,634	4.89	6.96	1,466	1,517	6,886,136	6,705,339	4.69	9.78
Electric Utilities										
Items	Receipts (physical units)		Cost (dollars/ physical unit)		Number of Plants		Year-to-Date			
							Receipts (physical units)		Cost (dollars/ physical unit)	
	Oct 2009	Oct 2008	Oct 2009	Oct 2008	Oct 2009	Oct 2008	Oct 2009	Oct 2008	Oct 2009	Oct 2008
Coal (1000 tons) ²	57,274	67,020	44.01	44.25	314	326	595,756	636,966	45.17	40.85
Petroleum Liquids (1000 barrels) ³ ..	1,994	2,292	77.37	102.44	876	882	28,813	33,198	61.57	104.28
Petroleum Coke (1000 tons)	211	282	55.97	63.50	8	9	2,468	2,351	55.64	58.59
Natural Gas (1000 Mcf) ⁴	224,257	228,647	5.78	7.16	557	560	2,455,811	2,341,758	5.57	9.81
Independent Power Producers										
Items	Receipts (physical units)		Cost (dollars/ physical unit)		Number of Plants		Year-to-Date			
							Receipts (physical units)		Cost (dollars/ physical unit)	
	Oct 2009	Oct 2008	Oct 2009	Oct 2008	Oct 2009	Oct 2008	Oct 2009	Oct 2008	Oct 2009	Oct 2008
Coal (1000 tons) ²	18,884	25,013	38.24	40.82	153	159	209,974	235,305	40.37	39.34
Petroleum Liquids (1000 barrels) ³ ..	371	1,340	78.10	86.78	234	243	10,151	11,073	57.89	107.76
Petroleum Coke (1000 tons)	280	207	33.21	47.37	18	18	2,256	2,318	34.21	39.78
Natural Gas (1000 Mcf) ⁴	323,480	322,651	4.48	6.55	512	516	3,501,879	3,413,053	4.20	9.74
Commercial Sector										
Items	Receipts (physical units)		Cost (dollars/ physical unit)		Number of Plants		Year-to-Date			
							Receipts (physical units)		Cost (dollars/ physical unit)	
	Oct 2009	Oct 2008	Oct 2009	Oct 2008	Oct 2009	Oct 2008	Oct 2009	Oct 2008	Oct 2009	Oct 2008
Coal (1000 tons) ²	132	168	65.83	63.46	17	18	1,503	1,710	65.68	58.45
Petroleum Liquids (1000 barrels) ³ ..	25	53	83.26	93.14	86	89	536	504	62.86	104.91
Petroleum Coke (1000 tons)	--	1	--	62.76	--	1	9	11	48.87	53.91
Natural Gas (1000 Mcf) ⁴	5,299	4,957	5.19	8.06	100	109	51,795	53,950	5.41	9.55
Industrial Sector										
Items	Receipts (physical units)		Cost (dollars/ physical unit)		Number of Plants		Year-to-Date			
							Receipts (physical units)		Cost (dollars/ physical unit)	
	Oct 2009	Oct 2008	Oct 2009	Oct 2008	Oct 2009	Oct 2008	Oct 2009	Oct 2008	Oct 2009	Oct 2008
Coal (1000 tons).....	1,634	2,000	59.35	68.07	119	123	17,560	19,977	63.63	61.31
Petroleum Liquids (1000 barrels) ...	371	908	62.79	86.11	147	144	9,736	9,741	57.67	99.95
Petroleum Coke (1000 tons)	110	150	49.25	81.24	13	13	1,121	1,389	54.13	67.39
Natural Gas (1000 Mcf).....	91,867	87,379	4.10	7.92	297	332	876,650	896,578	4.17	9.87

¹ Represents the number of plants for which receipts data were collected for this month. A plant using more than one fuel may be counted multiple times. The total numbers of electric power plants using coal, petroleum liquids, petroleum coke, and natural gas in the country as of January 1, 2008 are: 603; 1,501; 44; and 1,794 respectively.

² Anthracite, bituminous, subbituminous, lignite, waste coal, and coal synfuel.

³ Distillate fuel oil, residual fuel oil, jet fuel, kerosene, and waste oil.

⁴ Natural gas includes a small amount of supplemental gaseous fuels that cannot be identified separately.

Notes: • Due to different reporting requirements between the Form EIA-923 and historical FERC Form 423, the receipts data from 2008 and on are not directly comparable to prior years. For more information, please see the Technical Notes in Appendix C. • Values for 2008 and 2009 are preliminary. • Mcf = thousand cubic feet.

Source: Energy Information Administration, Form EIA-923, "Power Plant Operations Report."

Table ES2.B. Summary Statistics: Receipts and Cost of Fossil Fuels for the Electric Power Industry by Sector, Btus, 2009 and 2008

October										
Total (All Sectors)										
Items	Receipts (billion Btu)		Cost (dollars/million Btu)		Number of Plants ¹		Year-to-Date			
							Receipts (billion Btu)		Cost (dollars/million Btu)	
	October 2009	October 2008	October 2009	October 2008	October 2009	October 2008	October 2009	October 2008	October 2009	October 2008
Coal ²	1,541,314	1,877,028	2.17	2.20	603	626	16,377,223	17,803,272	2.23	2.06
Petroleum Liquids ³	16,781	28,388	12.43	15.30	1,343	1,358	301,077	336,778	9.82	16.87
Petroleum Coke.....	16,999	18,270	1.56	2.19	39	41	166,801	172,599	1.65	1.88
Natural Gas ⁴	659,907	660,795	4.78	6.78	1,466	1,517	7,059,954	6,885,024	4.58	9.52
Fossil Fuels.....	2,235,002	2,584,481	3.01	3.52	2,712	2,754	23,905,055	25,197,673	3.02	4.30
Electric Utilities										
Items	Receipts (billion Btu)		Cost (dollars/million Btu)		Number of Plants		Year-to-Date			
							Receipts (billion Btu)		Cost (dollars/million Btu)	
	October 2009	October 2008	October 2009	October 2008	October 2009	October 2008	October 2009	October 2008	October 2009	October 2008
Coal ²	1,147,424	1,350,141	2.20	2.20	314	326	11,963,506	12,813,763	2.25	2.03
Petroleum Liquids ³	12,202	14,208	12.65	16.53	876	882	177,300	206,294	10.01	16.78
Petroleum Coke.....	5,942	8,106	1.99	2.21	8	9	70,435	66,966	1.95	2.06
Natural Gas ⁴	229,049	234,490	5.66	6.98	557	560	2,516,010	2,402,570	5.43	9.56
Fossil Fuels.....	1,394,617	1,606,945	2.86	3.02	1,389	1,404	14,727,251	15,489,592	2.88	3.40
Independent Power Producers										
Items	Receipts (billion Btu)		Cost (dollars/million Btu)		Number of Plants		Year-to-Date			
							Receipts (billion Btu)		Cost (dollars/million Btu)	
	October 2009	October 2008	October 2009	October 2008	October 2009	October 2008	October 2009	October 2008	October 2009	October 2008
Coal ²	354,876	479,081	2.04	2.13	153	159	3,993,612	4,507,549	2.12	2.05
Petroleum Liquids ³	2,163	8,208	13.38	14.17	234	243	60,756	66,635	9.67	17.91
Petroleum Coke.....	7,934	5,877	1.17	1.67	18	18	64,230	65,912	1.20	1.40
Natural Gas ⁴	331,207	331,634	4.38	6.37	512	516	3,590,882	3,504,904	4.10	9.49
Fossil Fuels.....	696,181	824,799	3.18	3.95	751	760	7,709,481	8,145,000	3.09	5.38
Commercial Sector										
Items	Receipts (billion Btu)		Cost (dollars/million Btu)		Number of Plants		Year-to-Date			
							Receipts (billion Btu)		Cost (dollars/million Btu)	
	October 2009	October 2008	October 2009	October 2008	October 2009	October 2008	October 2009	October 2008	October 2009	October 2008
Coal ²	2,911	3,684	2.99	2.90	17	18	32,961	37,269	2.99	2.68
Petroleum Liquids ³	145	325	14.20	15.21	86	89	3,242	3,105	10.39	17.04
Petroleum Coke.....	--	29	--	2.36	--	1	257	297	1.73	1.96
Natural Gas ⁴	5,410	5,077	5.08	7.87	100	109	52,987	55,341	5.28	9.31
Fossil Fuels.....	8,466	9,115	4.52	6.11	152	157	89,447	96,012	4.62	6.96
Industrial Sector										
Items	Receipts (billion Btu)		Cost (dollars/million Btu)		Number of Plants		Year-to-Date			
							Receipts (billion Btu)		Cost (dollars/million Btu)	
	October 2009	October 2008	October 2009	October 2008	October 2009	October 2008	October 2009	October 2008	October 2009	October 2008
Coal.....	36,103	44,122	2.69	3.09	119	123	387,143	444,691	2.89	2.76
Petroleum Liquids.....	2,271	5,646	10.25	13.85	147	144	59,777	60,744	9.39	16.03
Petroleum Coke.....	3,123	4,258	1.74	2.86	13	13	31,879	39,425	1.90	2.37
Natural Gas.....	94,241	89,595	4.00	7.73	297	332	900,076	922,209	4.06	9.59
Fossil Fuels.....	135,738	143,622	3.70	6.40	420	433	1,378,875	1,467,069	3.91	7.59

¹ Represents the number of plants for which receipts data were collected for this month. The total number of fossil fuel plants is not a sum of the figures above it because a plant that receives two or more different fuels is only counted once. The total number of electric power plants using coal, petroleum liquids, petroleum coke, and natural gas in the country as of January 1, 2008 are: 603; 1,501; 44; and 1,794 respectively.

² Anthracite, bituminous, subbituminous, lignite, waste coal, and coal symfuel.

³ Distillate fuel oil, residual fuel oil, jet fuel, kerosene, and waste oil.

⁴ Natural gas includes a small amount of supplemental gaseous fuels that cannot be identified separately.

Notes: • Due to different reporting requirements between the Form EIA-923 and historical FERC Form 423, the receipts data from 2008 and on are not directly comparable to prior years. For more information, please see the Technical Notes in Appendix C. • Values for 2008 and 2009 are preliminary.

Source: Energy Information Administration, Form EIA-923, "Power Plant Operations Report."

Table ES3. New U.S. Electric Generating Units by Operating Company, Plant and Month, 2009

Year/Month/Company	Producer Type	Plant	State	Plant ID	Generating Unit ID	Net Summer Capacity (megawatts) ¹	Energy Source	Prime Mover
New Units 2009								
January								
Babcock & Brown Power Op Partners LLC	IPP	Majestic 1	TX	56648	1	79.5	WND	WT
Babcock & Brown Power Op Partners LLC	IPP	South Trent	TX	56649	1	101.2	WND	WT
Canandaigua Power Partners II LLC	IPP	Canandaigua Power Partners II LLC	NY	56633	1	37.5	WND	WT
Canandaigua Power Partners LLC	IPP	Canandaigua Power Partners LLC	NY	56634	1	82.5	WND	WT
Encina Joint Powers Authority	Commercial	Encina Water Pollution Control	CA	10026	EG30	.8	OBG	IC
Enxco Service Corporation	IPP	Shiloh Wind Project 2 LLC	CA	56874	TBD	150.0	WND	WT
Evergreen Wind Power V LLC	IPP	Evergreen Wind Power V LLC	ME	56989	1	57.0	WND	WT
FPL Energy Crystal Lake Wind II LLC	IPP	FPL Energy Crystal Lake Wind II LLC	IA	56925	CL25	200.0	WND	WT
Invenergy Services LLC	IPP	Willow Creek Energy Center	OR	56952	1	72.0	WND	WT
Milwaukee Metro Sewerage Dist.	Commercial	MMSD South Shore Wastewater	WI	55525	3CAT	.9	OBG	IC
Milwaukee Metro Sewerage Dist.	Commercial	MMSD South Shore Wastewater	WI	55525	4CAT	.9	OBG	IC
Noble Wind Operations LLC	IPP	Noble Great Plains Windpark LLC	TX	56905	1	114.0	WND	WT
P P M Energy Inc	IPP	Pebble Springs Wind LLC	OR	56789	1	98.7	WND	WT
PPL Renewable Energy LLC	IPP	Community Refuse Service	PA	56887	GEN 1	1.6	LFG	IC
PPL Renewable Energy LLC	IPP	Community Refuse Service	PA	56887	GEN 2	1.6	LFG	IC
PPL Renewable Energy LLC	IPP	Community Refuse Service	PA	56887	GEN 3	1.6	LFG	IC
PPL Renewable Energy LLC	IPP	Community Refuse Service	PA	56887	GEN 4	1.6	LFG	IC
PPL Renewable Energy LLC	IPP	Northern Tier	PA	56890	GEN 1	1.6	LFG	IC
PacifiCorp	Electric Utility	Glenrock	WY	56841	2	39.0	WND	WT
PacifiCorp	Electric Utility	Rolling Hills	WY	56842	1	99.0	WND	WT
Pacific Gas & Electric Co	Electric Utility	Gateway Generating Station	CA	56476	1	174.6	NG	CT
Pacific Gas & Electric Co	Electric Utility	Gateway Generating Station	CA	56476	2	174.6	NG	CT
Pacific Gas & Electric Co	Electric Utility	Gateway Generating Station	CA	56476	3	183.2	NG	CA
Pyron Wind Farm LLC	IPP	Pyron Wind Farm LLC	TX	56981	1	249.0	WND	WT
South Carolina Pub Serv Auth	Electric Utility	Cross	SC	130	4	610.9	BIT	ST
Turlock Irrigation District	Electric Utility	TID Fuel Cell	CA	56631	TFC	1.2	OBG	FC
UGI Development Co	IPP	Broad Mountain	NY	56911	GEN1	4.7	LFG	GT
UGI Development Co	IPP	Broad Mountain	NY	56911	GEN2	4.7	LFG	GT
February								
AE Power Services LLC	IPP	The Fowler Ridge III Wind Farm	IN	56778	1	99.0	WND	WT
Archer Daniels Midland Co	Industrial	Archer Daniels Midland Clinton	IA	10860	1A	70.3	SUB	ST
Babcock & Brown Power Op Partners LLC	IPP	Butler Ridge	WI	56647	1	54.0	WND	WT
Babcock & Brown Power Op Partners LLC	IPP	Wessington Springs	SD	56650	1	51.0	WND	WT
Enxco Service Corporation	IPP	Hall's Warehouse Solar Project	NJ	56877	TBD	1.7	SUN	PV
Enxco Service Corporation	IPP	Wapsipincon Wind Farm	MN	56876	TBD	100.5	WND	WT
Erie Boulevard Hydropower LP	IPP	Sherman Island	NY	2609	6	1.2	WAT	HY
Invenergy Services LLC	IPP	High Sheldon Wind Farm	NY	56953	1	112.0	WND	WT
Milwaukee Metro Sewerage Dist.	Commercial	MMSD South Shore Wastewater	WI	55525	1CAT	.9	OBG	IC
Ormat Nevada Inc	IPP	OREG 2 Inc	MT	56880	CS5	7.1	WH	BT
P P M Energy Inc	IPP	Hay Canyon Wind Power LLC	OR	56790	1	100.8	WND	WT
P P M Energy Inc	IPP	Moraine II Wind LLC	MN	56794	1	49.5	WND	WT
SunE SR1 Rifle EIC LLC	IPP	WWRF Solar Plant	CO	56922	East	.5	SUN	PV
SunE SR1 Rifle EIC LLC	IPP	WWRF Solar Plant	CO	56922	South	1.2	SUN	PV
Westar Energy Inc	Electric Utility	Emporia Energy Center	KS	56502	6	145.7	NG	GT
Westar Energy Inc	Electric Utility	Emporia Energy Center	KS	56502	7	145.7	NG	GT
Westar Energy Inc	Electric Utility	Flat Ridge Wind Farm	KS	56819	1	50.0	WND	WT
March								
AE Power Services LLC	IPP	Flat Ridge Wind Energy LLC	KS	56879	1	50.0	WND	WT
AE Power Services LLC	IPP	Fowler Ridge Wind Farm LLC	IN	56777	1	201.3	WND	WT
AE Power Services LLC	IPP	Fowler Ridge Wind Farm LLC	IN	56777	2	100.0	WND	WT
AMERESCO Jefferson City LLC	IPP	AMERESCO Jefferson City	MO	56896	1	1.0	LFG	IC
AMERESCO Jefferson City LLC	IPP	AMERESCO Jefferson City	MO	56896	2	1.0	LFG	IC
AMERESCO Jefferson City LLC	IPP	AMERESCO Jefferson City	MO	56896	3	1.0	LFG	IC
Cassia Gulch Wind Park LLC	IPP	Cassia Gulch Wind Park LLC	ID	56935	1	18.9	WND	WT
Cassia Wind Farm LLC	IPP	Cassia Wind Farm LLC	ID	56934	1	10.5	WND	WT
Colorado Energy Management LLC	IPP	Hobbs Generating Station	NM	56458	GT1	159.1	NG	CT
Colorado Energy Management LLC	IPP	Hobbs Generating Station	NM	56458	GT2	159.1	NG	CT
Colorado Energy Management LLC	IPP	Hobbs Generating Station	NM	56458	ST3	283.8	NG	CA
Edison Mission Energy	IPP	Elkhorn Ridge Wind LLC	NE	56947	1	81.0	WND	WT
Granger Electric Co	IPP	Granger Electric of Byron Center	MI	56851	1	1.6	LFG	IC
Granger Electric Co	IPP	Granger Electric of Byron Center	MI	56851	2	1.6	LFG	IC
Granger Electric Co	IPP	Granger Electric of Pinconning	MI	56852	1	1.6	LFG	IC

**Table ES3. New U.S. Electric Generating Units by Operating Company, Plant and Month, 2009
(Continued)**

Year/Month/Company	Producer Type	Plant	State	Plant ID	Generating Unit ID	Net Summer Capacity (megawatts) ¹	Energy Source	Prime Mover
New Units 2009								
Granger Electric Co	IPP	Granger Electric of Pinconning	MI	56852	2	1.6	LFG	IC
Granger Electric Co	IPP	Granger Electric of South Jordan	UT	56853	1	1.6	LFG	IC
Granger Electric Co	IPP	Granger Electric of South Jordan	UT	56853	2	1.6	LFG	IC
Granger Electric Co	IPP	Granger Electric of South Jordan	UT	56853	3	1.6	LFG	IC
SunE WMT7033DC Apple Valley LLC	IPP	Apple Valley (Wal-Mart DC)	CA	57012	1	1.0	SUN	PV
Westar Energy Inc.....	Electric Utility	Central PlainsWind Farm	KS	56818	1	3.0	WND	WT
April								
Archer Daniels Midland Co.....	Industrial	Archer Daniels Midland Clinton	IA	10860	2A	98.4	SUB	ST
Babcock & Brown Power Op Partners LLC	IPP	Texas Gulf Wind	TX	56661	1	283.2	WND	WT
City of Blooming Prairie.....	Electric Utility	Blooming Prairie	MN	1966	6	2.0	DFO	IC
City of Manassas.....	Electric Utility	VMEA 1 Credit Gen	VA	7440	V9-1	2.0	DFO	IC
Duke Energy DEGS Notrees	IPP	Notrees	TX	56961	GE	60.0	WND	WT
Duke Energy DEGS Notrees	IPP	Notrees	TX	56961	VESTA	92.5	WND	WT
East Kentucky Power Coop, Inc	Electric Utility	H L Spurlock	KY	6041	4	308.7	BIT	ST
Encina Joint Powers Authority	Commercial	Encina Water Pollution Control	CA	10026	EG40	.8	OBG	IC
Erie Boulevard Hydropower LP	IPP	Sherman Island	NY	2609	1	6.7	WAT	HY
Iberdrola Renewable Energies USA	IPP	Farmers City Wind LLC	MO	56767	1	144.0	WND	WT
Lower Valley Energy Inc.....	Electric Utility	Swift Creek	WY	6394	3	.8	WAT	HY
Noble Wind Operations LLC.....	IPP	Noble Altona Windpark LLC	NY	56901	1	97.5	WND	WT
Noble Wind Operations LLC.....	IPP	Noble Chateaugay Windpark LLC	NY	56904	1	106.5	WND	WT
Noble Wind Operations LLC.....	IPP	Noble Wethersfield Windpark LLC	NY	56902	1	126.0	WND	WT
P P M Energy Inc	IPP	Buffalo Ridge I LLC	SD	56792	1	50.4	WND	WT
P P M Energy Inc	IPP	Penascal Wind LLC	TX	56795	1	201.6	WND	WT
Tampa Electric Co	Electric Utility	H. L. Culbreath Bayside	FL	7873	5	52.7	NG	GT
Tampa Electric Co	Electric Utility	H. L. Culbreath Bayside	FL	7873	6	52.7	NG	GT
Virginia Electric & Power Co.....	Electric Utility	Ladysmith	VA	7839	5	151.7	NG	GT
Wheat Field Wind Power Project LLC	IPP	Wheat Field Wind Power Project	OR	56854	GEN1	97.0	WND	WT
May								
AMERESCO Stafford LLC	IPP	AMERESCO Stafford	VA	56894	1	1.0	LFG	IC
AMERESCO Stafford LLC	IPP	AMERESCO Stafford	VA	56894	2	1.0	LFG	IC
Ausra CA I LLC.....	IPP	Ausra Kimberlina Solar Generation	CA	56943	1	4.7	SUN	ST
Cannon Power Corporation.....	IPP	Windy Point	WA	56702	WPT1	136.3	WND	WT
Cannon Power Corporation.....	IPP	Windy Point	WA	56702	WPT2	301.3	WND	WT
City of Lamar	Electric Utility	Lamar Plant	CO	508	6	17.3	SUB	ST
City of Springfield	Electric Utility	Dallman	IL	963	4	262.4	BIT	ST
East Kentucky Power Coop, Inc	Electric Utility	Mason County LFGTE	KY	56977	1	2.0	LFG	IC
Franklin Heating Station.....	Commercial	Franklin Heating Station	MN	54224	DG4	2.0	DFO	IC
Gainesville Regional Utilities	Electric Utility	GRU Energy Center at Shands	FL	56518	GT1	3.5	NG	GT
Iberdrola Renewable Energies USA	IPP	Locust Ridge II LLC	PA	56770	1	102.0	WND	WT
Northern States Power Co.....	Electric Utility	Riverside	MN	1927	10	137.6	NG	CT
Northern States Power Co.....	Electric Utility	Riverside	MN	1927	9	137.6	NG	CT
NuCoastal Power Corporation	IPP	Victoria	TX	3443	7	169.3	NG	CT
Omaha Public Power District.....	Electric Utility	Nebraska City	NE	6096	2	621.2	SUB	ST
PPL Renewable Energy LLC.....	IPP	Summit Solar	NJ	56889	GEN 1	1.5	SUN	PV
Public Service Co of Colorado	Electric Utility	Fort St Vrain	CO	6112	5	123.2	NG	CT
Public Service Co of Colorado	Electric Utility	Fort St Vrain	CO	6112	6	123.2	NG	CT
South Houston Green Power LP.....	Industrial	Green Power 2	TX	55470	ST805	215.0	NG	CA
Starwood Power Midway LLC	IPP	Starwood Power Midway LLC	CA	56639	1	51.8	NG	GT
Starwood Power Midway LLC	IPP	Starwood Power Midway LLC	CA	56639	2	51.8	NG	GT
Washington State University	Commercial	Biotech LS 0836	WA	56932	BSL1	1.0	DFO	IC
June								
Big Top LLC.....	IPP	Big Top LLC	OR	56968	1	1.7	WND	WT
Butter Creek Power LLC	IPP	Butter Creek Power LLC	OR	56967	1	5.0	WND	WT
Citizens Thermal Energy	IPP	CC Perry K	IN	992	7	1.6	BIT	ST
Citizens Thermal Energy	IPP	CC Perry K	IN	992	8	1.6	BIT	ST
City of Manassas.....	Electric Utility	Gateway Gen	VA	7798	2	1.8	DFO	IC
Conectiv Atlantic Generatn Inc	IPP	Cumberland	NJ	5083	CUMB2	112.0	NG	GT
El Paso Electric Co	Electric Utility	Newman	TX	3456	5CT1	74.4	NG	CT
El Paso Electric Co	Electric Utility	Newman	TX	3456	5CT2	74.4	NG	CT
FirstLight Power Resources Services LLC.....	IPP	Waterbury Generation	CT	56629	10	81.6	NG	GT
Four Corners Windfarm LLC	IPP	Four Corners Windfarm LLC	OR	56969	1	10.0	WND	WT
Four Mile Canyon Windfarm LLC	IPP	Four Mile Canyon Windfarm LLC	OR	56970	1	10.0	WND	WT
Hawaii Electric Light Co Inc	Electric Utility	Keahole	HI	8083	7	15.5	DFO	CA

Table ES3. New U.S. Electric Generating Units by Operating Company, Plant and Month, 2009
(Continued)

Year/Month/Company	Producer Type	Plant	State	Plant ID	Generating Unit ID	Net Summer Capacity (megawatts) ¹	Energy Source	Prime Mover
New Units 2009								
Hoosier Energy R E C, Inc.....	Electric Utility	Clark-Floyd Landfill Gas Generating	IN	56539	ICG3	1.4	LFG	IC
Iberdrola Renewable Energies USA.....	IPP	Barton Windpower LLC	IA	56765	1	28.0	WND	WT
Iberdrola Renewable Energies USA.....	IPP	Barton Windpower LLC	IA	56765	2	132.0	WND	WT
JEA.....	Electric Utility	J D Kennedy	FL	666	GT38	157.3	NG	GT
Los Angeles City of.....	IPP	Pine Tree Wind Project	CA	56433	1	120.0	WND	WT
NRG Cedar Bayou Development Company LLC.....	IPP	Cedar Bayou 4	TX	56806	4	153.5	NG	CA
NRG Cedar Bayou Development Company LLC.....	IPP	Cedar Bayou 4	TX	56806	41	153.5	NG	CT
NRG Cedar Bayou Development Company LLC.....	IPP	Cedar Bayou 4	TX	56806	42	153.5	NG	CT
Oregon Trail Windfarm LLC.....	IPP	Oregon Trail Windfarm LLC	OR	56971	1	9.9	WND	WT
Pacific Canyon Windfarm LLC.....	IPP	Pacific Canyon Windfarm LLC	OR	56972	1	8.3	WND	WT
Panoche Energy Center, LLC.....	IPP	Panoche Energy Center	CA	56803	1	91.8	NG	GT
Panoche Energy Center, LLC.....	IPP	Panoche Energy Center	CA	56803	3	91.8	NG	GT
Progress Energy Carolinas Inc.....	Electric Utility	Wayne County	NC	7538	5	180.0	NG	GT
Progress Energy Florida Inc.....	Electric Utility	P L Bartow	FL	634	4AGT	178.9	NG	CT
Progress Energy Florida Inc.....	Electric Utility	P L Bartow	FL	634	4BGT	178.9	NG	CT
Progress Energy Florida Inc.....	Electric Utility	P L Bartow	FL	634	4CGT	178.9	NG	CT
Progress Energy Florida Inc.....	Electric Utility	P L Bartow	FL	634	4DGT	178.9	NG	CT
Progress Energy Florida Inc.....	Electric Utility	P L Bartow	FL	634	4ST	362.1	NG	CA
SCE Engineers.....	IPP	Montgomery County Oaks LFG Plant	MD	55885	CAT35	1.6	LFG	IC
SCE Engineers.....	IPP	Montgomery County Oaks LFG Plant	MD	55885	GEJGC	.8	LFG	IC
Sand Ranch Windfarm LLC.....	IPP	Sand Ranch Windfarm LLC	OR	56973	1	9.9	WND	WT
Wagon Trail LLC.....	IPP	Wagon Trail LLC	OR	56974	1	3.3	WND	WT
Ward Butte Windfarm LLC.....	IPP	Ward Butte Windfarm LLC	OR	56975	1	6.6	WND	WT
Western Farmers Elec Coop, Inc.....	Electric Utility	Anadarko Plant	OK	3006	10	38.3	NG	GT
Western Farmers Elec Coop, Inc.....	Electric Utility	Anadarko Plant	OK	3006	11	38.3	NG	GT
Western Farmers Elec Coop, Inc.....	Electric Utility	Anadarko Plant	OK	3006	9	38.3	NG	GT
July								
AMERESCO Keller Canyon LLC.....	IPP	AMERESCO Keller Canyon	CA	56897	1	1.9	LFG	IC
AMERESCO Keller Canyon LLC.....	IPP	AMERESCO Keller Canyon	CA	56897	2	1.9	LFG	IC
Acciona Wind Energy USA LLC.....	IPP	EcoGrove Wind LLC	IL	56805	1	100.5	WND	WT
Braintree Town of.....	Electric Utility	Potter Station 2	MA	1660	WAT1	49.3	NG	GT
Braintree Town of.....	Electric Utility	Potter Station 2	MA	1660	WAT2	49.3	NG	GT
Caithness Long Island, LLC.....	IPP	Caithness Long Island Energy Center	NY	56234	CT01	167.7	NG	CT
Caithness Long Island, LLC.....	IPP	Caithness Long Island Energy Center	NY	56234	ST01	129.0	NG	CA
City of Morganton.....	Commercial	Catawba River Pollution Control	NC	56553	1234	1.3	DFO	IC
Cordova Electric Coop, Inc.....	Electric Utility	Orca	AK	789	7	3.5	DFO	IC
East Texas Electric Coop, Inc.....	Electric Utility	San Jacinto County Peaking Facility	TX	56603	SJC1	72.3	NG	GT
East Texas Electric Coop, Inc.....	Electric Utility	San Jacinto County Peaking Facility	TX	56603	SJC2	72.3	NG	GT
Edison Mission Energy.....	IPP	High Lonesome Wind Ranch LLC	NM	56945	1	100.0	WND	WT
Great River Energy.....	Electric Utility	Elk River	MN	2039	CT	178.5	NG	GT
Hawaiian Electric Co Inc.....	Electric Utility	Campbell Indust. Park Generating Station	HI	56329	CIP1	96.1	OBL	GT
Inadale Wind Farm LLC.....	IPP	Inadale Wind Farm LLC	TX	56984	1	197.0	WND	WT
Inland Empire Energy Ctr LLC.....	IPP	Inland Empire Energy Center	CA	55853	1	332.7	NG	CS
Monterey Regional Waste Mgmt.....	Commercial	Marina Landfill Gas	CA	10748	U4J08	1.4	LFG	IC
Panoche Energy Center, LLC.....	IPP	Panoche Energy Center	CA	56803	2	91.8	NG	GT
Panoche Energy Center, LLC.....	IPP	Panoche Energy Center	CA	56803	4	91.8	NG	GT
Simpson Tacoma Kraft Co LLC.....	Industrial	Simpson Biomass	WA	57099	STG1	59.5	BLQ	ST
Tampa Electric Co.....	Electric Utility	H. L. Culbreath Bayside	FL	7873	3	52.7	NG	GT
Tampa Electric Co.....	Electric Utility	H. L. Culbreath Bayside	FL	7873	4	52.7	NG	GT
Threemile Canyon Wind I LLC.....	IPP	Threemile Canyon Wind I LLC	OR	56933	1	9.9	WND	WT
August								
Connectiv Vineland Solar LLC.....	IPP	Connectiv Vineland Solar LLC	NJ	57081	CVS1	2.3	SUN	PV
Florida Power & Light Co.....	Electric Utility	West County Energy Center	FL	56407	GEN1	256.3	NG	CT
Iberdrola Renewable Energies USA.....	IPP	Dry Lake	AZ	57098	1	63.0	WND	WT
Innovative Energy Systems Inc.....	IPP	Clinton LFGTE Facility	NY	56986	GEN4	1.6	LFG	IC
Omaha Public Power District.....	Electric Utility	Elk City Station	NE	7955	8	.8	LFG	IC
Rail Splitter Wind Farm LLC.....	IPP	Rail Splitter Wind Farm	IL	56856	GEN1	100.5	WND	WT
Rio Grande Valley Sugar Growers, Inc.....	Industrial	Rio Grande Valley Sugar Growers	TX	54338	GEND	14.9	AB	ST
San Diego Gas & Electric Co.....	Electric Utility	Miramar	CA	56232	2	45.1	NG	GT
Tampa Electric Co.....	Electric Utility	Big Bend	FL	645	GT4	52.7	NG	GT
WM Renewable Energy LLC.....	IPP	DFW Gas Recovery	TX	50569	GEN3	1.6	LFG	IC
WM Renewable Energy LLC.....	IPP	DFW Gas Recovery	TX	50569	GEN4	1.6	LFG	IC
WM Renewable Energy LLC.....	IPP	DFW Gas Recovery	TX	50569	GEN5	1.6	LFG	IC

**Table ES3. New U.S. Electric Generating Units by Operating Company, Plant and Month, 2009
(Continued)**

Year/Month/Company	Producer Type	Plant	State	Plant ID	Generating Unit ID	Net Summer Capacity (megawatts) ¹	Energy Source	Prime Mover
New Units 2009								
WM Renewable Energy LLC	IPP	DFW Gas Recovery	TX	50569	GEN6	1.6	LFG	IC
September								
Alaska Electric Light&Power Co	Electric Utility	Lake Dorothy	AK	57085	1	13.6	WAT	HY
E ON Climate Renewables N America Inc	IPP	EC&R Panther Creek Wind Farm III LLC	TX	56979	1	199.5	WND	WT
E ON Climate Renewables N America Inc	IPP	EC&R Papatote Creek I LLC	TX	56983	1	180.0	WND	WT
Milford Wind Corridor Phase I LLC	IPP	Milford Wind Corridor I LLC	UT	57079	1	203.5	WND	WT
Otter Tail Power Co	Electric Utility	Luverne	ND	57031	1	49.5	WND	WT
PacifiCorp	Electric Utility	High Plains	WY	57040	1	99.0	WND	WT
Pfizer Inc	Industrial	Pfizer Groton Plant	CT	54236	GT-1	8.6	NG	CA
Sleepy Eye Public Utility Comm	Electric Utility	Sleepy Eye	MN	2011	6	2.0	DFO	IC
Sleepy Eye Public Utility Comm	Electric Utility	Sleepy Eye	MN	2011	7	2.0	DFO	IC
October								
Blackstone Wind Farm LLC	IPP	Blackstone Wind Farm LLC	IL	57110	GEN 1	102.0	WND	WT
Blue Canyon Windpower V LLC	IPP	Blue Canyon Windpower V LLC	OK	57108	GEN 1	99.0	WND	WT
Calpine Corp	IPP	Otay Mesa Generating Project	CA	55345	1-01	171.1	NG	CT
Calpine Corp	IPP	Otay Mesa Generating Project	CA	55345	1-02	171.1	NG	CT
Calpine Corp	IPP	Otay Mesa Generating Project	CA	55345	1-03	250.0	NG	CA
Duke Energy DEGS Silver Sage Windpwr LLC	IPP	Silver Sage Windpower	WY	57091	SSW01	42.0	WND	WT
Florida Power & Light Co	Electric Utility	Desoto Solar Energy	FL	56929	1	25.0	SUN	PV
Interstate Power and Light Co	Electric Utility	Whispering Willow	IA	56355	1	199.0	WND	WT
Meadow Lake Wind Farm LLC	IPP	Meadow Lake Wind Farm LLC	IN	57109	GEN 1	200.0	WND	WT
Olmsted County Public Works	Commercial	Olmsted Waste Energy	MN	50413	DGCAT	1.7	DFO	IC
Ormat Nevada Inc	IPP	Brawley 1	CA	56832	GE1	15.2	GEO	BT
Ormat Nevada Inc	IPP	Brawley 1	CA	56832	GE2	15.2	GEO	BT
Ormat Nevada Inc	IPP	Brawley 1	CA	56832	GE3	15.2	GEO	BT
Ormat Nevada Inc	IPP	Brawley 1	CA	56832	GE4	15.2	GEO	BT
Ormat Nevada Inc	IPP	OREG 2 Inc	MT	56880	CS12	7.1	GEO	BT
PacifiCorp	Electric Utility	McFadden Ridge	WY	57039	1	28.5	WND	WT
SunEdison Origination1 LLC	IPP	Oxnard (Procter & Gamble)	CA	57008	1	1.0	SUN	PV
TXU Generation Co LP	Commercial	Sandow Station	TX	52071	5	619.8	LIG	ST
WM Renewable Energy LLC	IPP	Chaffee Gas Recovery	NY	56526	GEN7	.8	LFG	IC
WM Renewable Energy LLC	IPP	Chaffee Gas Recovery	NY	56526	GEN8	.8	LFG	IC
Year-to-Date Capacity of New Units	--	--	--	--	--	17,098.3	--	--
Year-to-Date U.S. Capacity²	--	--	--	--	--	1,021,816.7	--	--

¹ Net summer capacity is estimated.

² Preliminary 2009 capacity; based on preliminary 2008 capacity and preliminary 2009 capacity additions and retirements.

Notes: • See Glossary for definitions. • Totals may not equal sum of components because of independent rounding. • Descriptions for the Energy Source and Prime Mover codes listed in the table can be obtained from the Form EIA-860 instructions at the following link: <http://www.eia.doe.gov/cneaf/electricity/forms/eia860/eia860.pdf>
Source: Energy Information Administration, Form EIA-860, "Annual Electric Generator Report" and Form EIA-860M, "Monthly Update to the Annual Electric Generator Report."

Table ES4. Plants Sold and Transferred in 2007, 2008 and 2009

Seller	Plant	State	EIA Plant ID	Net Summer Capacity (Megawatts)		Transaction Closing Date	Buyer
				Plant Total	Sold or Transferred		
Gamesa.....	Mendota Hills	IL	56160	50	50	January 03, 2007	Babcock and Brown
NRG Energy.....	Chowchilla II	CA	56185	47	47	January 03, 2007	Wayzata Investment Partners
NRG Energy.....	Red Bluff	CA	56184	45	45	January 03, 2007	Wayzata Investment Partners
Calpine Corp.....	Aries Power Project	MO	55178	620	620	January 16, 2007	Kelson Holdings
Peoples Energy.....	Elwood	IL	55199	1,350	675	January 17, 2007	J-Power
WPS Energy Services.....	WPS Power Niagara	NY	50202	53	53	January 31, 2007	US Renewables Group
Atlantic City Electric.....	BL England	NJ	2378	447	447	February 09, 2007	Rockland Capital Energy Investments
American Electric Power.....	Oklauinion	TX	127	690	25	February 15, 2007	Brownsville Public Utility Board
Dominion Energy.....	Armstrong	PA	55347	584	584	March 05, 2007	Tenaska and Warburg Pincus
Dominion Energy.....	Pleasants	WV	55349	392	392	March 05, 2007	Tenaska and Warburg Pincus
Dominion Energy.....	Troy	OH	55348	584	584	March 05, 2007	Tenaska and Warburg Pincus
Calpine Corp.....	Goldendale Energy Center	WA	55482	220	220	March 21, 2007	Puget Sound Energy
Consumers Energy.....	Palisades	MI	1715	778	778	April 11, 2007	Entergy
DPL Energy.....	Darby	OH	55247	452	452	April 25, 2007	Columbus Southern Power
DPL Energy.....	Greenville Electric Generating Station	OH	55228	176	176	April 25, 2007	Buckeye Power
Mirant.....	Apex	NV	55514	494	494	May 01, 2007	LS Power
Mirant.....	Bosque	TX	55172	548	548	May 01, 2007	LS Power
Mirant.....	Shady Hills	FL	55414	468	468	May 01, 2007	LS Power
Mirant.....	Sugar Creek	IN	55364	521	521	May 01, 2007	LS Power
Mirant.....	West Georgia	GA	55267	762	762	May 01, 2007	LS Power
Mirant.....	Zealand	MI	55087	770	770	May 01, 2007	LS Power
PSEG.....	Lawrenceburg Energy Center	IN	55502	1,082	1,082	May 17, 2007	AEP
Algonquin Power.....	EKS Landfill	MN	54939	4	4	June 30, 2007	WM Renewable Energy
FirstEnergy.....	Bruce Mansfield	PA	6094	2,460	830	July 13, 2007	AIG Financial Products and Union Bank of California
KeySpan.....	EF Barrett	NY	2511	690	690	August 24, 2007	National Grid
KeySpan.....	East Hampton	NY	2512	24	24	August 24, 2007	National Grid
KeySpan.....	Far Rockaway	NY	2513	111	111	August 24, 2007	National Grid
KeySpan.....	Glenwood	NY	2514	339	339	August 24, 2007	National Grid
KeySpan.....	Holtsville	NY	8007	524	524	August 24, 2007	National Grid
KeySpan.....	Landing	NY	7869	94	94	August 24, 2007	National Grid
KeySpan.....	Montauk	NY	2515	5	5	August 24, 2007	National Grid
KeySpan.....	Northport	NY	2516	1,565	1,565	August 24, 2007	National Grid
KeySpan.....	Port Jefferson	NY	2517	559	559	August 24, 2007	National Grid
KeySpan.....	Ravenswood	NY	2500	2,324	2,324	August 24, 2007	National Grid
KeySpan.....	Shoreham	NY	2518	64	64	August 24, 2007	National Grid
KeySpan.....	South Hampton	NY	2519	7	7	August 24, 2007	National Grid
KeySpan.....	Southold	NY	2520	12	12	August 24, 2007	National Grid
KeySpan.....	Wading River	NY	7146	241	241	August 24, 2007	National Grid
KeySpan.....	West Babylon	NY	2521	49	49	August 24, 2007	National Grid
Calpine.....	Acadia	LA	55173	1,063	532	September 13, 2007	Cajun Gas Energy
American Electric Power.....	Sweeny	TX	55015	480	240	October 01, 2007	ConocoPhillips
Wisconsin Electric Power.....	Point Beach	WI	4046	1,041	1,041	October 01, 2007	FPL Energy LLC
City of Klamath Falls.....	Klamath Cogeneration Plant	OR	55103	470	470	December 05, 2007	PPM Energy
Algonquin Power.....	Colton Landfill	CA	56167	1	1	December 21, 2007	Fortistar
Algonquin Power.....	Mid Valley Landfill	CA	56170	3	3	December 21, 2007	Fortistar
Algonquin Power.....	Milliken Landfill	CA	56171	2	2	December 21, 2007	Fortistar
Algonquin Power.....	Prima Desheha Landfill	CA	55601	5	5	December 21, 2007	Fortistar
Algonquin Power.....	Tajiguas Landfill	CA	55603	3	3	December 21, 2007	Fortistar
Algonquin Power Income Fund.....	Four Hills Nashua Landfill	NH	55006	3	3	December 21, 2007	Fortistar
Duke Energy Indiana.....	Wabash River	IN	1010	950	274	January 01, 2008	Wabash Valley Power Association
Tenaska.....	Commonwealth Chesapeake	VA	55381	312	312	February 15, 2008	Tyr Energy
Dynegy.....	Calcasieu	LA	55165	310	310	April 01, 2008	Entergy Gulf States
Duke Energy.....	Brownsville Peaking Power	TN	55081	450	450	April 11, 2008	TVA
Jersey Central Power & Light.....	Forked River	NJ	7138	66	66	April 17, 2008	Maxim
GE Energy Financial Services.....	Birchwood Power	VA	54304	238	118	May 09, 2008	J-Power
Southaven Operating Services.....	Southaven Power	MS	55269	759	759	May 09, 2008	TVA
SCS Energy.....	Astoria	NY	55375	312	95	May 26, 2008	Suez Energy International
LS Power.....	Sugar Creek Energy	IN	55364	521	521	June 23, 2008	Northern Indiana Public Service
NiSource.....	Whiting Clean Energy	IN	55259	547	547	July 01, 2008	BP Alternative Energy North America
Black Hills.....	Arapahoe Combustion Turbine Project	CO	55200	123	123	July 28, 2008	Hastings Funds Management and IIF
Black Hills.....	Fountain Valley	CO	55453	234	234	July 28, 2008	BH Investment
Black Hills.....	Harbor Cogeneration	CA	50541	102	102	July 28, 2008	Hastings Funds Management and IIF
Black Hills.....	Las Vegas Cogeneration	NV	10761	50	50	July 28, 2008	BH Investment
Black Hills.....	Las Vegas Cogeneration II	NV	55952	220	220	July 28, 2008	Hastings Funds Management and IIF

Table ES4. Plants Sold and Transferred in 2007, 2008 and 2009

Seller	Plant	State	EIA Plant ID	Net Summer Capacity (Megawatts)		Transaction Closing Date	Buyer
				Plant Total	Sold or Transferred		
Black Hills.....	Valmont Combustion Turbine Project	CO	55207	80	80	July 28, 2008	Hastings Funds Management and IIF BH Investment
Sumas Cogeneration	Sumas Power Plant	WA	54476	126	126	July 28, 2008	Puget Sound Energy
Tenaska	Armstrong	PA	55347	584	584	July 30, 2008	International Power
Tenaska	Calumet	IL	50166	329	329	July 30, 2008	International Power
Tenaska	Pleasants	WV	55349	292	292	July 30, 2008	International Power
Tenaska	Troy	OH	55348	584	584	July 30, 2008	International Power
Dynergy	Rolling Hills	OH	55401	825	825	August 01, 2008	Tenaska
Pittsfield Generating Company.....	Pittsfield Generating	MA	50002	141	141	August 06, 2008	Maxim
National Grid.....	Ravenswood	NY	2500	2,318	2,318	August 26, 2008	TransCanada
Suez Energy North America	Chehalis Generating Facility	WA	55662	495	495	September 16, 2008	PacifiCorp
Kelson Hodings.....	Redbud	OK	55463	1,144	1,144	September 29, 2008	Oklahoma Gas & Electric
Reliant	Bighorn Generating Station	NV	55687	570	570	October 20, 2008	Nevada Power
Wayzata Opportunities Fund	Mint Farm	WA	55700	306	306	December 05, 2008	Puget Sound Energy
Mach Gen LLC	Covert Generating Project	MI	55297	1,058	1,058	December 13, 2008	Tenaska
GE Energy Services	Fox Energy Center	WI	56031	600	300	December 23, 2008	Tyr Energy
Black Hills.....	Wygen 1	WY	55479	70	16	January 22, 2009	Municipal Energy Agency of Nebraska
GreenHunter Renewable Power....	Telogia Power Plant	FL	50774	14	14	February 12, 2009	Multitrade Telogia
Dynergy	Hearld County Power	GA	55141	492	492	May 01, 2009	Oglethorpe Power Corporation
US Bank National Association	Midland Cogeneration	MI	10745	1,837	1,837	May 27, 2009	Midland Cogeneration Venture
Hartwell Energy Limited Partnership.....	Hartwell Energy LP	GA	54538	300	300	October 13, 2009	Oglethorpe Power Corporation
Dynergy	Bluegrass	KY	55164	495	495	December 01, 2009	LS Power
Dynergy	Bridgeport Energy Project	CT	55042	454	454	December 01, 2009	LS Power
Dynergy	Dynergy Arlington Valley Energy Facility	AZ	55282	580	580	December 01, 2009	LS Power
Dynergy	Griffith Energy LLC	AZ	55124	570	570	December 01, 2009	LS Power
Dynergy	Renaissance	MI	55402	660	660	December 01, 2009	LS Power
Dynergy	Riverside	KY	55198	825	825	December 01, 2009	LS Power
Dynergy	Rocky Road	IL	55109	340	340	December 01, 2009	LS Power
Dynergy	Tilton	IL	7760	176	176	December 01, 2009	LS Power
Babcock & Brown.....	Butler Ridge	WI	50123	54	54	December 16, 2009	NextEra Energy Resources
Babcock & Brown.....	Majestic 1	TX	56648	80	80	December 16, 2009	NextEra Energy Resources
Babcock & Brown.....	Wessington Springs	SD	56650	51	51	December 16, 2009	NextEra Energy Resources

Notes: • The "Transaction Closing Date" is estimated based on press reports and Security and Exchange Commission filings. • The "Capacity Sold or Transferred" values are based on a combination of capacity data in the EIA-860 data files, press reports and Security and Exchange Commission filings, and may not exactly match transaction values shown in other sources. • A power plant may appear more than once on this list due to involvement in multiple transactions, such as the sale of different shares of the plant at different points in time. • Values for 2007 are final. Values for 2008 and 2009 are preliminary. Final data for the year are to be released in the Form EIA-860 annual databases.

Source: Press reports; filings with the Security and Exchange Commission; Energy Information Administration, Form EIA-860 "Annual Electric Generator Report" data files.